

80 t CRAWLER CRANE



 186 kW

 80 t

 59.7 m

 **MAX** CAB

Stage V

80 t crawler crane 2200G

The 2200 G is a flexible all-rounder for many areas of application that impresses with ample power reserves, excellent availability and easy transportability.

Thanks to its 80 t lifting capacity, the crawler crane is a versatile helper, especially for the prefabricated construction industry. Quickly mounted, it performs all lifting, transporting and assembly tasks on the construction site. Its sensitive control allows components to be assembled with millimeter precision. It can also be used without any problems in special civil engineering and hydraulic engineering, where it can be equipped with a vibratory hammer or leader.

Reliable and durable:

The G series is characterized by robust components and an intelligent machine design according to state-of-the-art technological standards: high value retention, even with demanding continuous operation.

Flexible in use

Low space requirement combined with strong undercarriage traction for excellent off-road mobility - ideal for pick and carry applications. Benefit from the modular machine concept, tailored to your specific application.

Maintenance & service

This is made easy with standard components and easy-to-access maintenance and service points.

On site and ready to use fast

A small transport width and transport weight guarantee a cost-effective transport. Mounted on site in just a few steps thanks to the innovative SENNEBOGEN self-assembly system.

Maximum operator comfort and safety

The spacious Maxcab comfort cab offers maximum operator comfort for a relaxed and productive workday. This is complemented by stability and safety through a robust steel construction and durable mechanics, sensitive controls and numerous safety features.

The 80 t crawler crane 2200 G Series

Advanced. The **G** Series



LONG SERVICE LIFE, HIGH VALUE RETENTION

- Reliable and powerful thanks to its robust construction and high-quality components
- Temperaturecontrolled cooling system designed and tested for heavy-duty applications and high ambient temperatures

SOPHISTICATED, STATE-OF-THE-ART TECHNOLOGY

- In the 6th Generation – decades of experience in designing and constructing crawler cranes

SIMPLE TO MAINTAIN AND SERVICE

- Technology that can be mastered and no over-engineering, easy access to all components

ENVIRONMENTALLY-FRIENDLY DRIVE TECHNOLOGY

- State-of-the-art engine, drive and emission systems in line with the latest technology standards (stage V)
- Large-scale pipes and valves for maximum efficiency

ECONOMICAL TRANSPORTATION THANKS TO COMPACT DIMENSIONS

It is not just with procurement and operating costs that companies can make cost-effective decisions and savings. Astute contractors know that simple and economical transportation between construction sites is an important factor, too.

MONEY SAVED – ASSEMBLE WITHOUT ADDITIONAL EQUIPMENT AND WITH LESS PERSONNEL

TIME AND COST EFFICIENT

Assembled on site in just a few steps, thanks to the innovative ballast deposit system.



Cost-efficient

All attachments and lattice boom segments are optimized for container transport



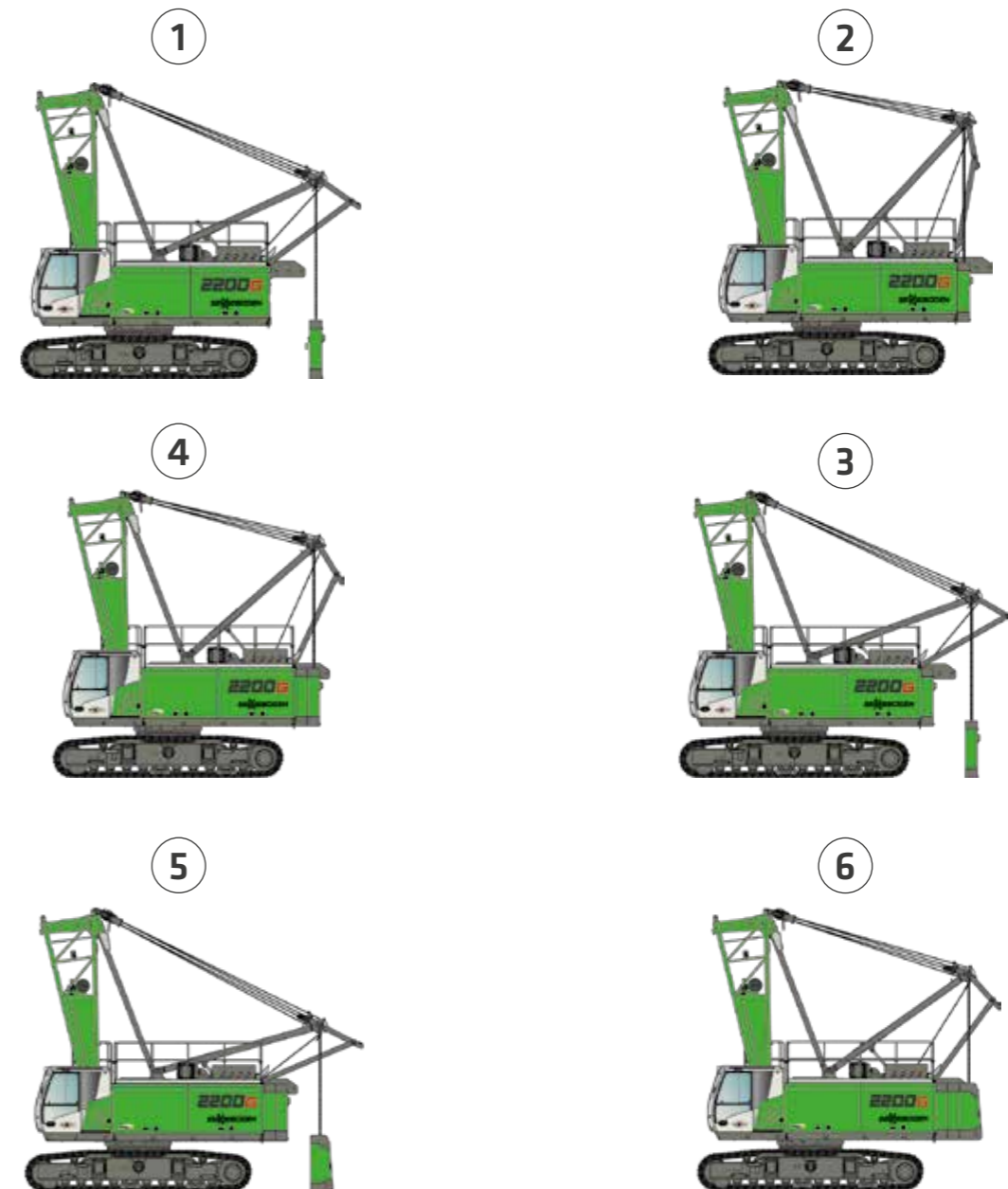
Compact

Transport width of base machine 3.50 m



Quick

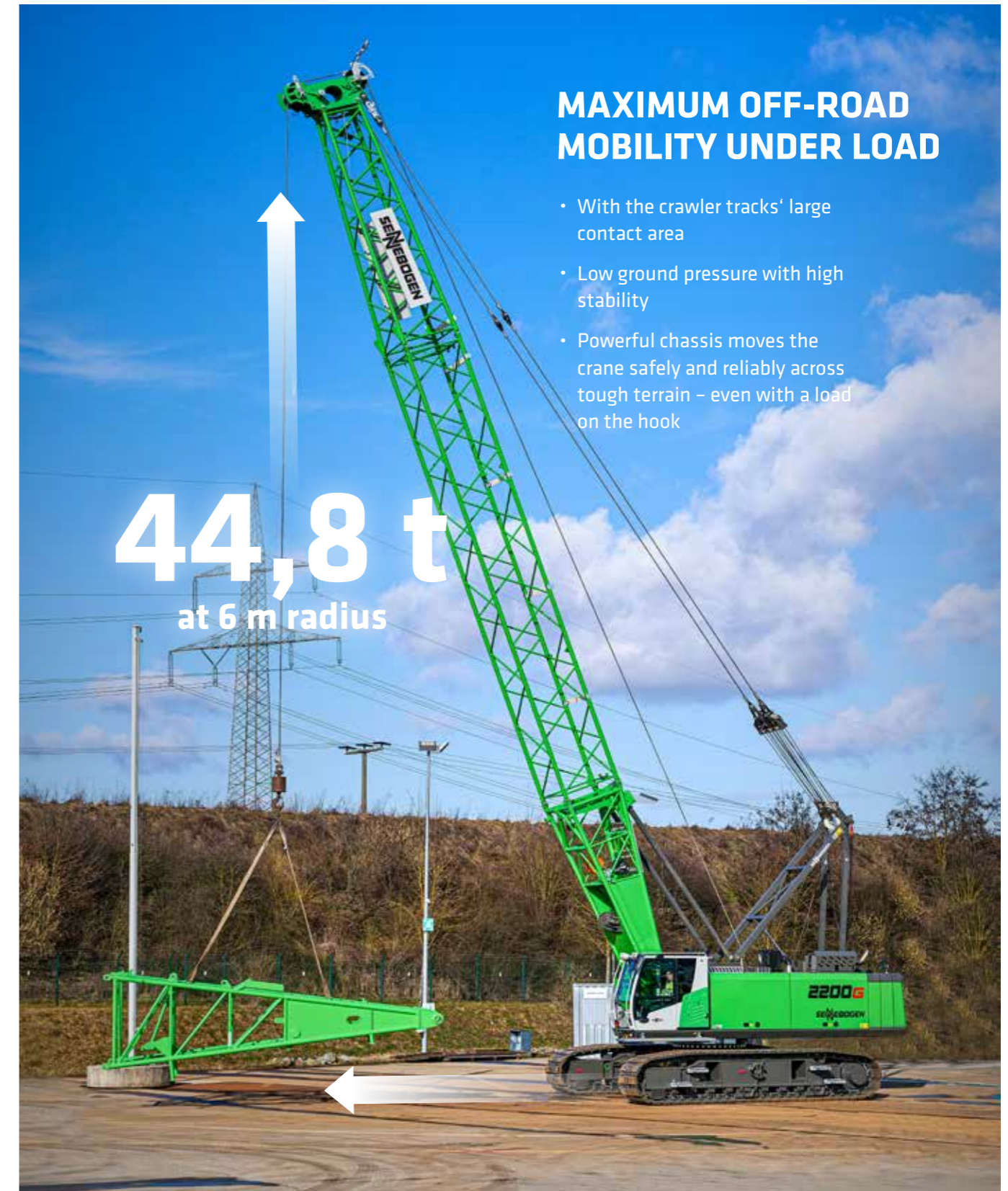
Innovative ballast deposit system: The machine is ready for use on site in a short time



ROBUST: SAFE LIFTING ON INCLINES



FLEXIBEL: MOVE LOADS HORIZONTALLY & VERTICALLY



MAINTENANCE AND SERVICE MADE EASY



Sophisticated, state-of-the-art technology

KEEP IT SIMPLE. TECHNOLOGY THAT CAN BE MASTERED.

All service points are clearly arranged and easily accessible. The clear labeling of components makes finding your way around easy.



Reliable and practical technology makes life easier. We rely on hydraulics, electrics and electronics only where they provide the greatest benefit.

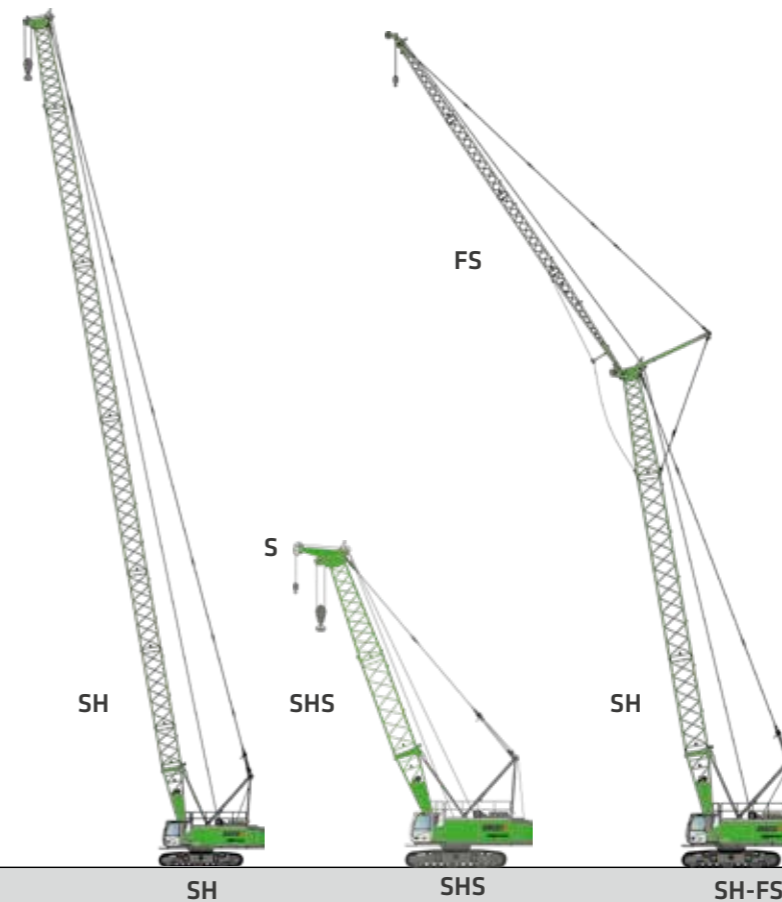


We make you happy, not reliant. With cost-effective components and fewer process steps, you can take care of the machine on your own.



At the central electrical distribution board, clearly arranged standard components simplify control and troubleshooting.

MODULAR DESIGN – VERSATILE SOLUTIONS



SH: Heavy main boom FS: Fixed jib S: Auxiliary jib

SPECIAL REQUIREMENTS? WE HAVE THE SOLUTION.

Tailored to your application, we realize the machine that suits you best. According to the tried and tested SENNEBOGEN modular system, the lattice boom can be variably designed from 12.1 m to 59.7 meters.

What's more, the crane is suitable for clamshell operation.



BETTER SAFETY. MAXIMUM COMFORT.



Everything in view

Excellent all-round and upward view thanks to large window panes, optionally with FOPS guard and bullet proof glass. The optionally available cab tilt of up to 20° enables direct eye contact with the load – for precise lifting work, even when working higher up. High-quality LED headlights and the standardized camera monitoring of the rear area and to the right side let you keep an excellent eye on all obstacles.

Intuitive controls

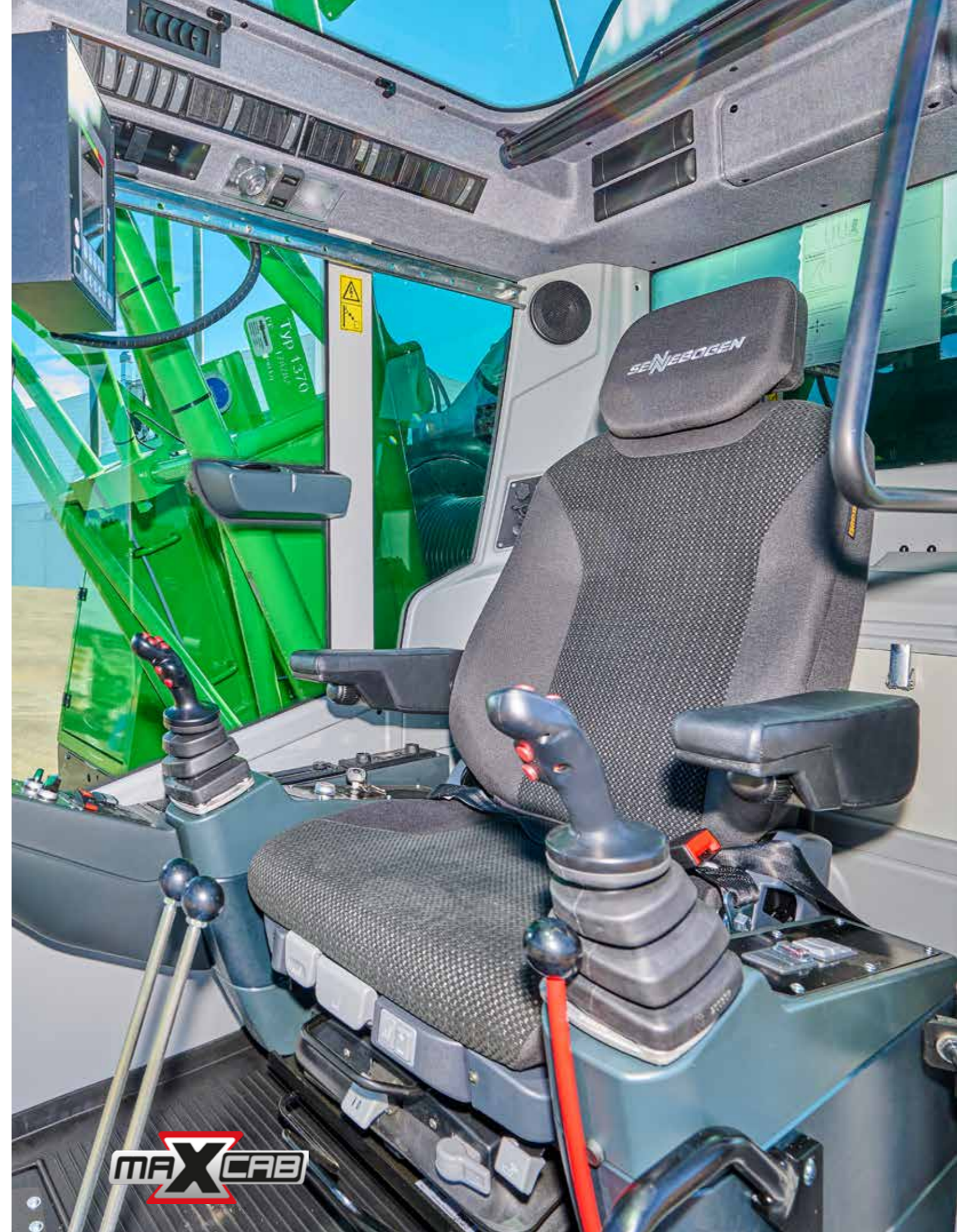
The intuitive SENCON control system shows all relevant information and possibilities for action and thus actively supports you in your work with the machine. Short paths for direct, sensitive control of all functions as well as ease of operation thanks to optimized design of the buttons and switches.

Ergonomical – for your health

Operators spend many hours at their workplace. The back-friendly comfort seat, adjustable armrests, joysticks that sit comfortably in the hand, and the optimally arranged controls make daily work as easy as possible. Safe and comfortable access due to the tried-and-tested sliding doors incl. sliding window.

Pleasant indoor climate

Whether in warmer climates or sub-zero temperatures: The automatic heating/air conditioning with optimum air flow guarantees a pleasant indoor climate all year round. Noise reduction through sound-absorbing materials and design solutions – so that you can concentrate on what's important.



TECHNICAL DATA, EQUIPMENT

MACHINE TYPE

MODEL (TYPE) 2200 Crawler

ENGINE

TYPE

Stage V:

Cummins B 6.7 FR95885
Rated power: 168 kW/2200 rpm
Operating point standard: 188 kW/1800 rpm
Operating point ECO: 185 kW / 1650 rpm

Stage IIIa:

Cummins QSB 6.7 FR96045
Rated power: 164 kW/2000 rpm
Operating point standard: 171 kW/1800 rpm
Operating point ECO: 161 kW / 1650 rpm

both:
direct injection, turbocharged, charge air cooling, reduced emissions

Idle / Stop Automatic

COOLING	Water-cooled
DIESEL FILTER	With water separator and heater
AIR FILTER	Dry filter with integrated pre-separator, automatic dust discharge, main element and safety element, contamination indicator
FUEL TANK	650 l
AD BLUE TANK	45 l
ELECTRICAL SYSTEM	24 V
BATTERIES	2 x 150 Ah
OPTION	Electric fuel pump



UPPERCARRIAGE

DESIGN	Torsion-resistant box design, precision crafted, bronze bushings for boom bearing arrangement, service-friendly concept, engine installed in the longitudinal direction
ELECTRICAL SYSTEM	Central electrical distributor, battery disconnect switch
LIGHTING	LED headlights for optimal lighting of the work area
COOLING SYSTEM	3-circuit cooling system with high cooling output, electrically regulated fan drive for cooling water, charged air and oil
SAFETY	Camera monitoring of the area to the rear and the right side
OPTIONS	<ul style="list-style-type: none"> Additional cameras Sea climate resistant coating as corrosion protection Customized paint finish Low temperature package Autom. central lubrication for equipment and live ring track Pinion tooth lubrication Ballast deposit system 2 LED strobe lights at the rear Uppercarriage railing (right and left side)



TECHNICAL DATA, EQUIPMENT

HYDRAULIC SYSTEM / HYDRAULICS

Multi-circuit hydraulic system for optimal function and capacity. Load-sensing/ LUDV hydraulic system, pressure cut-off, load limit control, variable displacement piston pumps with individual control and energy-saving demand flow control. All movements can be run simultaneously.

DELIVERY RATE	up to 800 l / min
OPERATING PRESSURE	up to 330 bar
FILTRATION	High-performance filtration with long change interval
HYDRAULIC TANK	max. 650 l
CONTROL SYSTEM	Proportional, precision hydraulic control of the movements, 2 servo joysticks for work functions, additional functions via switches and foot pedals – arranged clearly and ergonomically. High energy efficiency due to large-dimension hydraulic valves and lines. Measuring connections in the hydraulic circuits.
SAFETY	Hydraulic circuits with safety valves
OPTIONS	<ul style="list-style-type: none"> Bio-oil filling SENNEBOGEN HydroClean micro-filter system (3 µm) with water separator Hydraulic tank preheating

SLEWING DRIVE

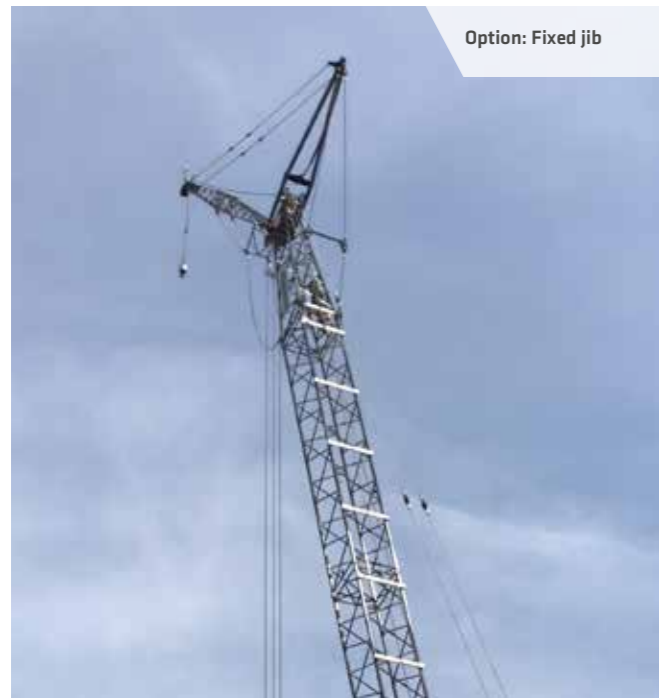
GEARS	Compact planetary gear with bent-axis hydraulic engine, integrated brake valves
SLEW BRAKE	Spring-loaded multi-disk brake
SLEWING RING	Large-scale, externally geared 1-row slewing ring
SLEWING SPEED	0-4 rpm, three adjustable rotation speeds

CAB

CAB TYPE	Maxcab
CAB FEATURES	Comfortable operator cab with sliding door incl. sliding window, vibration damper, tinted safety glass, opening windshield, skylight, front and rear windshield wipers, 12 V/ 24 V connections, 2 headlights integrated into the front of the roof. Air-sprung comfort operator's seat with seat heating and headrest. Sunblind for skylight. Slew brake via foot pedal.
OPTIONS	<ul style="list-style-type: none"> Cab can be tilted 20° Hydraulically elevating cab type E270, can elevate up to 2.70 m and tilt by 20°, including grating next to cab with railing (screwed) Low temperature package Auxiliary heating system with timer Activated-carbon filter for cab Bullet proof windshield Bullet proof skylight Sunblind for windshield Protective roof grating FOPS protective roof grating Protective guards on the front Radio with USB and SD connections, MP3 and Bluetooth® functions



TECHNICAL DATA, EQUIPMENT



Option: Fixed jib

EQUIPMENT

BOOM	Boom length SH 12.1 – 59.7 m
DESIGN	Decades of experience and the latest computer simulations guarantee the greatest degree of stability and life-span
CRANE SAFETY	Latest generation of load moment monitoring with event recorder, clear operations panel showing all important data via the SENCON display, lifting limit switch, cable exit protection, pressure relief valves and pipe fracture protection
OPTIONS	Auxiliary jib: 8.5 t load capacity, 1-strand Fixed jib up to 18m Programmable working limit



Option: Anemometer combined with flight warning light

WINCH

The winches are driven via high-pressure-regulated adjustable hydraulic engines, so there is always optimal pulling force speed control. Hydraulic lowering brake valves for sensitive, wear-free braking. Strong oil bath planetary gears, low-maintenance. Holding brakes are spring-loaded, maintenance-free, low-wear disc brakes running in the oil bath, oil-cooled

MAIN WINCH	120 kN tensile force (1st position), cable speed 0-125 m/min. (1st position), cable diameter 22 mm, usable cable length 220 m
BOOM ADJUSTMENT WINCH	Drive via bent-axis hydraulic engine with compact planetary gearbox, 52 kN tensile force, adjustment speed from 30° to 80° in approx. 40 seconds, cable diameter 14 mm
SAFETY BRAKE	Spring-loaded multi-disk brake
OPTION	2nd crane winch: 120kN tensile force (1st position), cable speed 0-125m/min. (1st position), cable diameter 22 mm, usable cable length 220 m

TECHNICAL DATA, EQUIPMENT

UNDERCARRIAGE

DESIGN	Crawler undercarriage with hydraulically adjustable track width. Stable welded design
DRIVE	Travel drive with axial piston hydraulic engine, directly attached automatically functioning brake valve and compact planetary gears on each running gear side, protected drive transmission
PARKING BRAKE	Spring-loaded multi-disk brake
TRAVELING GEAR	Maintenance-free tractor traveling gear with hydraulic track tension. Crawler with 800 mm triple grouser shoes
SPEED	0 - 1.9 km/h
OPTION	900 mm flat track shoes (transport width 3500 mm)

OPERATING WEIGHT

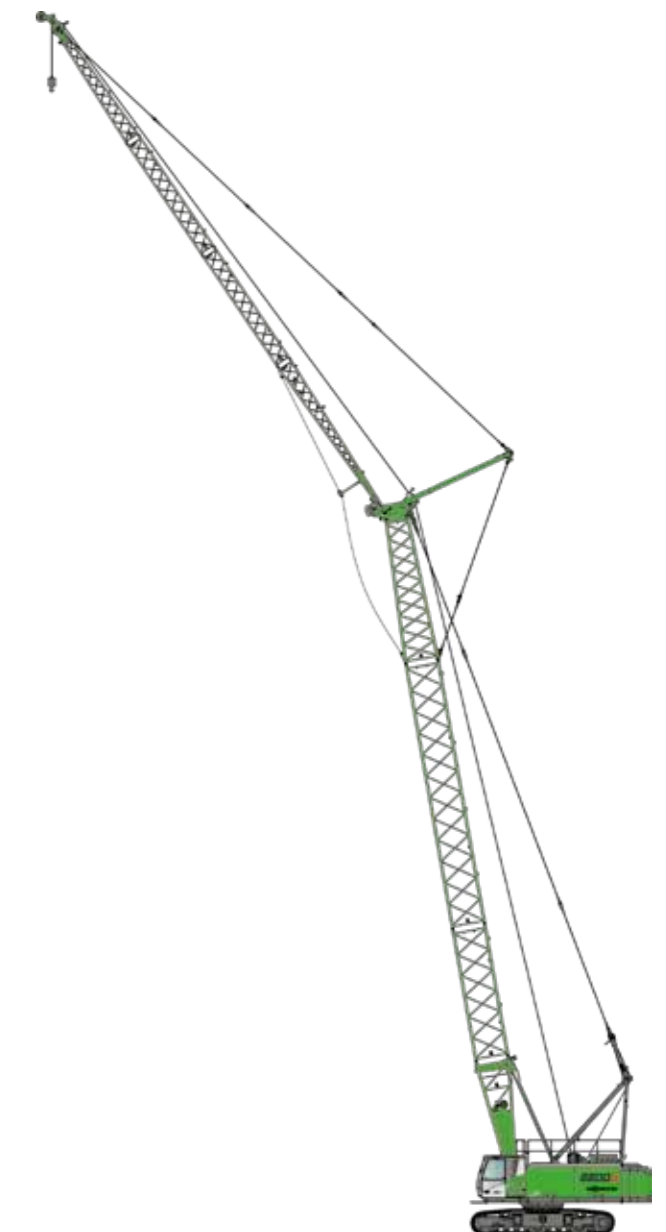
MASS	Approx. 70,000 kg with 12.1 m main boom, 25 t counterweight, 60 t bottom hook block, 800 mm triple grouser shoes, 200 m hoist cable, 2 x 120 kN hoist winches
------	---

NOTE The operating weight varies with the equipment.

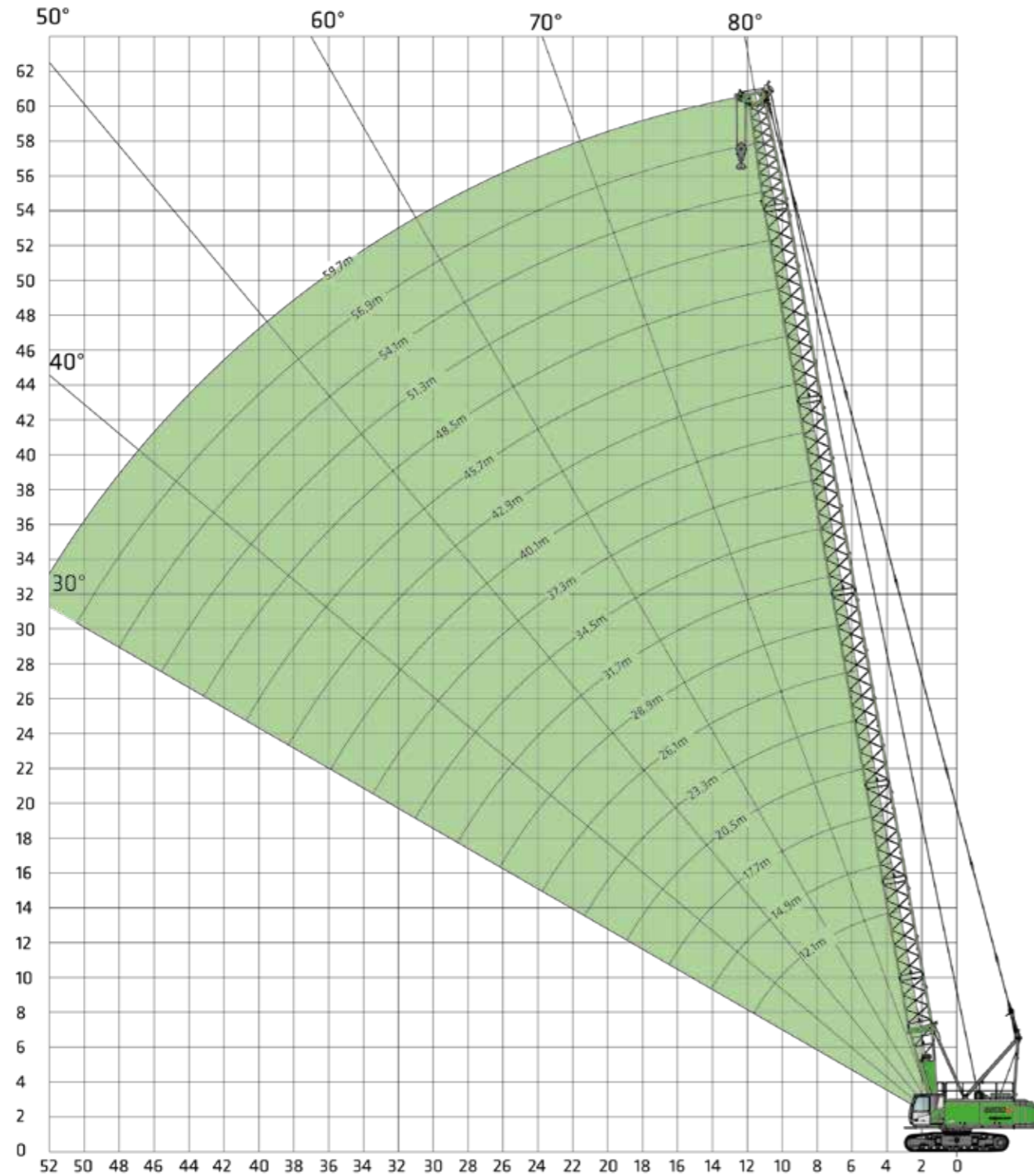
Subject to technical changes.



Option: LMI with optional winch monitoring



CRANE EQUIPMENT



LOAD RATINGS



RADIUS [m]	BOOM LENGTH [m]																	
	12.1	14.9	17.7	20.5	23.3	26.1	28.9	31.7	34.5	37.3	40.1	42.9	45.7	48.5	51.3	54.1	56.9	59.7
4.0	80.0	60.0 / 4.6																
5.0	64.0	60.0	58.2	45.0 / 5.6														
6.0	49.5	47.6	46.7	44.8	43.0	37.9 / 6.5												
7.0	38.8	38.8	38.7	37.2	36.1	35.0	33.9	30.4 / 7.5										
8.0	31.8	31.8	31.7	31.6	31.1	30.0	29.3	28.4	26.3	25.5 / 8.4								
9.0	26.9	26.8	26.8	26.7	26.6	26.5	25.8	25.0	24.2	23.6	22.2	21.4 / 9.4	19.0 / 9.9					
10.0	23.3	23.2	23.1	23.0	22.9	22.8	22.8	22.3	21.7	21.1	20.6	20.0	19.0	18.2 / 10.4	17.1 / 10.8			
11.0	20.4	20.3	20.3	20.2	20.0	19.9	20.0	19.8	19.5	19.0	18.6	18.1	17.6	17.1	16.7	15.9 / 11.3	14.7 / 11.8	
12.0	18.2	18.1	18.0	17.9	17.8	17.7	17.7	17.6	17.4	17.3	16.9	16.5	16.0	15.6	15.2	14.9	14.5	13.7 / 12.3
13.0	18.1 / 12.1	16.2	16.2	16.0	15.9	15.8	15.8	15.7	15.6	15.4	15.4	15.1	14.7	14.3	14.0	13.6	13.2	12.9
14.0		14.7	14.6	14.5	14.4	14.3	14.3	14.2	14.0	13.9	13.9	13.8	13.5	13.1	12.8	12.5	12.2	11.9
15.0		14.5	13.3	13.2	13.1	13.0	13.0	12.9	12.7	12.6	12.6	12.5	12.3	12.1	11.8	11.5	11.2	11.0
16.0			12.2	12.1	12.0	11.9	11.9	11.7	11.6	11.5	11.5	11.3	11.2	11.1	11.0	10.7	10.4	10.1
17.0			11.4 / 16.9	11.2	11.0	10.9	10.9	10.8	10.7	10.5	10.5	10.4	10.3	10.1	10.0	9.9	9.6	9.4
18.0				10.3	10.2	10.1	10.1	9.9	9.8	9.7	9.7	9.5	9.4	9.3	9.2	9.2	9.0	8.7
19.0				9.6	9.5	9.3	9.3	9.2	9.1	8.9	8.9	8.8	8.7	8.5	8.4	8.4	8.3	8.1
20.0				9.4 / 19.3	8.8	8.7	8.7	8.5	8.4	8.3	8.3	8.1	8.0	7.9	7.8	7.7	7.6	7.5
22.0					7.8 / 21.8	7.6	7.6	7.4	7.3	7.1	7.1	7.0	6.9	6.7	6.7	6.6	6.5	6.4
24.0						6.7	6.7	6.5	6.4	6.2	6.2	6.1	6.0	5.8	5.7	5.7	5.6	5.4
26.0						6.6 / 24.2	5.9	5.8	5.6	5.5	5.5	5.3	5.2	5.1	5.0	4.9	4.8	4.7
28.0							5.7 / 26.6	5.2	5.0	4.9	4.8	4.7	4.6	4.4	4.3	4.3	4.2	4.0
30.0								4.9 / 29.0	4.5	4.3	4.3	4.2	4.0	3.9	3.8	3.7	3.6	3.5
32.0									4.1 / 31.5	3.9	3.8	3.7	3.5	3.4	3.3	3.3	3.1	3.0
34.0										3.5 / 33.9	3.4	3.3	3.1	3.0	2.9	2.8	2.7	2.6
36.0											3.1	2.9	2.8	2.6	2.5	2.5	2.3	2.2
38.0											3.0 / 36.3	2.6	2.5	2.3	2.2	2.2	2.0	1.9
40.0												2.5 / 38.7	2.2	2.0	1.9	1.9	1.7	1.6
42.0													2.0 / 41.2	1.8	1.7	1.6	1.5	1.3
44.0														1.6 / 43.6	1.5	1.4	1.2	1.1
46.0															1.3	1.2	1.0	0.9
48.0																1.0	0.8	0.7
50.0																0.9 / 48.4	0.7	0.5
52.0																	0.6 / 50.9	
Number of falls	10	8	7	6	6	5	4	4	4	4	3	3	3	3	3	2	2	2

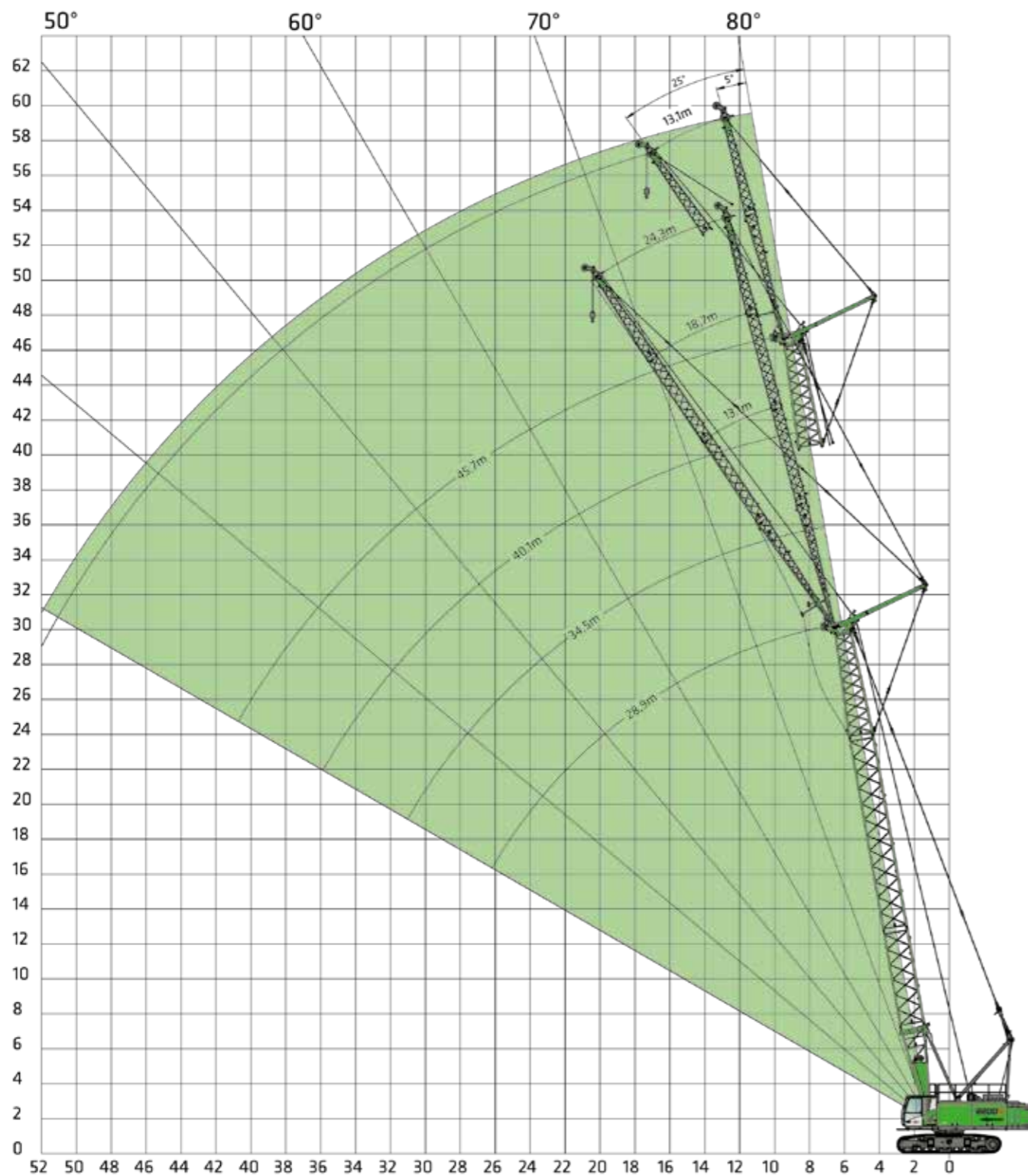
Tab. no.: 2200R-80/2177/25.0/0912 SH

- Notes:**
- The specified load ratings apply when the machine is on a firm and level surface.
 - The load ratings are given in tonnes and apply 360 degrees.
 - The load ratings take standards ISO 4305 Tab. 1+2 as well as the tilt angle method (tilt angle 4°) into account.
 - The weight of the load handling equipment (hooks, cable) should be deducted from the load ratings.
 - The load ratings apply for the maximum undercarriage track width of 4200 mm.
 - Load ratings must be limited or reduced in adverse conditions such as soft or uneven ground, slopes, wind, side loads, swinging loads, jolts or sudden stopping of loads, personnel and operators not experienced in handling loads.
 - Permissible cable pull per strand in crane mode for cable diameter 22 mm - 8.500 kg
 - Load ratings apply for the SH boom (boom assembly in accordance with the operating manual)
 - Load ratings apply for optimum boom assembly and a pulley head with plastic pulleys.
 - The specified load ratings are for orientation purposes only. Please refer to the operating instructions for the valid load ratings in each case.

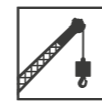
CRANE EQUIPMENT



MAIN BOOM SH WITH FIXED JIB FS SHFS



LOAD RATINGS



MAIN BOOM SHFS



BALLAST 25 t




RADIUS [m]	MAIN BOOM LENGTH [m]																				
	28.9				34.5				40.1				45.7								
	JIB LENGTH [m]																				
Differential angle jib	13.1		18.7		24.3		13.1		18.7		24.3		13.1		18.7		24.3		13.1		
	5°	25°	5°	25°	5°	25°	5°	25°	5°	25°	5°	25°	5°	25°	5°	25°	5°	25°	5°	25°	
10.0	17.0																				
11.0	17.0		11.5/11.4				16.6														
12.0	16.0		11.5		7.0/12.9		15.1		11.2/12.4				12.9						10.3/12.9		
13.0	14.7		11.4		7.0		13.8		11.2		6.8/13.8		12.6		10.2/13.4				10.3		
14.0	13.5	13.3/14.1	11.3		6.9		12.7		11.1		6.8		12.2		10.2		6.6/14.8		10.0		
15.0	12.4	13.3	11.2		6.8		11.7	12.6	11.0		6.7		11.2		9.9		6.6		9.8		
16.0	11.5	12.3	11.1		6.7		10.8	11.7	10.8		6.6		10.4	11.1	9.7		6.6		9.6		
17.0	10.5	11.4	10.5	10.5/17.3	6.7		10.0	10.9	10.0		6.6		9.7	10.3	9.3		6.5		9.0	8.8	
18.0	9.7	10.5	9.8	10.2	6.6		9.3	10.1	9.3	8.9/18.3	6.5		9.0	9.6	8.8		6.4		8.4	8.6	
19.0	9.0	9.7	9.0	9.7	6.6		8.7	9.4	8.7	8.9	6.5		8.4	9.0	8.3	8.5/19.2	6.3		7.9	8.2	
20.0	8.3	9.0	8.4	9.4	6.5	6.1/20.5	8.0	8.8	8.1	8.9	6.4	6.0/21.5	7.8	8.4	7.7	8.5	6.3		7.3	7.9	
22.0	7.2	7.8	7.2	8.1	6.3	6.1	6.9	7.6	7.0	7.9	6.3	6.0	6.7	7.4	6.7	7.5	6.2	5.8/22.4	6.4	6.9	
24.0	6.3	6.8	6.3	7.1	6.0	6.0	6.0	6.6	6.0	6.9	6.1	5.9	5.7	6.4	5.8	6.6	5.8	5.8	5.5	6.1	
26.0	5.5	5.9	5.6	6.3	5.7	5.9	5.2	5.7	5.3	6.1	5.4	5.8	5.0	5.5	5.0	6.0	5.1	5.7	4.7	5.3	
28.0	4.9	5.2	4.9	5.5	5.0	5.8	4.6	5.0	4.6	5.3	4.8	5.6	4.3	4.8	4.4	5.3	4.5	5.3	4.1	4.6	
30.0	4.3	4.7	4.4	4.9	4.5	5.2	4.0	4.4	4.1	4.7	4.2	5.0	3.8	4.2	3.8	4.6	4.0	4.7	3.5	4.0	
32.0	3.8	4.1	3.9	4.4	4.0	4.6	3.5	3.9	3.6	4.2	3.7	4.4	3.3	3.7	3.3	4.1	3.5	4.2	3.0	3.5	
34.0	3.4	3.7	3.5	3.9	3.6	4.2	3.1	3.4	3.2	3.7	3.3	4.1	2.9	3.2	2.9	3.6	3.1	3.8	2.6	3.0	
36.0	3.1	3.3	3.1	3.5	3.2	3.7	2.8	3.0	2.8	3.3	2.9	3.6	2.5	2.8	2.6	3.2	2.7	3.5	2.2	2.6	
38.0	2.7	2.9	2.8	3.1	2.9	3.4	2.4	2.7	2.5	2.9	2.6	3.2	2.2	2.5	2.2	2.8	2.3	3.1	1.9	2.2	
40.0	2.7/38.1	2.7/39.2	2.5	2.8	2.6	3.1	2.2	2.4	2.2	2.6	2.3	2.9	1.9	2.2	1.9	2.5	2.0	2.7	1.6	1.9	
42.0			2.2	2.5	2.3	2.7	1.9	2.1	1.9	2.3	2.0	2.5	1.6	1.9	1.7	2.2	1.8	2.4	1.4	1.6	
44.0			2.1/43.1	2.2	2.1	2.4	1.8/42.9	1.8	1.7	2.0	1.8	2.3	1.4	1.6	1.4	1.9	1.5	2.1	1.1	1.4	
46.0				2.1/44.8	1.8	2.2		1.8/44.1	1.5	1.7	1.6	2.0	1.2	1.4	1.2	1.6	1.3	1.8	0.9	1.1	
48.0					1.6	1.9			1.3	1.5	1.4	1.7	1.0/47.8	1.1	1.0	1.4	1.1	1.6	0.7	0.9	
50.0					1.6/48.2	1.7				1.3/49.7	1.2	1.5		1.0/49.0	0.8	1.2	0.9	1.3	0.5	0.7	
52.0						1.6/50.4					1.0	1.3			0.7	1.0	0.8	1.1		0.5	
54.0											0.9/53.1	1.1			0.6/52.8	0.8	0.6	0.9			
56.0												0.9/55.3			0.7/54.5			0.7			
58.0																		0.6			
Number of falls	2	2	2	2	1	1	2	2	2	2	1	1	2	2	2	1	1	1	2	2	

Tab. no. 2200R-80/2177/25.0/09.12 SHFS 5
Tab. no. 2200R-80/2177/25.0/09.12 SHFS 25

BOOM CONFIGURATION

MAIN BOOM SH



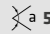
		BOOM ASSEMBLY																	
BOOM LENGTH [m]		12,1	14,9	17,7	20,5	23,3	26,1	28,9	31,7	34,5	37,3	40,1	42,9	45,7	48,5	51,3	54,1	56,9	59,7
LOWER BOOM SECTION	5.5 m	1	1	1	1	1	1	1	1	1	1	1	1	1	1	1	1	1	1
BOOM SECTION	2.8 m		1		1		1		1		1		1		1		1		1
BOOM SECTION	5.6 m			1	1	2	2	1	1	2	2	1	1	2	2	3	3	2	2
BOOM SECTION	11.2 m							1	1	1	1	2	2	2	2	2	3	3	3
UPPER BOOM SECTION	6.1 m	1	1	1	1	1	1	1	1	1	1	1	1	1	1	1	1	1	1
HEADPIECE	0.5 t	1	1	1	1	1	1	1	1	1	1	1	1	1	1	1	1	1	1

Boom configurations as shown can be dismantled in steps of 5.6 m. There is also the option to dismantle all boom combinations in steps of 2.8 m, if you use an additional boom section of 2.8 m for boom configurations marked with .

JIB ASSEMBLY

LÄNGE [m]		13,1	18,7	24,3
FUSSSTÜCK	7,5 m	1	1	1
ZWISCHENSTÜCK	5,6 m		1	2
KOPFSTÜCK	5,6 m	1	1	1

MAIN BOOM - JIB COMBINATION

		MAIN BOOM LENGTH [m]			
JIB [m]		28.9	34.5	40.1	45.7
LENGTH	13.1 m  5/25	x	x	x	x
LENGTH	18.7 m  5/25	x	x	x	
LENGTH	24.3 m  5/25	x	x	x	

X = possible configuration

HOOKS



For 120 kN winches with a cable diameter of 22 mm


CAPACITY	WEIGHT	NUMBER OF FALLS AND MAXIMUM LOAD CAPACITY [kg]																			
		10	9	8	7	6	5	4	3	2	1										
10 t	200 kg																			8,500 kg	
25 t 1-pulley	450 kg																		25,000 kg	17,000 kg	8,500 kg
40 t 2-pulley	500 kg														40,000 kg	34,000 kg	25,500 kg	17,000 kg	8,500 kg		
60 t 3-pulley	650 kg								59,500 kg	51,000 kg	42,500 kg	34,000 kg	25,500 kg	17,000 kg	8,500 kg						
80 t 5-pulley	700 kg	80,000 kg	76,500 kg	68,000 kg	59,500 kg	51,000 kg	42,500 kg	34,000 kg	25,500 kg	17,000 kg	8,500 kg										

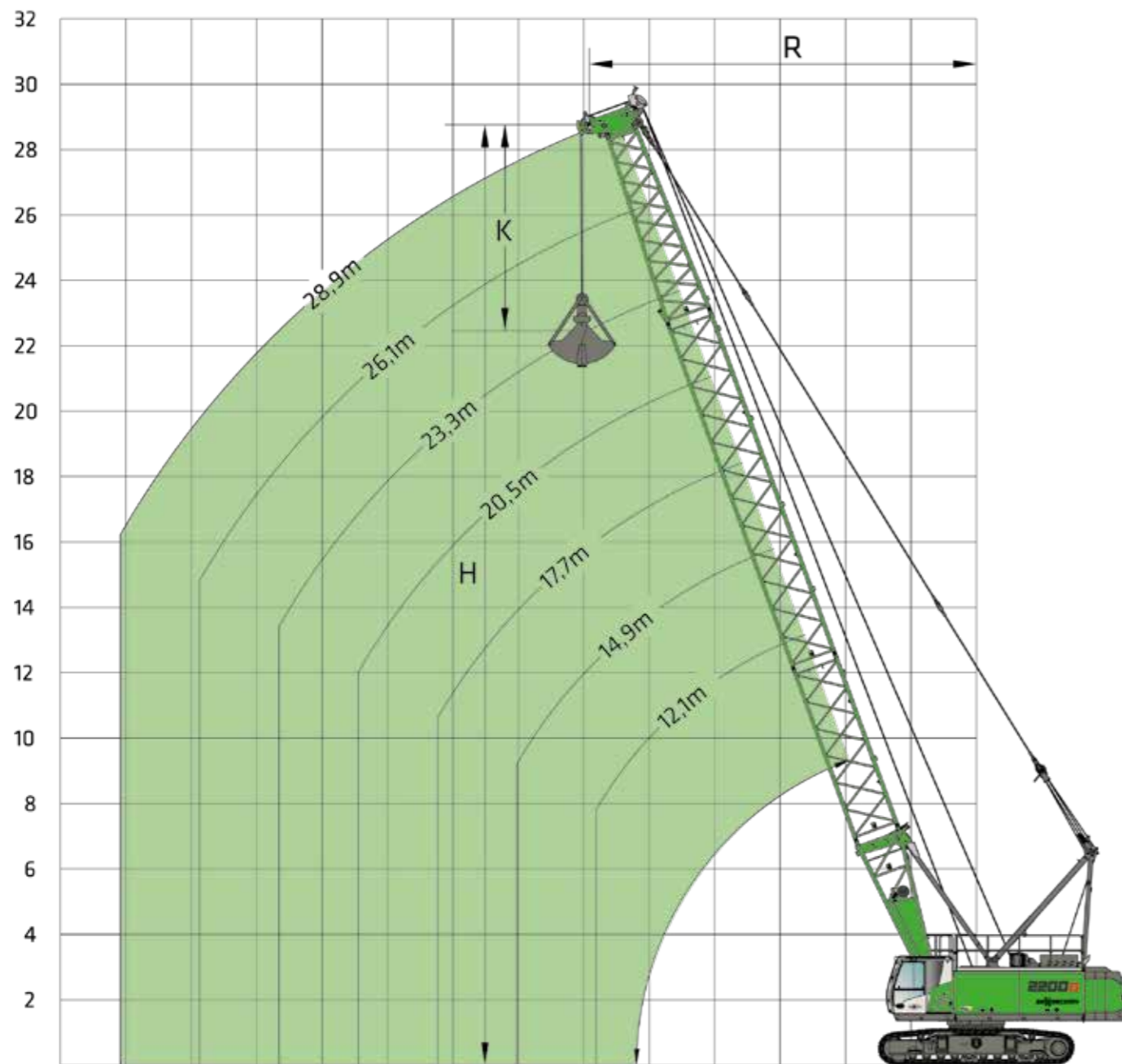
OPTIONAL EQUIPMENT




AUXILIARY JIB S12.1
1-strand, max. load capacity 12 t, cable diameter 22 mm

CRANE EQUIPMENT

 MAIN BOOM SH WITH CLAMSHELL EQUIPMENT



LOAD RATINGS

 MAIN BOOM SH WITH CLAMSHELL EQUIPMENT

 BALLAST
25 t

 EN  360°

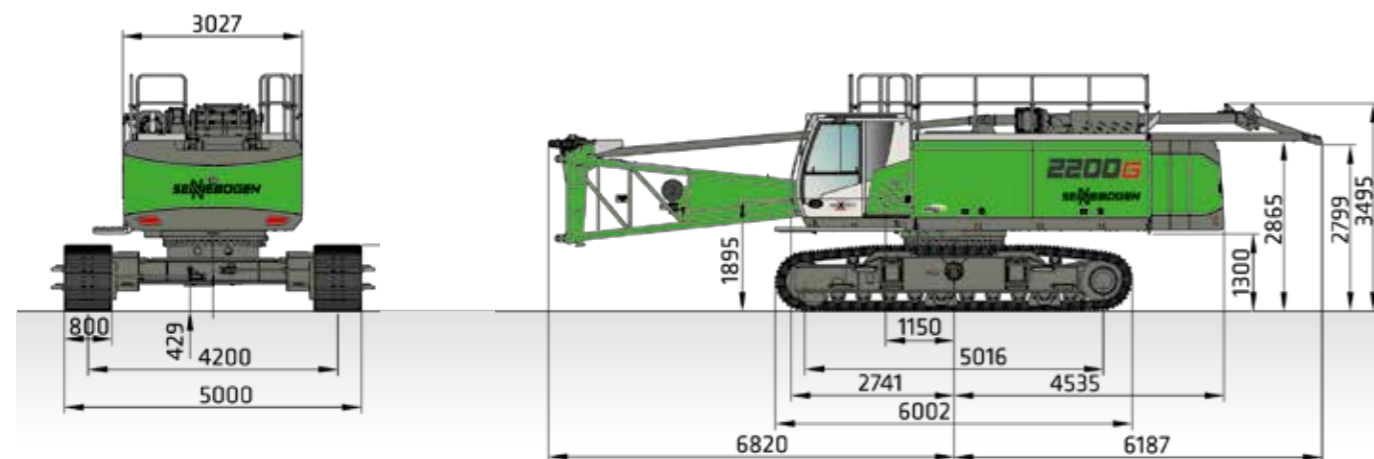
α	MAIN BOOM LENGTH [m]														
	17,7			20,5			23,3			26,1			28,9		
	R	H	⚙️	R	H	⚙️	R	H	⚙️	R	H	⚙️	R	H	⚙️
70°	8.0 m	18.2 m	15.0 t	9.0 m	20.9 m	15.0 t	9.9 m	23.5 m	15.0 t	10.9 m	26.1 m	15.0 t	11.8 m	28.8 m	15.0 t
65°	9.4 m	17.6 m	15.0 t	10.6 m	20.1 m	15.0 t	11.8 m	22.7 m	15.0 t	13.0 m	25.2 m	13.6 t	14.1 m	27.7 m	12.1 t
60°	10.7 m	16.8 m	15.0 t	12.1 m	19.2 m	15.0 t	13.5 m	21.7 m	12.9 t	14.9 m	24.1 m	11.2 t	16.3 m	26.5 m	9.9 t
55°	12.0 m	15.9 m	15.0 t	13.6 m	18.2 m	12.9 t	15.2 m	20.5 m	11.0 t	16.8 m	22.8 m	9.5 t	18.4 m	25.1 m	8.4 t
50°	13.2 m	14.9 m	13.5 t	15.0 m	17.1 m	11.3 t	16.8 m	19.2 m	9.7 t	18.6 m	21.3 m	8.3 t	20.4 m	23.5 m	7.3 t
45°	14.3 m	13.8 m	12.2 t	16.2 m	15.8 m	10.2 t	18.2 m	17.8 m	8.6 t	20.2 m	19.8 m	7.4 t	22.2 m	21.7 m	6.5 t
40°	15.3 m	12.6 m	11.1 t	17.4 m	14.4 m	9.3 t	19.5 m	16.2 m	7.9 t	21.7 m	18.0 m	6.7 t	23.8 m	19.8 m	5.9 t
35°	16.1 m	11.4 m	10.4 t	18.4 m	13.0 m	8.6 t	20.7 m	14.6 m	7.3 t	23.0 m	16.2 m	6.2 t	25.3 m	17.8 m	5.4 t
30°	16.9 m	10.0 m	9.7 t	19.3 m	11.4 m	8.1 t	21.8 m	12.8 m	6.8 t	24.2 m	14.2 m	5.8 t	26.6 m	15.6 m	5.0 t

Notes:

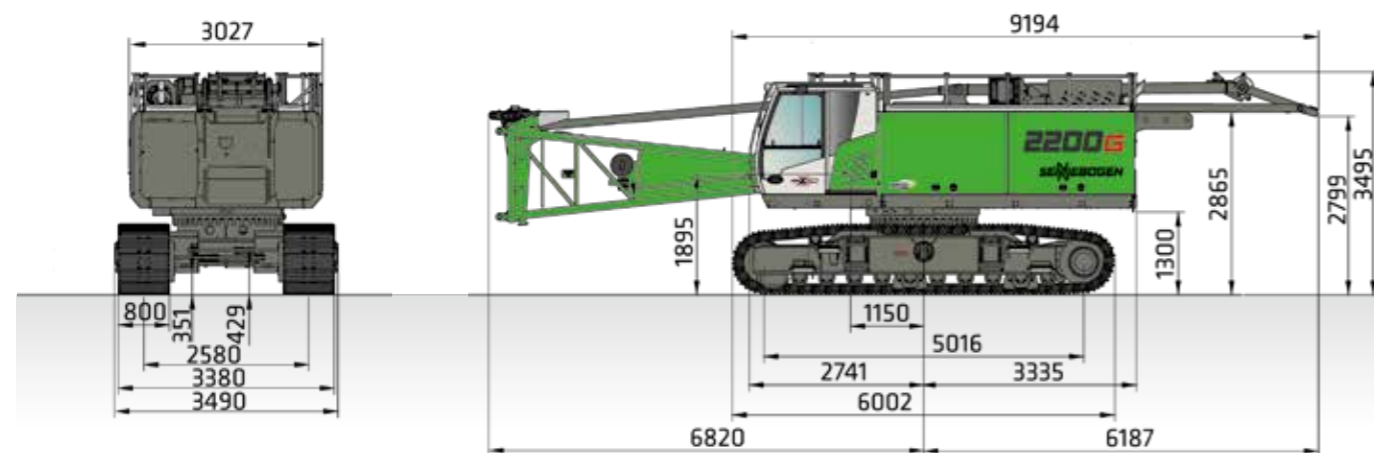
- The specified load ratings apply when the machine is on a firm and level surface.
- The load ratings are given in tonnes and apply 360 degrees.
- The load ratings apply for a maximum support width / undercarriage track width.
- The grab weight is considered part of the load, max. capacities do not exceed 66,7% of tipping load.
- At operation with the mechanical two-rope clamshell the capacity is limited by the permitted cable line pull and the maximum winch power of one single winch:

winch power [kN]	120
cable diameter [mm]	22
min. breaking load [kN]	426
permitted cable pull [t]	12.0

TRANSPORT DIMENSIONS



2200 G with 25 t counterweight, telescopic undercarriage T87/420, lower boom section, 2 x 12 t winch, approx. 68 t

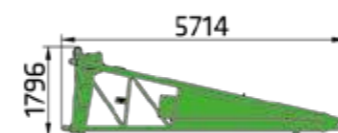


2200 G without counterweight, telescopic undercarriage T87/420, lower boom section, 2 x 12 t winch, approx. 43 t

TRANSPORT DIMENSIONS

LOWER BOOM SECTION 5.5 m TYPE 1442

i Weight: 1800 kg



BOOM SECTION 2.8 m TYPE 1442

i Weight: 400 kg (incl. suspension ropes)



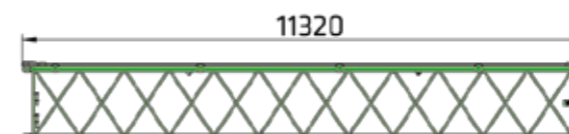
BOOM SECTION 5.6 m TYPE 1442

i Weight: 650 kg



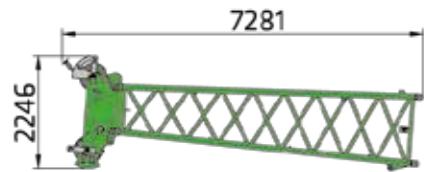
BOOM SECTION 11.2 m TYPE 1442

i Weight: 1120 kg (incl. suspension ropes)



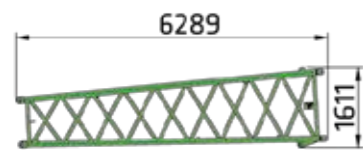
TRANSPORT DIMENSIONS

CONICAL BOOM SECTION 6.1 m TYPE 1442 WITH BOOM HEAD T70



i Weight: 1550 kg
(incl. suspension ropes)

CONICAL BOOM SECTION 6.1 m TYPE 1442



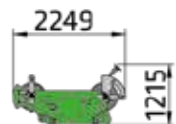
i Weight: 800 kg

AUXILIARY JIB S12.1 LOAD CAPACITY 12 t



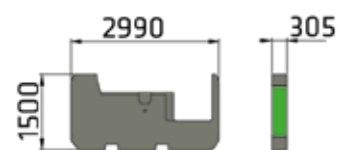
i Weight: 370 kg

BOOM HEAD T70



i Weight: 750 kg

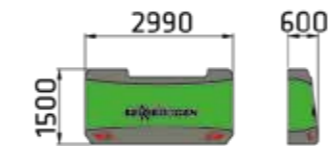
COUNTERWEIGHT 2 PIECES



i Weight: 6500 kg

TRANSPORT DIMENSIONS

COUNTERWEIGHT



i Weight: 12200 kg

LOWER BOOM SECTION 7.5 m TYPE 660 WITH A-FRAME (FIXED JIB)



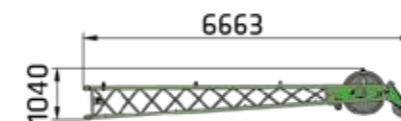
i Weight: 970 kg
1300 kg (incl. suspension ropes)

BOOM SECTION 5.6 m TYPE 660 (FIXED JIB)



i Weight: 350 kg (incl. suspension ropes)

HEADPIECE 5.6 m TYPE 660 (FIXED JIB)



i Weight: 480 kg
(incl. suspension ropes)

READ MORE



www.sennebogen.com/2200



Prefabricated parts assembly; France



Microtunnelling, Italy



Hydraulic engineering;
Netherlands *



The 2200 G is also available in the special version as a mobile
port crane with elevating cab; Alderney, UK



SENNEBOGEN ACADEMY

Increase your knowledge because success is based on knowledge. In the SENNEBOGEN ACADEMY we place great importance on ensuring it flows powerfully.

➔ www.sennebogen-academy.com



SERVICE AND MAINTENANCE

omprehensive customer service. And supply of spare parts. Service is a TOP priority for us.

➔ www.sennebogen.com/customer-service



SENtrack

Efficient fleet management with SENtrack: Use information that would otherwise stay hidden and increase your efficiency.

➔ www.sennebogen.com/sentrack



RENTAL & USED

Discover the unique range of rental machines available from SENNEBOGEN Rental & Used. Find your rental machine here:

➔ www.sennebogen-rental-used.com

JOIN OUR OPERATORS' CLUB

The spotlight is on you and your machine! We focus on exclusive information, sharing experiences with other SENNEBOGEN operators as well as fun and enthusiasm.

All benefits here ➔ www.sennebogen.com/operators-club



MOVE BIG THINGS WITH US



over **71** years of experience

100 % family company

over **2200** experienced specialists worldwide

5 production plants in Germany

over **180** sales and service partners worldwide

5 different lattice boom crawler cranes



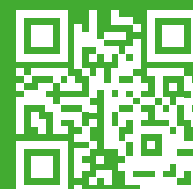
Telehandler 4-5,5 t	Balancer 130-300 t	Material handler 17-420 t	Duty cycle crane 13,5-300 t	Crawler crane 50-300 t	Telescopic crane 16-130 t	Port crane 300 t
------------------------	-----------------------	------------------------------	--------------------------------	---------------------------	------------------------------	---------------------

2200G

Order no. 404882
2200-G-072310

This catalog describes machine models, the scope of equipment of individual models, and configuration options (standard equipment and optional equipment) of the machines delivered by SENNEBOGEN Maschinenfabrik GmbH. Machine illustrations may contain optional and supplementary equipment. Actual equipment may vary depending on the country to which the machines are delivered, especially in regard to standard and optional equipment. All product designations used may be trademarks of SENNEBOGEN Maschinenfabrik GmbH or other supplying companies, and any use by third parties for their own purposes may violate the rights of the owners.

Please contact your local SENNEBOGEN sales partner for information concerning the equipment variants offered. Requested performance characteristics are only binding if they are expressly stipulated upon conclusion of the contract. Delivery options and technical features are subject to change. All information is supplied without liability. Equipment is subject to change, and rights of advancement are reserved. © SENNEBOGEN Maschinenfabrik GmbH, Straubing, Germany. Reproduction in whole or in part only with written consent of SENNEBOGEN Maschinenfabrik GmbH, Straubing, Germany.



» sennebogen.com/2200

SENNEBOGEN
Maschinenfabrik GmbH
Hebbelstraße 30
94315 Straubing, Germany

➔ www.sennebogen.com

MOVE BIG THINGS

SALES SENNEBOGEN

Sales Crane Line

☎ +49 (0) 9421 / 540 - 146

✉ cranes@sennebogen.de

SPARE PARTS CENTER

Spare parts orders

✉ spareparts@sennebogen.de

AFTER SALES

Technical support

✉ service@sennebogen.de

