

PORT MATERIAL HANDLER

MOBILE / CRAWLER

870E Hybrid

The maneuverable material handler with an operating weight of up to 135 t is ideal for use at ports.

Numerous configuration options and customer-specific undercarriage solutions make it the ideal machine for industrial applications and demanding material handling tasks in ports.

Energy efficiency

Appreciated around the world, thanks to drives that are resource- and environmentally-friendly and the Green Hybrid energy recovery system – whether with diesel drive or as an electric version.

Occupational safety

Thanks to the precisely controlled movements and the numerous safety features, you can work effortlessly and safely throughout your day.

A long-term investment

The E-series is characterized by robust components, and an intelligent and resource-efficient machine design – the machine retains its value over the long-term, even with demanding continuous use.

Maintenance & service

Intelligent fleet management and machine status monitoring via the SENtrack portal as well as unique accessibility of machine components.

Modular variety

Unique machine variety – we build the perfect machine to meet the needs of your port.

Maximum comfort

The spacious cabs are designed with the needs of the operator in mind – comfortable and spacious with sophisticated features.



The port specialist.

AN INVESTMENT THAT PAYS OFF.

>160 COILS

per hour are unloaded by this 870 E in Belgium

The durability and reliability of the SENNEBOGEN Green Line is based on decades of experience in the design of high-quality crane and material handling technology. We can find the perfect solution for every port application, ensuring you can handle general cargo and bulk materials in an efficient and resource-saving way.



Low operating costs thanks to energy-efficient electric drives and energy recovery through the Green Hybrid system



Manageable and service-friendly technology for maximum machine availability



Consistent performance thanks to robust steel construction, and high-quality drive and control components from renowned manufacturers



High handling capacity of up to 850 t per hour* reduces the berthing time of ships



Sophisticated technology thanks to the consistent further development up to the 5th generation of the E-Series – for demanding material handling



Durable and robust in extreme weather and harsh operating conditions, works equally well in the cold of the Arctic Circle or the heat of Dubai

* The specified handling capacity is a reference value that can be achieved with the appropriate grab for the machine (see Attachments catalog). Actual handling capacities depend on the individual loading and unloading situation in the port and are the result of various parameters (e.g. lifting height, angle of rotation, ship shape, grab fill level, grab).

Advanced. The E series.



LONG SERVICE LIFE, HIGH VALUE RETENTION

- Reliable and powerful thanks to its robust construction and high-quality components.
- Temperature-controlled cooling system, designed and tested for heavy-duty applications and high ambient temperature

SOPHISTICATED, STATE-OF-THE-ART TECHNOLOGY

- In the 5th generation – decades of experience in designing and constructing material handlers

SIMPLE TO MAINTAIN AND SERVICE

- Manageable technology and no over-engineering
- Ideal accessibility to all components for easy maintenance

ENVIRONMENTALLY-FRIENDLY DRIVE TECHNOLOGY

- State-of-the-art engine, drive and emission systems in line with the latest technology standards (stage V)
- Large-scale pipes and valves for maximum efficiency

Up to
50 %

saving in operating costs
by significantly reducing
energy consumption



SENNEBOGEN – WORLD LEADER IN ELECTRIC MATERIAL HANDLERS.

Over the last **35 years**, we have implemented by far
the most electrical applications

- ✔ A complete solution direct from the manufacturer – detailed route analyses and individual power supply project planning, tailored specifically to your application
- ✔ A variety of solutions for power supplies, voltage types and emergency operating units ex works
- ✔ No fueling stops or need to store fuel - always ready for use
- ✔ Service intervals twice as long and lower service costs: No need for fuel/oil filter and oil changes compared to a diesel engine
- ✔ High value retention and significantly longer service life
- ✔ No exhaust gases – good for the environment, good for people
- ✔ Low-noise and vibration-free operation for greater working comfort
- ✔ Cleaner engine compartment even after long operating period

The image shows an
875 E with electric drive.

GREEN HYBRID – THE MOST ADVANCED ENERGY RECOVERY TECHNOLOGY ON THE MARKET

Save up to
35 %
energy with
hybrid hydraulic cylinder

GREEN HYBRID ENERGY RECOVERY TECHNOLOGY



Energy recuperation through safe & smart design: Watch the video to find out how the SENNEBOGEN Green Hybrid system makes port handling even more efficient.

<https://www.sennebogen.com/green-hybrid>



1 Boom lowers, gas compresses



2 Energy storage module consisting of nitrogen accumulators



3 The nearly constant force transmission throughout the cylinder cycle supports the next boom lift

SENEBOGEN GreenHybrid

Protects the environment,
saves energy,
reduces your costs.

- ✔ System advantages: large system volume and constant force transmission over the entire cylinder cycle
- ✔ System stability through constant pressure and temperature control
- ✔ Functional safety through the use of standard hydraulic components in the protected rear area of the machine
- ✔ System can be optimally adjusted to the individual task, depending on the weight of the material being handled
- ✔ Simple inspection and system filling via SENCON control system from the operator's seat

SAFETY FIRST.

Enjoy a safe work environment thanks to numerous safety features developed especially for port use. Protecting people, port and machine.

Safe & ergonomic

optimum cab and machine component accessibility via stairs and ascents

Component safety

maximum service life thanks to the robust steel construction - produced in our very own subsidiary

HOW TO OPERATE THE SAFETY BOOM LIFT



This video will show you how the SENNEBOGEN Safety Boom Lift works.

<https://www.sennebogen.com/safety-boom-lift>



Safety Boom Lift

Grab automatically lifts as it closes, protecting ship hulls, port surfaces, equipment and the grab itself

Bio Oil

for extended oil change intervals, with safe environmental compatibility

SENtrack

Maintain fleet management safety by monitoring the condition of your machines

Powerful LED spotlights

for optimal illumination of the work area

Load moment limitation

Protection of equipment by switching off in the event of an impermissible load

Optimal camera monitoring

of all safety-relevant areas*

EXPERIENCE VARIETY FOR EVERY TYPE OF MATERIAL

Today general cargo, tomorrow bulk cargo – working in the port means staying flexible from day to day. The entire range of handling technology can be flexibly operated using the quick change system on the stick and the SENNEBOGEN port machines' powerful hydraulics.



Bulk material (feed, coal, etc.)



Scrap handling



Timber grab



Big Bag loading



Timber spreader/wooden pallet loading



Pulp spreader



Paper coil grab



Quick change system with lifting beam



Vacuum lifter

QUICK AND EASY GRAB CHANGE



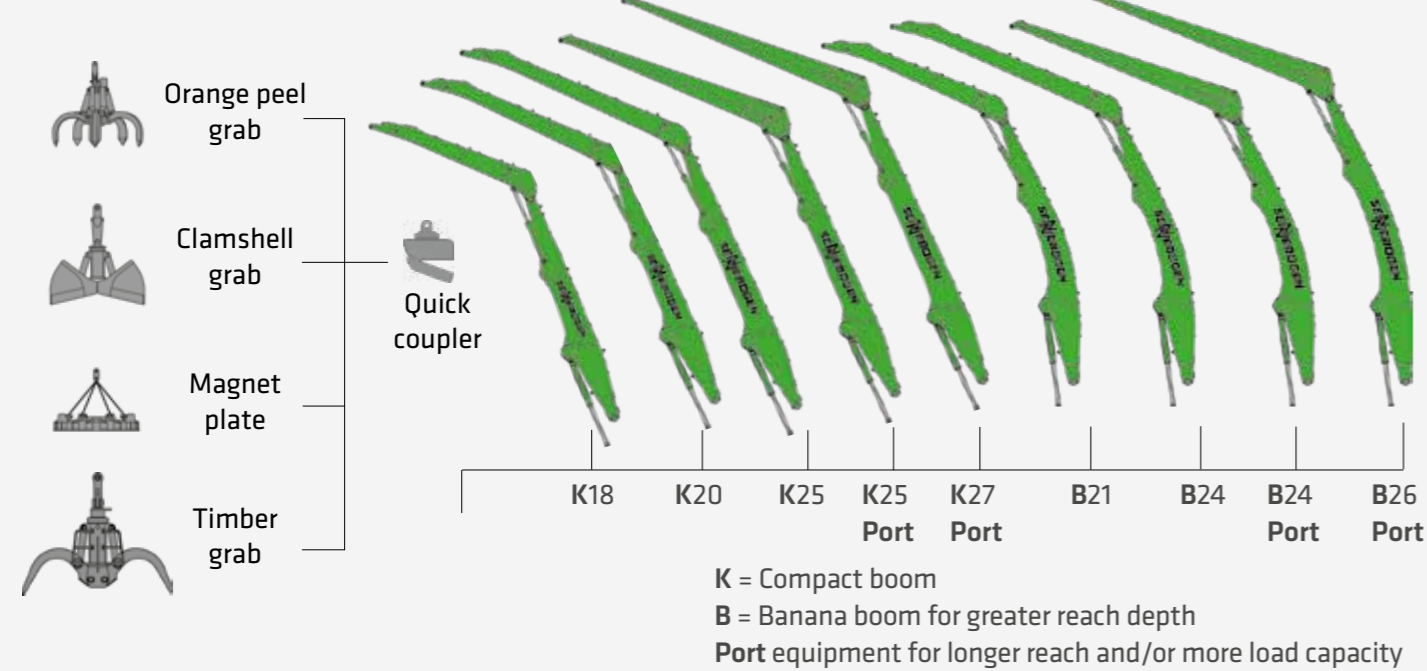
Watch the video to see how quick and easy it is to change the grab with the quick change system on the stick!

<https://www.sennebogen.com/quick-coupler>

A MODULAR DESIGN. NUMEROUS APPLICATIONS.

WHAT DOES YOUR MACHINE LOOK LIKE?

EQUIPMENT

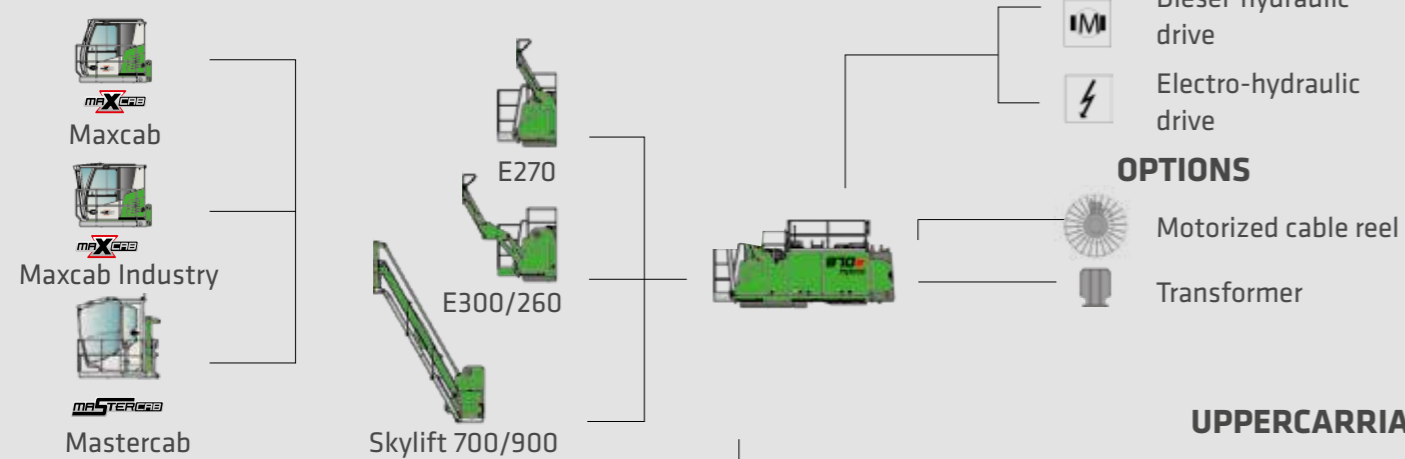


Configure your individual machine from our modular system. The great variety of solutions that we can implement in this way is unique anywhere in the world.



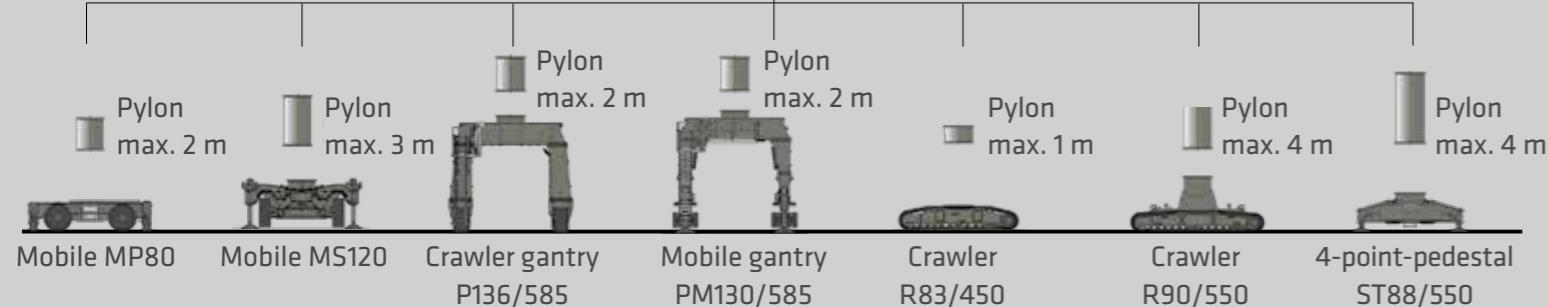
CAB

CAB ELEVATION



UPPERCARRIAGE

UNDERCARRIAGE



CUSTOM CONFIGURATION

More than 16,000 unique material handling solutions can be delivered through SENNEBOGEN's modular machine design - watch the video now!

<https://www.sennebogen.com/versatility>

MAXIMUM COMFORT.



Everything in view

The spacious cab with panoramic view gives you a practical overview of your work area. The window in the floor makes it possible to carry out precise loading operations even in close proximity. The safety cameras provide support and allow you to monitor the critical areas conveniently via the monitoring system in the cab.

Easy control

The intelligent SENCON control system gives you quick and easy feedback on the machine's condition. Thanks to the intuitive user interface, it has never been easier to monitor energy consumption and utilization, control the desired working modes and contribute towards reducing operating costs.

For your health

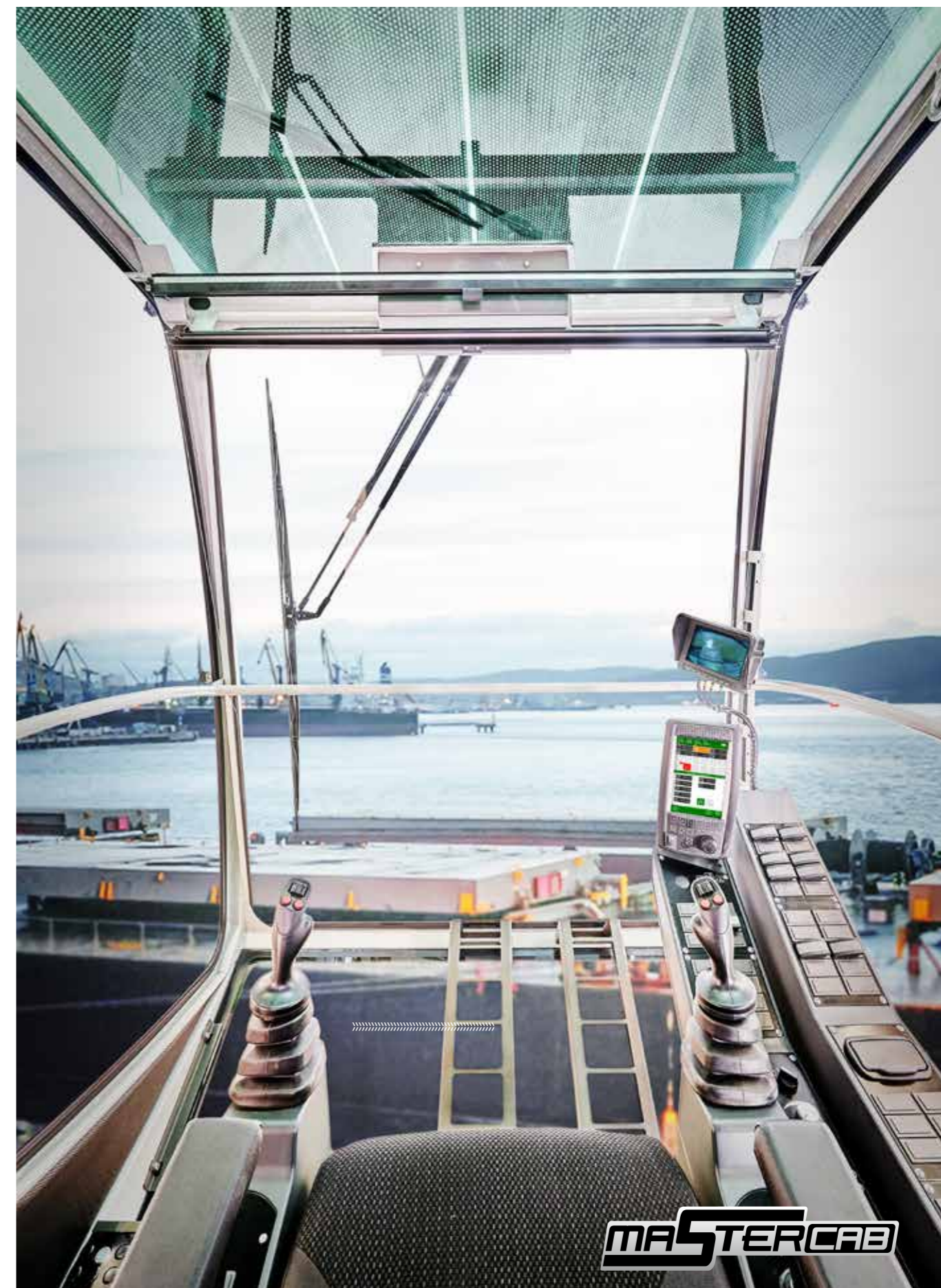
Operators spend many hours in their working position. The back-friendly comfort seat, adjustable armrests, joysticks that sit comfortably in the hand, and the optimally arranged controls make daily work as easy as possible.

Pleasant indoor climate

Whether in warmer areas or in ports with sub-zero temperatures, you can enter a work space with a comfortable temperature every day and concentrate on the essentials of work thanks to automatic heating and air conditioning.

"We are constantly on site with users to optimize the design of the workplace and discuss new developments."

ROBERT AUMÜLLER,
Head of the Port Business Unit



CAB HIGHLIGHTS



Maxcab



Maxcab Industry



Spacious Mastercab

ALWAYS THE RIGHT VIEWING ANGLE

The name 'Skylift' can be taken literally! Depending on the version and undercarriage being used, the flexible cab adjustment allows you to look into a ship's hull from around 13.5 meters. Thanks to a sophisticated system of steps, ascents and railings, access to the cab and maintenance points on the uppercarriage is safe and comfortable.



IN SERIES		
ENTRANCE	Sliding door incl. sliding window	Sliding door incl. sliding window
WINDSHIELD	Tinted safety glass	Undivided windshield made from bullet proof glass, rigidly glazed
SKYLIGHT	Safety glass skylight	Bullet proof skylight
FLOOR WINDOW	-	-
WIPERS	Wipers for skylight Wiper and washer system for front windshield	Wipers for skylight Wiper and washer system for front windshield
AIR CONDITIONER	Heating/air conditioning system with fresh air and recirculating air filter	Heating/air conditioning with fresh air and recirculating air filter
FLOODLIGHTS	Floodlights integrated into roof	Floodlights integrated into roof
FOLDAWAY SEAT	-	-
RADIO PREPARATION	✓	✓
SENCON CONTROL AND DIAGNOSTIC SYSTEM	✓	✓
OPTIONS		
AIR-CONDITIONED SEAT	✓	✓
RADIO	✓	✓
COOLING BOX BEHIND THE OPERATOR'S SEAT	✓	✓
PROTECTIVE GRILLE ON SKYLIGHT AND WINDSHIELD	✓	✓
SUN PROTECTION PACKAGE	✓	✓

ENTRANCE	Easy access through wide cab door
WINDSHIELD	Tinted double glazing for side windows
SKYLIGHT	Large roof window with sun protection slats
FLOOR WINDOW	Bullet proof glass floor window
WIPERS	Wipers for skylight Parallelogram wipers for harsh weather conditions
AIR CONDITIONER	Automatic air conditioning with optimized de-icing and demisting function
FLOODLIGHTS	Floodlights integrated into the uppercarriage and roof
FOLDAWAY SEAT	Foldaway seat in cab
RADIO PREPARATION	✓
SENCON CONTROL AND DIAGNOSTIC SYSTEM	✓
AIR-CONDITIONED SEAT	✓
RADIO	✓
COOLING BOX BEHIND THE OPERATOR'S SEAT	✓
PROTECTIVE GRILLE ON SKYLIGHT AND WINDSHIELD	✓
SUN PROTECTION PACKAGE	✓

PROFESSIONAL FLEET MANAGEMENT

SENtrack

1. Reduce service costs

The dashboard is used to monitor the machine and its main operating parameters (temperatures, consumption). If key figures deviate significantly from the target value, preventive maintenance can be arranged.

2. Reduce consumption

You will receive daily updated insights into your fleet processes: Easily identify and optimize times when machines are idle or change set parameters when machines are underloaded to reduce consumption.

3. Improve productivity

With just a few clicks, you can identify and optimize machine capacity, analyze routes if required and thus make your port processes more profitable.

4. Safeguard your investment

Practical alarm messages inform you about critical machine conditions. In the event of irregular movements, the machine can also easily be deactivated remotely.



“What if you could receive real-time data from all your machines with just one click and so increase your productivity? SENNEBOGEN’s SENtrack telematic system makes this possible.”

MAINTENANCE AND SERVICE.

KEEP IT SIMPLE. WITH MANAGEABLE TECHNOLOGY.



Reliable and practical technology makes life easier. Where electronics add no value, we rely on hydraulics and electrical systems.



We make you happy, not reliant. With cost-effective components and fewer process steps, you can take care of your own machine.



The most important components, such as the accumulator module or the electrical distributor, are all easily accessible from a central point for straightforward checking and troubleshooting.



The SENCON control system supports you with diagnostics and makes troubleshooting easier. So your machine is back in action more quickly.

All maintenance and service points are clearly arranged and easily accessible. The clear labeling of components makes finding your way around easy.

TECHNICAL DATA, EQUIPMENT

MACHINE TYPE

MODEL (TYPE) 870 Hybrid

DIESEL ENGINE

TYPE **Stage V:**
Cummins X12-FR21082
Rated power: 261 kW/1800 rpm
Operating point standard: 261 kW/1800 rpm
Operating point ECO: 260 kW/1650 rpm

TIER 3a
Cummins QSM11-FR21134
Rated power: 268 kW/1800 rpm
Operating point standard: 268 kW/1800 rpm
Operating point ECO: 264 kW/1650 rpm

both: Automatic idle/stop

COOLING charge air cooling, coolant cooling

DISPLACEMENT **Stage V:**
11.8 l
TIER 3a
10.8 l

NUMBER OF CYLINDERS 6

BATTERIES 2 x 180 Ah, battery disconnect switch

ELECTRICAL SYSTEM Alternator
Stage V:
24 V/120 A
Stage IIIa:
24 V/120 A

Starter motor
Stage V:
24 V/7.5 kW
Stage IIIa:
24 V/7.2 kW

OPTIONS Engine oil preheating, coolant preheating
Electric fuel pump
Jump start pole

TANK CAPACITIES

FUEL 1000 l

ADBLUE 100 l (Stage V)

HYDRAULIC TANK 900 l

COOLANT Entire machine:
approx. 70 l (stage V); approx. 60 l (Stage IIIa)

ENGINE OIL 34 l

CENTRAL LUBRICATION SYSTEM Automatic central lubrication for equipment and slewing ring, display of fault and empty message via SENCON
Lubrication pump with 8 kg reservoir (for approx. 300 operating hours)

UPPERCARRIAGE

DESIGN Torsion-resistant box design, precision crafted, steel bushings for boom mounting. Very service-friendly design, engine installed in the longitudinal direction

COOLING SYSTEM Cooling system with 3 cooling circuits and demand-driven fan control consisting of: Coolant cooling and hydraulic oil cooling, hydraulically driven, thermostatically controlled incl. fan reversal.

OPTIONS LED lighting package
Swing bearing brake via foot pedal
Fire extinguisher
Maritime climate paint
Low temperature packages
Electrical Hydraulic tank preheating
Magnetic generator 25 kW



TECHNICAL DATA, EQUIPMENT

ELECTRIC DRIVE

OPTIONS Type: 250 kW, standard with frequency converter

Power: Total connected load 410 kVA, machine side fuse 500 A (alternatively 630 with magnet system) for 400 V - star-delta connection motor start

IP protection class: IP 55 standard, (IP 65 optional)

HYDRAULIC SYSTEM

Load-sensing/ LDUV hydraulic system, hydraulically operated work functions

DELIVERY RATE 2 x 475 l/min and 1 x 274 l/min for rotary drive

OPERATING PRESSURE up to 350 bar

CONTROL SYSTEM Proportional, precision hydraulic actuation of the work movements, 2 hydraulic servo joysticks for work functions, additional functions via switches and foot pedals

SAFETY Hydraulic circuits safeguarded with safety valves
Pipe fracture safety valves for lift and stick cylinders
Emergency lowering of the equipment in case of engine standstill

OPTIONS Bio-oil filling
Tool Control for programming pressure/ rate of up to 10 tools
Load torque warning with capacity display
Overload safeguard with shutdown
SENNEBOGEN HydroClean micro-filter system (3 µm)

SLEWING DRIVE

GEARBOX Compact planetary gear with bent-axis hydraulic engine, integrated brake valves

SLEW BRAKE Spring-loaded multi-disk brake

SLEWING RING Externally geared slewing ring with 360° protection and pinion lubrication

SLEWING SPEED 0-5 rpm, variable

CAB²



CAB TYPE Maxcab, 2.7 m elevation

CAB FEATURES Sliding door incl. sliding window, vibration damper, tinted safety glass, opening windshield, skylight, windshield wipers, radio preparation, air-suspension comfort seat, joystick steering, SENCON

OPTIONS Maxcab Industry with slanted windscreen
Cab adjustment can be raised 3 m and moved forward 2.6 m
Spacious Mastercab
Skylift cab elevation (elevation 9 m)
Skylift cab elevation (elevation 7 m)
Windscreen/roof window made of bulletproof glass (Mastercab)
Polycarbonate safety glass
Protective roof guard, FOPS if applicable
Protective front guard
Carbon filter for circulation/outside air
Auxiliary heating system
Air-conditioned seat
Radio
Cooling box



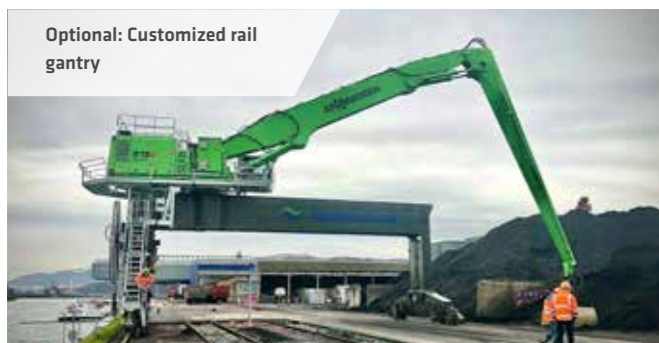
TECHNICAL DATA, EQUIPMENT

UNDERCARRIAGE

MOBILE	MP80 mobile undercarriage with integrated 4-point outrigger, steering axle as hydraulically lockable pendulum axle, pendulum axle cylinder with pipe-fracture safety valves, all-wheel drive via an adjustable hydraulic motor with directly attached, automatically actuated brake valve and planetary axles with integrated steering cylinders, service brake with 2-circuit system
TRANSPORT WIDTH	4250 mm
TIRE TYPE	26,5 - 25,4 times
BRAKES	hydraulic
OUTRIGGER SIZE	800 x 680 mm
TRAVEL SPEED	0-10 km/h variable

CRAWLER GANTRY

UNDER-CARRIAGE TRACK WIDTH	7210 mm
TRACK GAUGE	5850 mm
PLATE WIDTH	900 mm
UNDER-CARRIAGE LENGTH	8425 mm
RAIL GANTRY	Customized, tailored to your application Pylon extension



MOBILE GANTRY

UNDER-CARRIAGE WIDTH	7450 mm
TIRE TYPE	355/65-15 pneumatic tires
BRAKES	hydraulic
OUTRIGGER PLATE SIZE	Ø 1600 mm
TRAVEL SPEED	0-4 km/h variable

CRAWLER

Crawler undercarriage, mechanically telescopic with hydraulic travel drive on each chassis side integrated in the chassis frame by an axial piston engine via compact planetary gears, spring-loaded parking brake, hydraulically ventilated multi-disk brake

UNDER-CARRIAGE TRACK WIDTH	5400 mm, transport width: 3800 mm
TRACK GAUGE	2800 - 4500 mm
PLATE WIDTH	900 mm
UNDER-CARRIAGE LENGTH	7000 mm
TRAVEL SPEED	0-2,7 km/h
OPTION	Special undercarriage with integrated 2 m pylon 900 mm rounded flat track shoes 900 mm canted flat track shoes



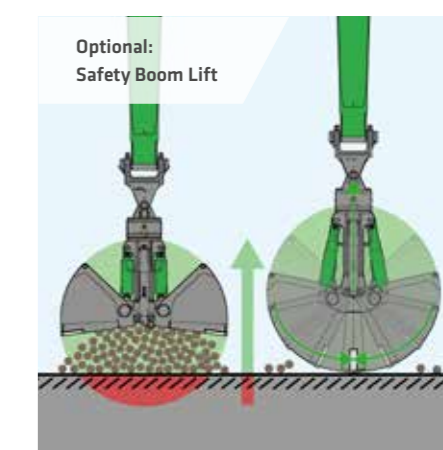
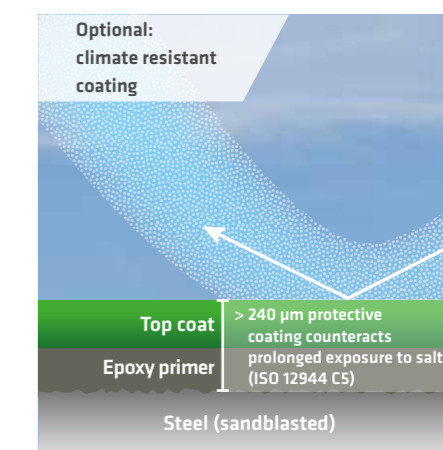
TECHNICAL DATA, EQUIPMENT

EQUIPMENT

REACH	up to 27 m
CYLINDERS	Hydraulic cylinders with high-quality sealing and guide elements, end position damping, sealed mounting points
OPTIONS	Safety Boom Lift for equipment Sea climate resistant coating of all cylinders, nickel-plated and chrome-plated Adjustable lift limitation / stick limitation LED lighting Stick mounted camera Special port equipment with increased load capacities

OPERATING DATA

REACH	up to 27 m
OPERATING WEIGHT	95 - 135 t
NOTE	Operating weight varies by model and equipment.



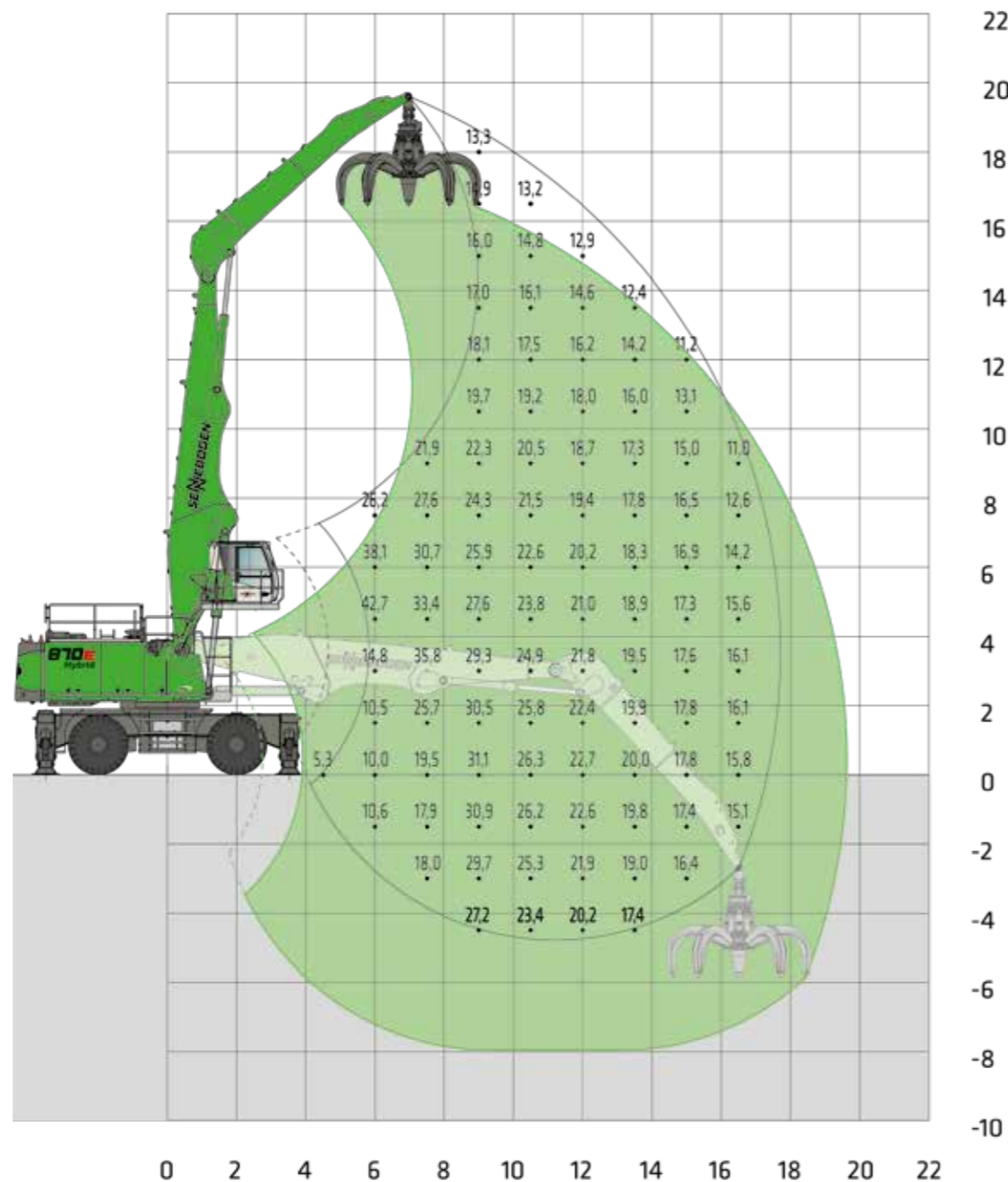
LOAD RATINGS K18

The load ratings are given as information only. Please contact our regional sales partners or portdivision@sennebogen.de for a detailed project study.


MP80

MAXCAB
 2.70 m elevating (E270)


10.8 m boom
7.8 m grab stick



Machine shown in mirror image

20180910115201


Notes:
 All load ratings are given in tons (t) brought to bear at the end of the stick, without tools on firm level ground. Working tools such as grab, magnet, load hook, etc. are included in the specified load ratings. The stated values are 75 % of the static tipping load or 87 % of the hydraulic lifting force according to ISO 10567 and apply at the required operating temperature in the Green Hybrid system. According to EU standard EN 474/5, hydraulic material handlers used for hoisting must be equipped with a pipe rupture safety device on lifting and stick cylinders and an overload warning device. The specified load ratings apply to maximum track width and 360° slewing.

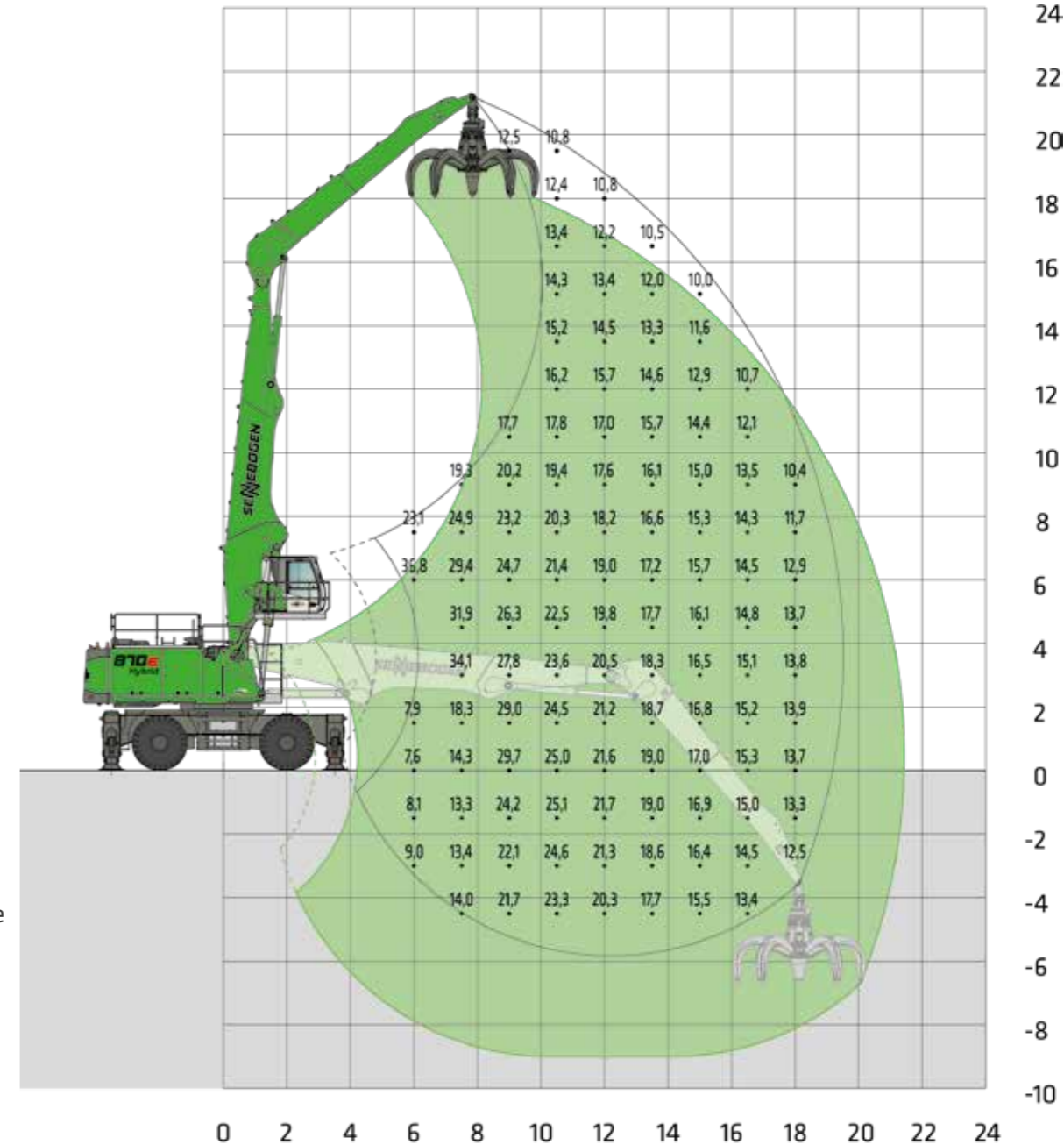
LOAD RATINGS K20

The load ratings are given as information only. Please contact our regional sales partners or portdivision@sennebogen.de for a detailed project study.


MP80

MAXCAB
 2.70 m elevating (E270)


11.8 m boom
8.8 m grab stick



Machine shown in mirror image



20180910115358

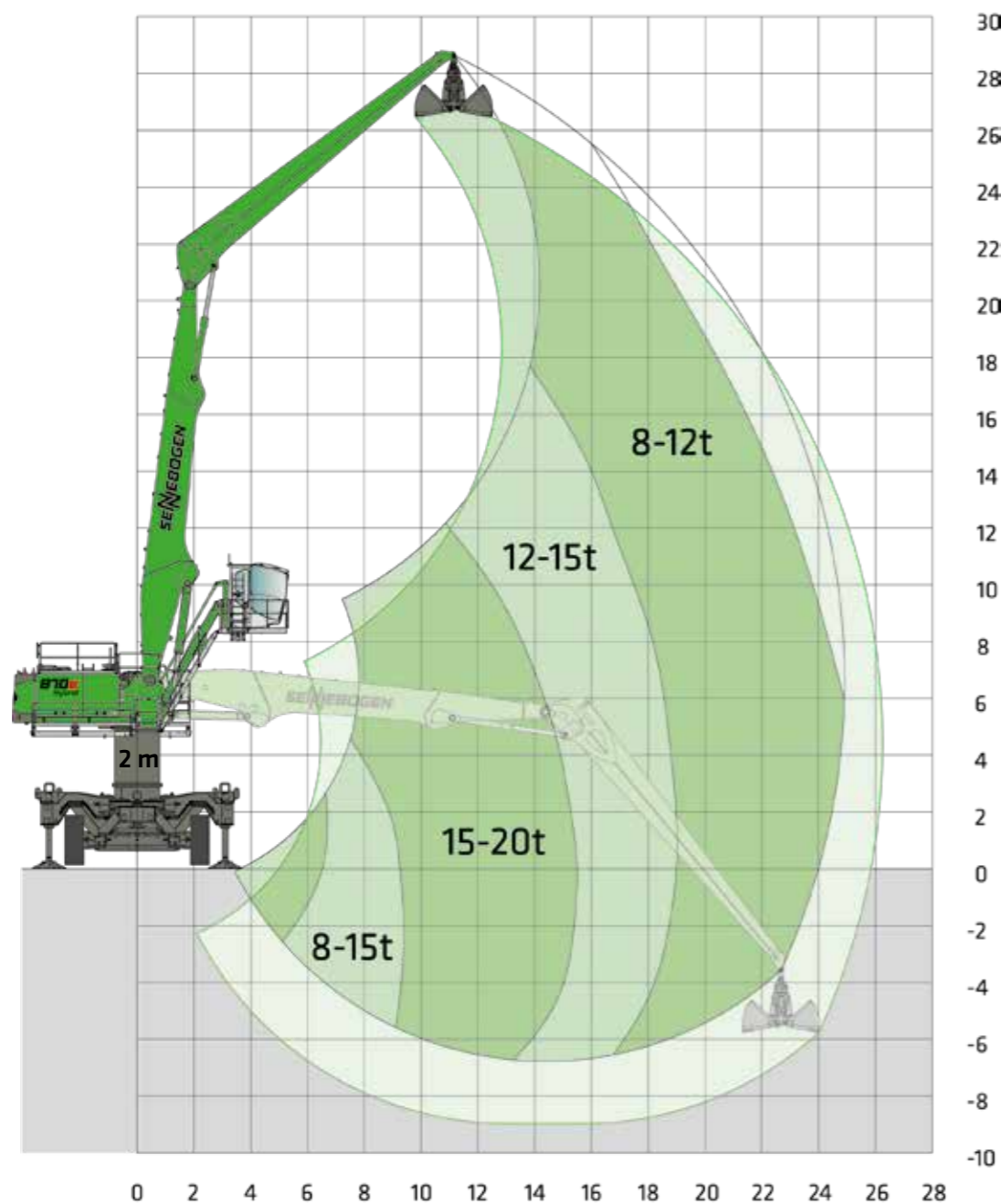
Notes:
 All load ratings are given in tons (t) brought to bear at the end of the stick, without tools on firm level ground. Working tools such as grab, magnet, load hook, etc. are included in the specified load ratings. The stated values are 75 % of the static tipping load or 87 % of the hydraulic lifting force according to ISO 10567 and apply at the required operating temperature in the Green Hybrid system. According to EU standard EN 474/5, hydraulic material handlers used for hoisting must be equipped with a pipe rupture safety device on lifting and stick cylinders and an overload warning device. The specified load ratings apply to maximum track width and 360° slewing.

LOAD RATINGS K25 PORT

The load ratings are given as information only. Please contact our regional sales partners or portdivision@sennebogen.de for a detailed project study.

 **MS120**
 **SKYLIFT 700 with MASTERCAB, hydraulically elevating (option)**
 **Pylon extension 2.0 m**

 **14 m boom**
 **12.3 m grab stick**



Machine shown in mirror image



20180704161831

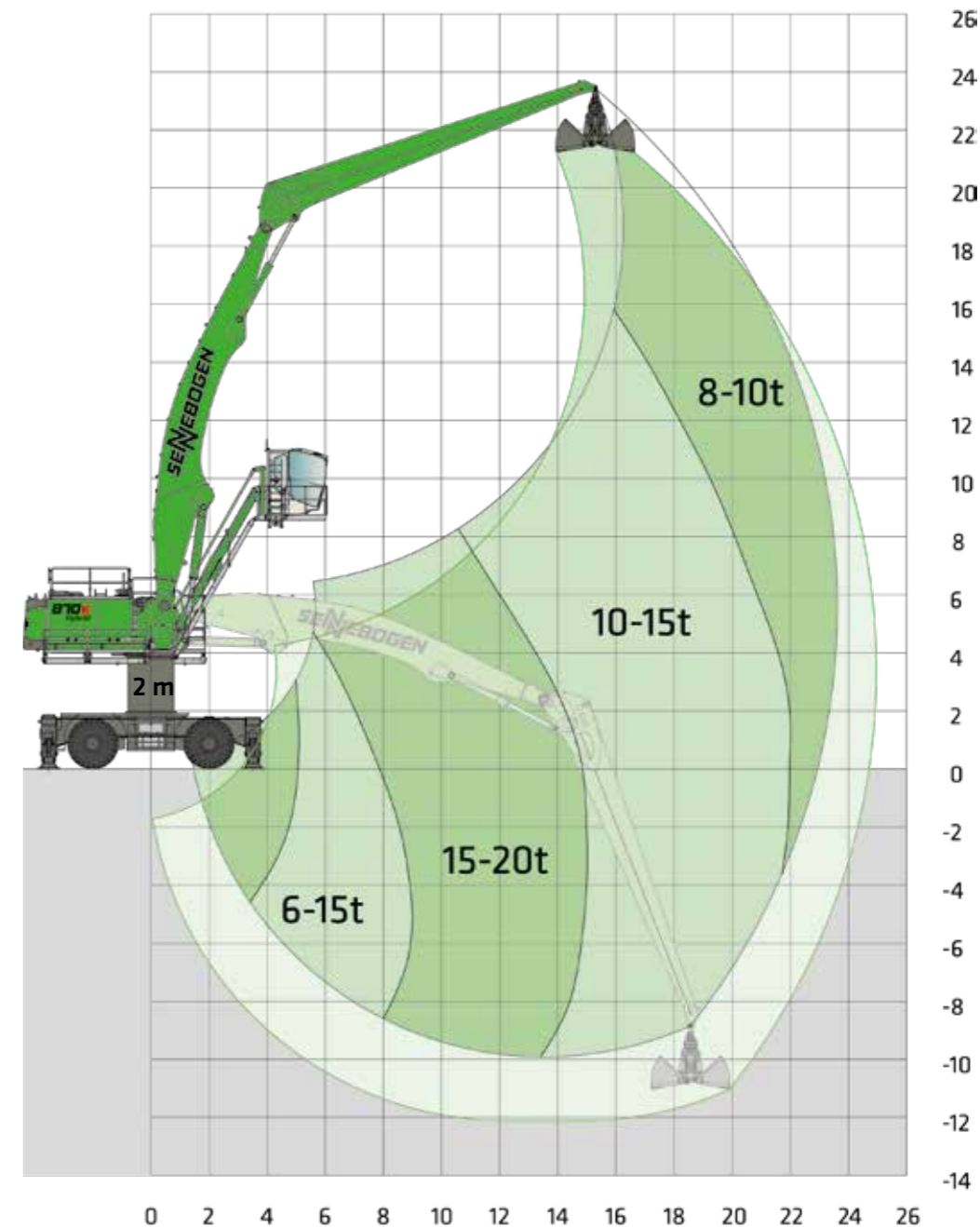
Notes:
 All load ratings are given in tons (t) brought to bear at the end of the stick, without tools on firm level ground. Working tools such as grab, magnet, load hook, etc. are included in the specified load ratings. The stated values are 75 % of the static tipping load or 87 % of the hydraulic lifting force according to ISO 10567 and apply at the required operating temperature in the Green Hybrid system. According to EU standard EN 474/5, hydraulic material handlers used for hoisting must be equipped with a pipe rupture safety device on lifting and stick cylinders and an overload warning device. The specified load ratings apply to maximum track width and 360° slewing.

LOAD RATINGS K20 PORT

The load ratings are given as information only. Please contact our regional sales partners or portdivision@sennebogen.de for a detailed project study.

 **MP80**
 **SKYLIFT 900 with MASTERCAB, hydraulically elevating (option)**
 **Pylon extension 2.0 m**

 **13.5 m boom**
 **12.3 m grab stick**



Machine shown in mirror image

20180704161733

Notes:
 All load ratings are given in tons (t) brought to bear at the end of the stick, without tools on firm level ground. Working tools such as grab, magnet, load hook, etc. are included in the specified load ratings. The stated values are 75 % of the static tipping load or 87 % of the hydraulic lifting force according to ISO 10567 and apply at the required operating temperature in the Green Hybrid system. According to EU standard EN 474/5, hydraulic material handlers used for hoisting must be equipped with a pipe rupture safety device on lifting and stick cylinders and an overload warning device. The specified load ratings apply to maximum track width and 360° slewing.

LOAD RATINGS K22

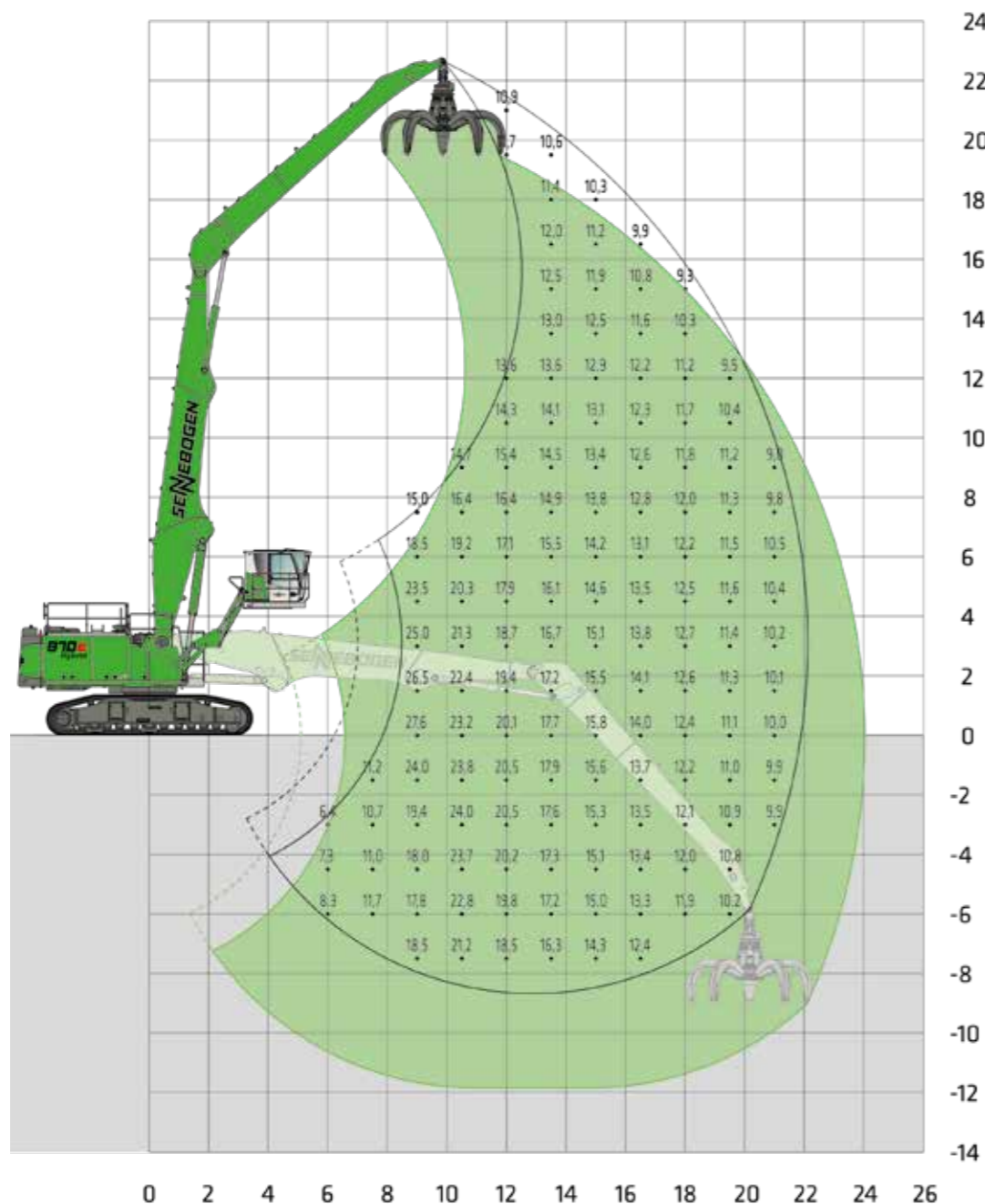
The load ratings are given as information only. Please contact our regional sales partners or portdivision@sennebogen.de for a detailed project study.



MAXCAB INDUSTRY
can be elevated by 3 m and moved forward 2.60 m



12.5 m boom
10.8 m grab stick



Machine shown in mirror image

20190731172354

Notes:
All load ratings are given in tons (t) brought to bear at the end of the stick, without tools on firm level ground. Working tools such as grab, magnet, load hook, etc. are included in the specified load ratings. The stated values are 75 % of the static tipping load or 87 % of the hydraulic lifting force according to ISO 10567 and apply at the required operating temperature in the Green Hybrid system. According to EU standard EN 474/5, hydraulic material handlers used for hoisting must be equipped with a pipe rupture safety device on lifting and stick cylinders and an overload warning device. The specified load ratings apply to maximum track width and 360° slewing.

LOAD RATINGS K25

The load ratings are given as information only. Please contact our regional sales partners or portdivision@sennebogen.de for a detailed project study.



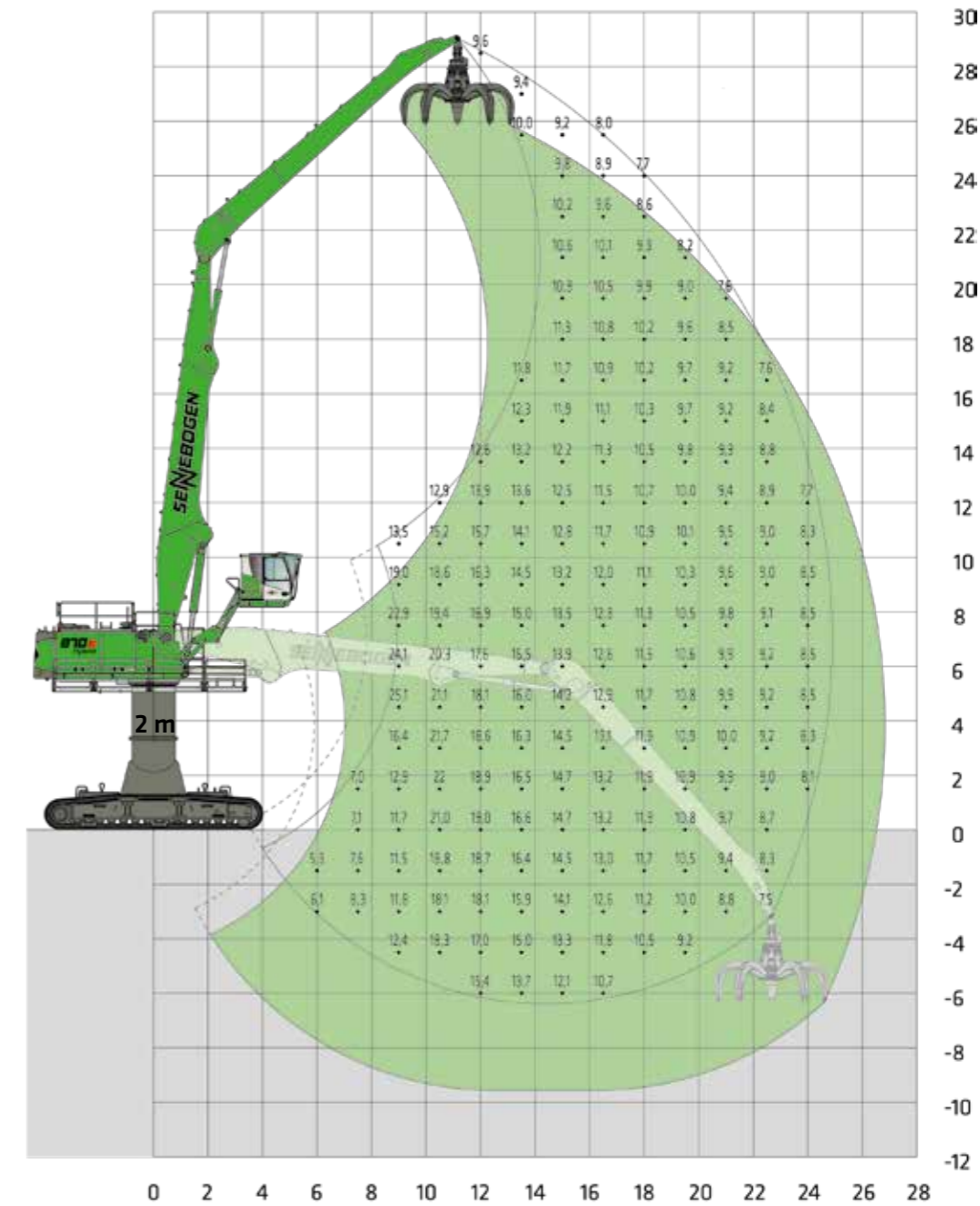
MAXCAB INDUSTRY
can be elevated by 3 m and moved forward 2.60 m



Pylon extension 2.0 m



14.0 m boom
12.3 m grab stick



Machine shown in mirror image

20211207160636

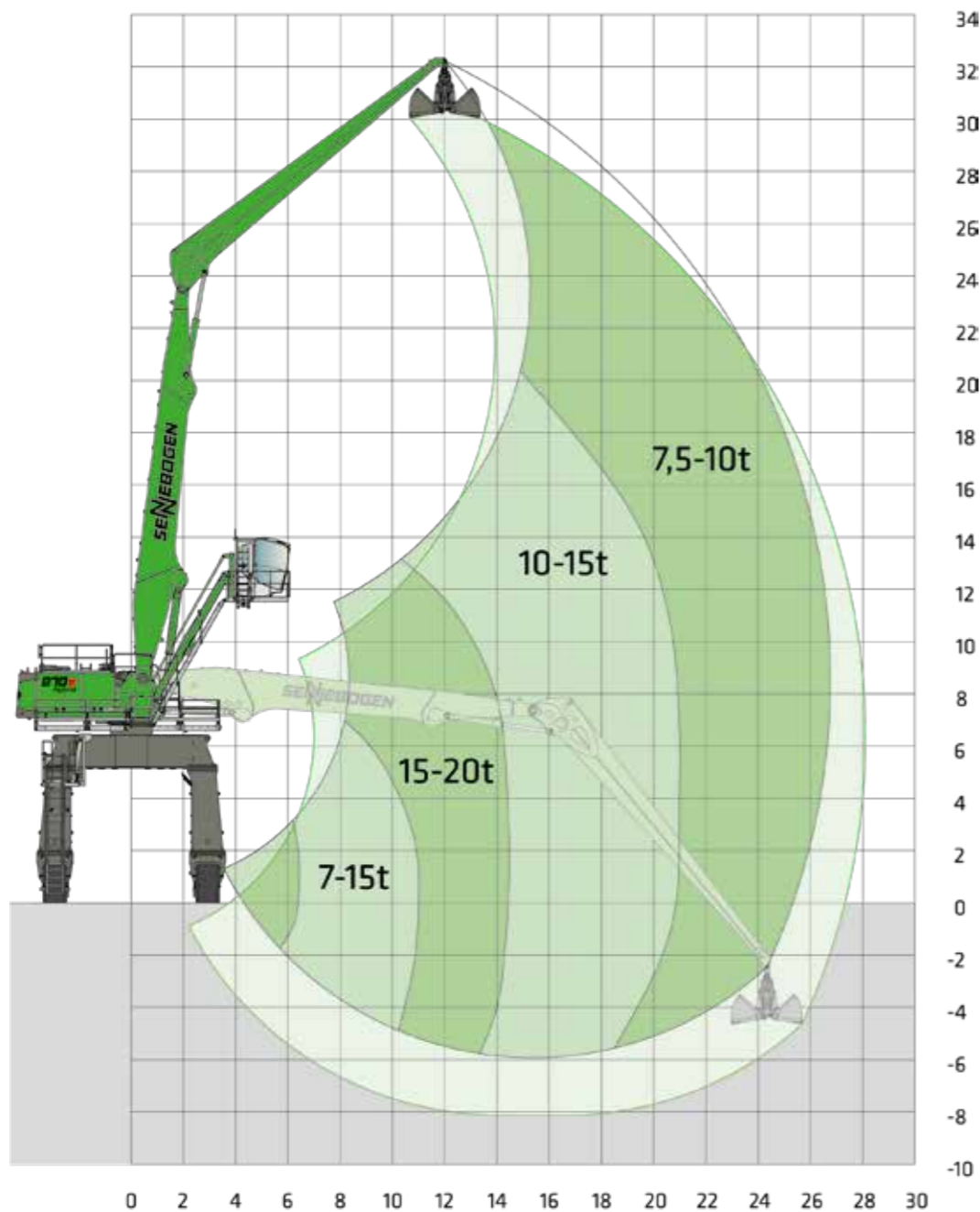
Notes:
All load ratings are given in tons (t) brought to bear at the end of the stick, without tools on firm level ground. Working tools such as grab, magnet, load hook, etc. are included in the specified load ratings. The stated values are 75 % of the static tipping load or 87 % of the hydraulic lifting force according to ISO 10567 and apply at the required operating temperature in the Green Hybrid system. According to EU standard EN 474/5, hydraulic material handlers used for hoisting must be equipped with a pipe rupture safety device on lifting and stick cylinders and an overload warning device. The specified load ratings apply to maximum track width and 360° slewing.

LOAD RATINGS K27 PORT

The load ratings are given as information only. Please contact our regional sales partners or portdivision@sennebogen.de for a detailed project study.

 P136/585  SKYLIFT 900 with MASTERCAB, hydraulically elevating (option)

 15 m boom
13.3 m grab stick



Machine shown in mirror image


20180704164442

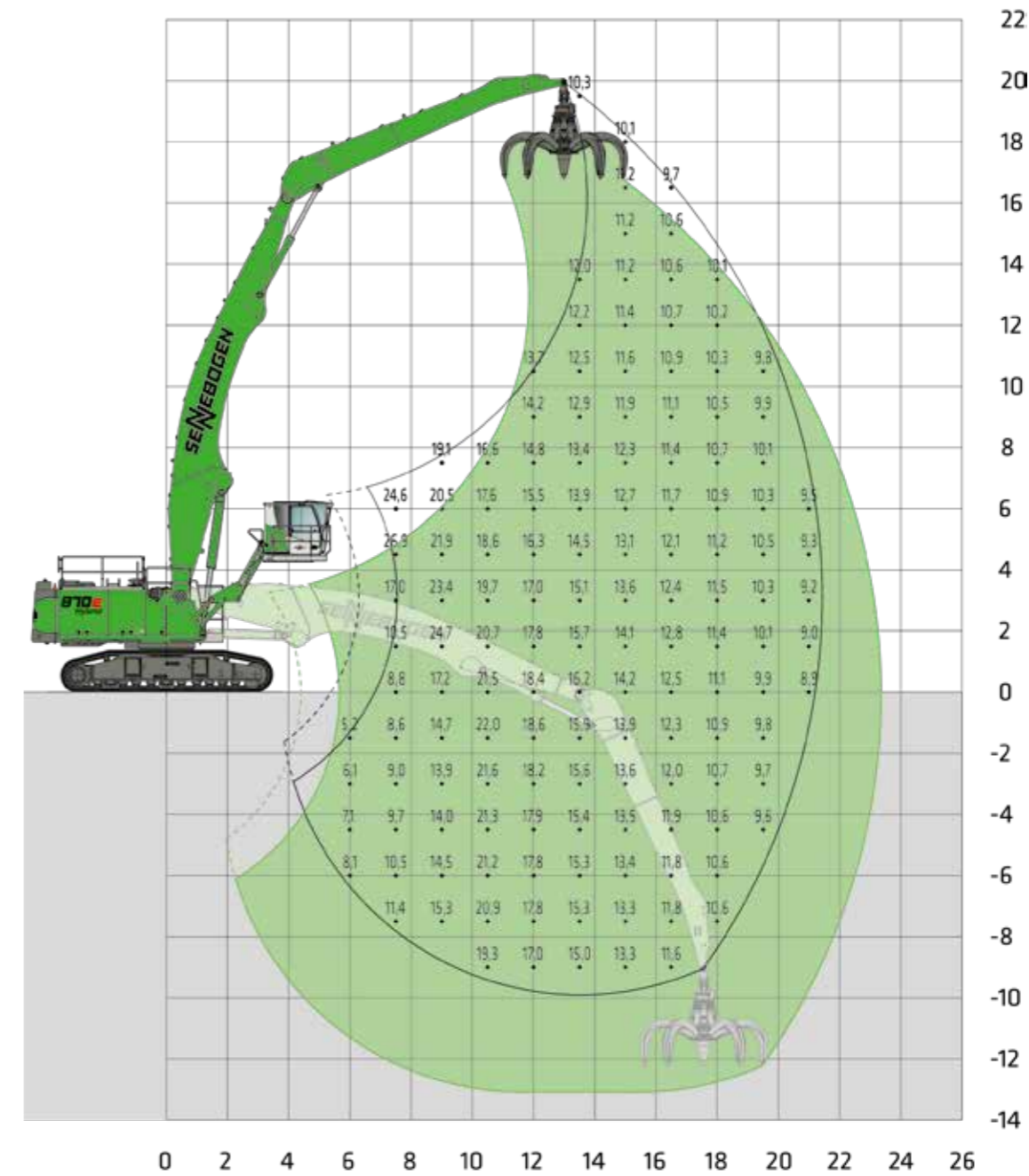
Notes:
All load ratings are given in tons (t) brought to bear at the end of the stick, without tools on firm level ground. Working tools such as grab, magnet, load hook, etc. are included in the specified load ratings. The stated values are 75 % of the static tipping load or 87 % of the hydraulic lifting force according to ISO 10567 and apply at the required operating temperature in the Green Hybrid system. According to EU standard EN 474/5, hydraulic material handlers used for hoisting must be equipped with a pipe rupture safety device on lifting and stick cylinders and an overload warning device. The specified load ratings apply to maximum track width and 360° slewing.

LOAD RATINGS B21

The load ratings are given as information only. Please contact our regional sales partners or portdivision@sennebogen.de for a detailed project study.

 R83/450  MAXCAB INDUSTRY can be elevated by 3 m and moved forward 2.60 m

 13.5 m boom
9.8 m grab stick





Machine shown in mirror image

20180910135124

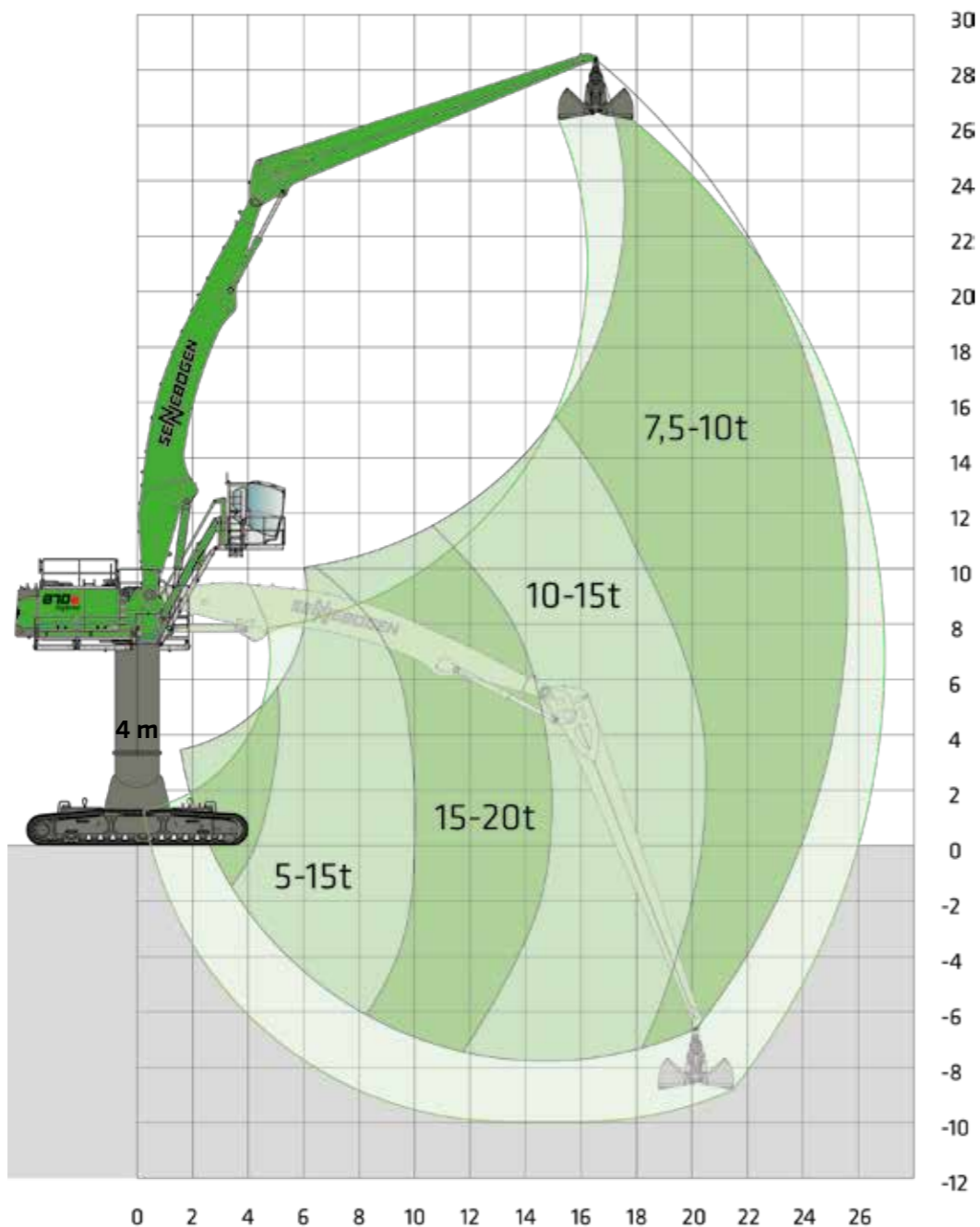
Notes:
All load ratings are given in tons (t) brought to bear at the end of the stick, without tools on firm level ground. Working tools such as grab, magnet, load hook, etc. are included in the specified load ratings. The stated values are 75 % of the static tipping load or 87 % of the hydraulic lifting force according to ISO 10567 and apply at the required operating temperature in the Green Hybrid system. According to EU standard EN 474/5, hydraulic material handlers used for hoisting must be equipped with a pipe rupture safety device on lifting and stick cylinders and an overload warning device. The specified load ratings apply to maximum track width and 360° slewing.

LOAD RATINGS B26 PORT

The load ratings are given as information only. Please contact our regional sales partners or portdivision@sennebogen.de for a detailed project study.

- 
R90/550
- 
**SKYLIFT 700 WITH MASTERCAB,
hydraulically elevating (option)**
- 
**Pylon extension
4.0 m**

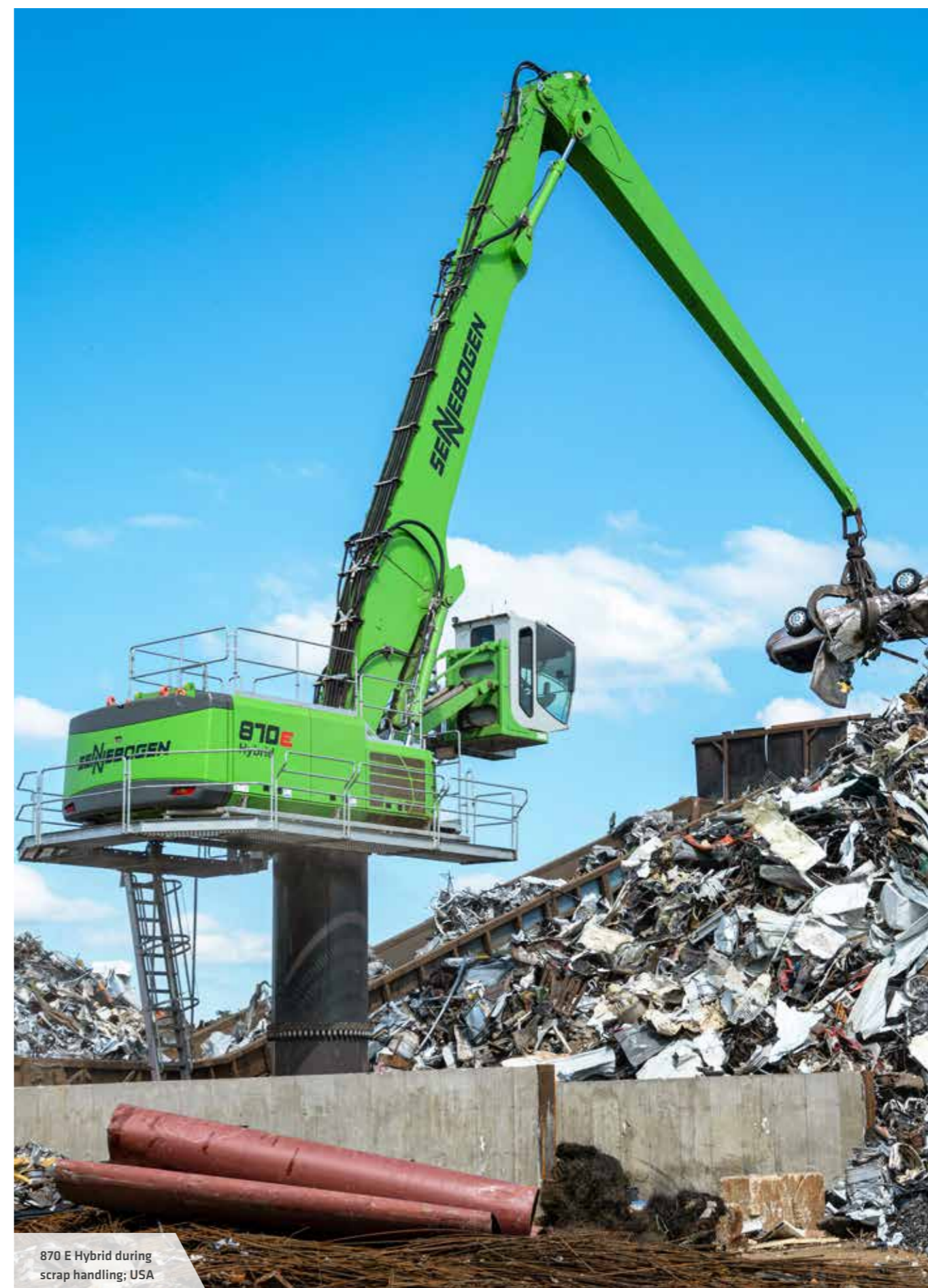
- 
14.7 m boom
- 
13.3 m grab stick



Machine shown in mirror image

20211207160821

Notes:
All load ratings are given in tons (t) brought to bear at the end of the stick, without tools on firm level ground. Working tools such as grab, magnet, load hook, etc. are included in the specified load ratings. The stated values are 75 % of the static tipping load or 87 % of the hydraulic lifting force according to ISO 10567 and apply at the required operating temperature in the Green Hybrid system. According to EU standard EN 474/5, hydraulic material handlers used for hoisting must be equipped with a pipe rupture safety device on lifting and stick cylinders and an overload warning device. The specified load ratings apply to maximum track width and 360° slewing.

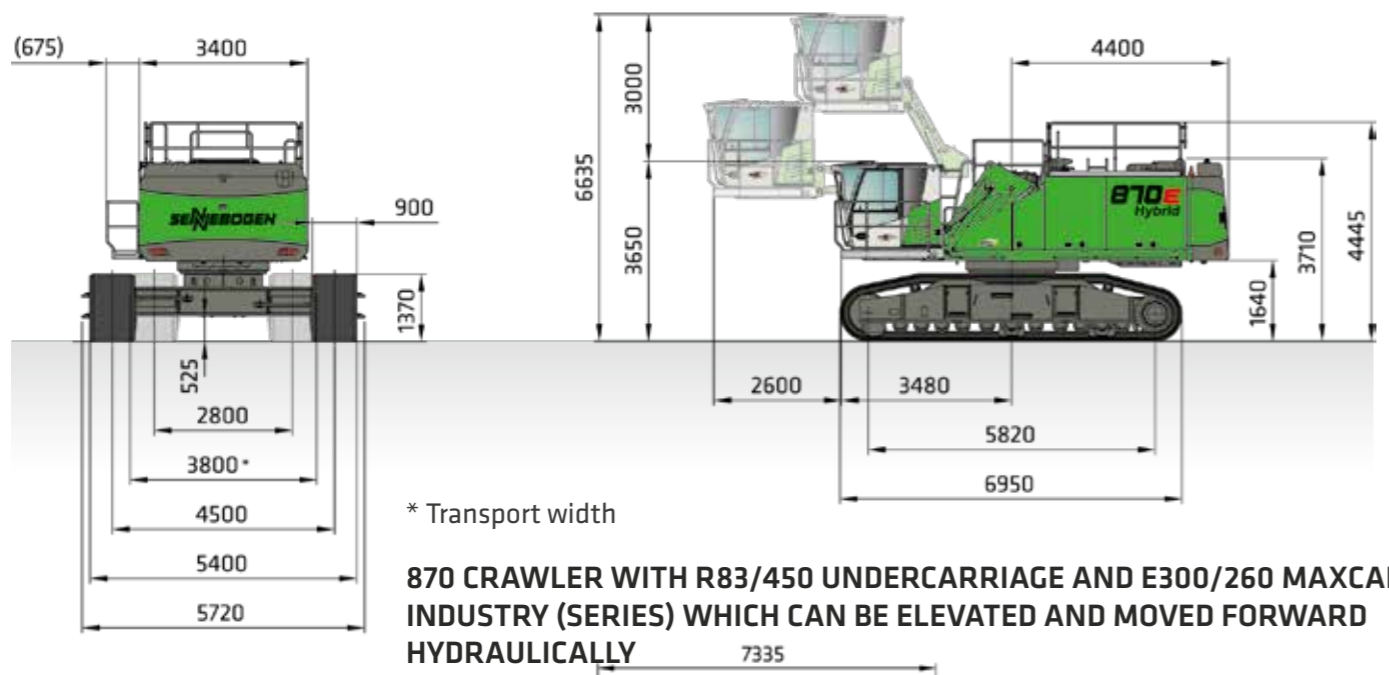


870 E Hybrid during scrap handling; USA

LOAD RATINGS

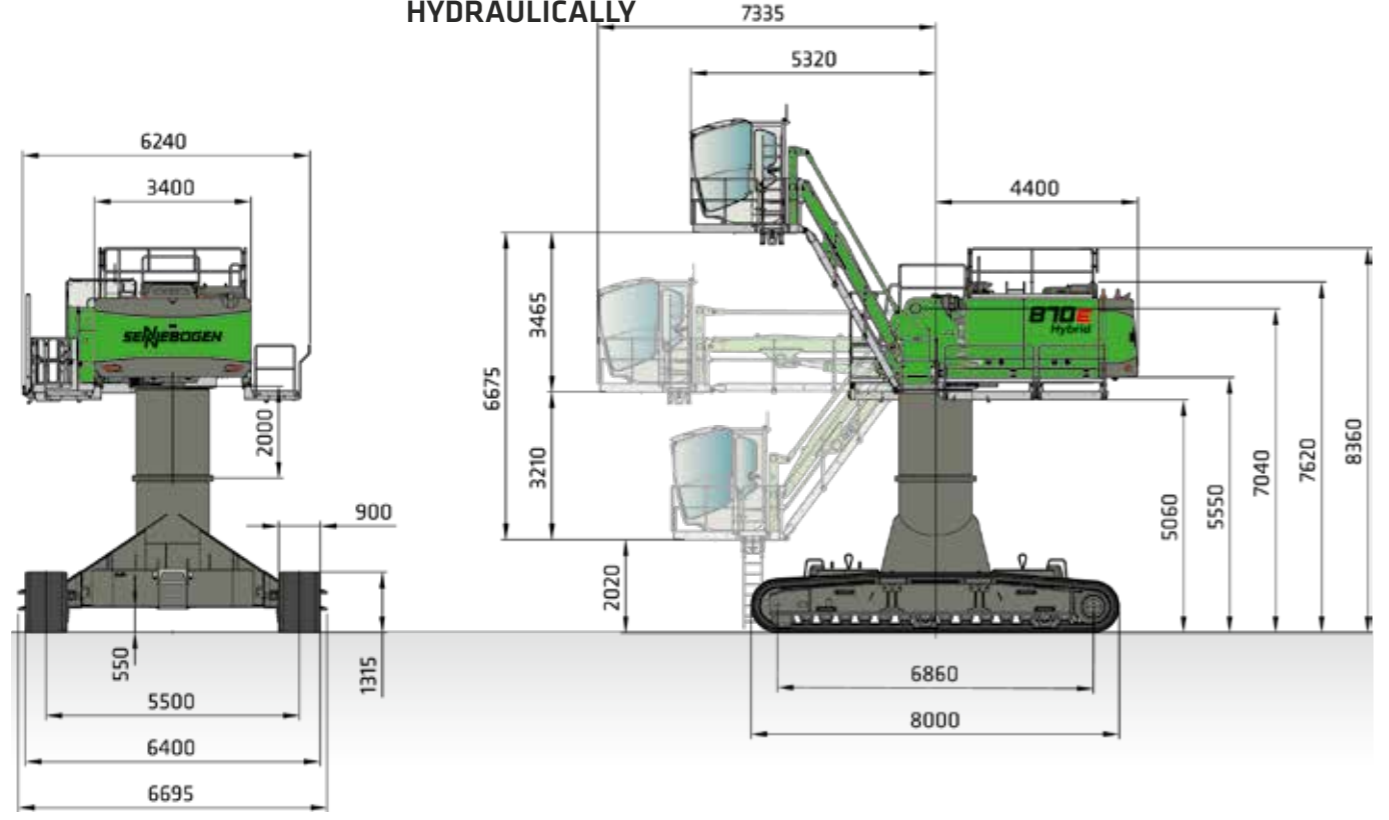
LOAD RATINGS

CRAWLER DIMENSIONS



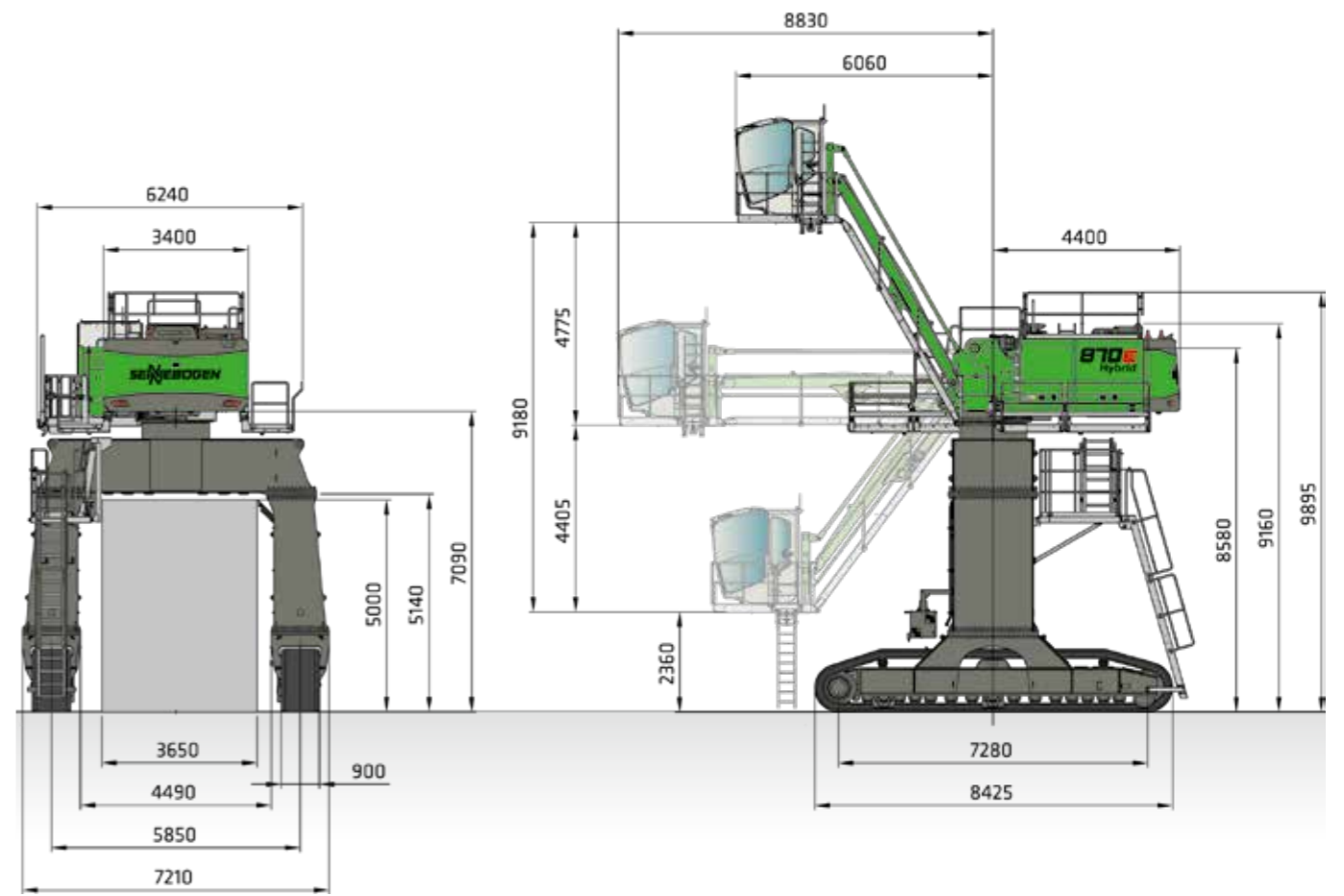
* Transport width

870 CRAWLER WITH R83/450 UNDERCARRIAGE AND E300/260 MAXCAB INDUSTRY (SERIES) WHICH CAN BE ELEVATED AND MOVED FORWARD HYDRAULICALLY



870 CRAWLER WITH UNDERCARRIAGE R90/550 AND SKYLIFT 700 WITH MASTERCAB, HYDRAULICALLY ELEVATING

CRAWLER DIMENSIONS

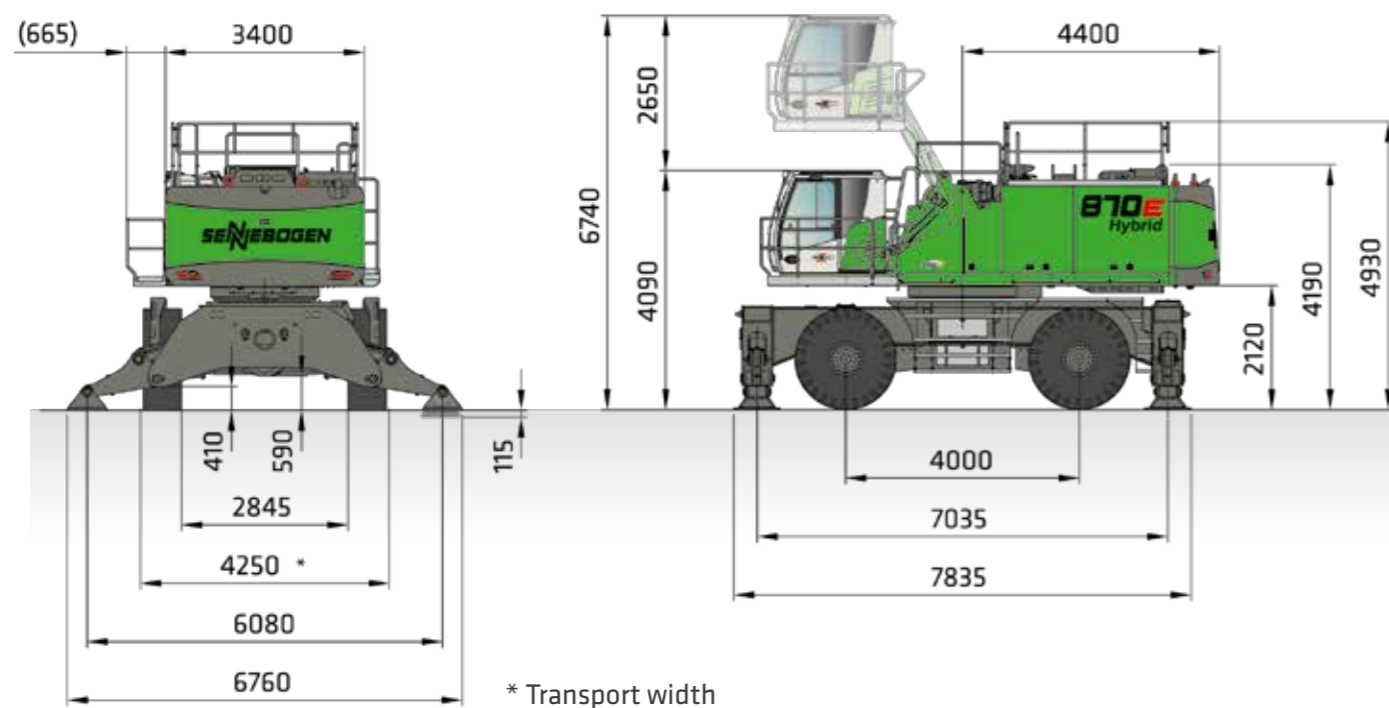


870 CRAWLER GANTRY WITH UNDERCARRIAGE P136/585 AND SKYLIFT 900 WITH MASTERCAB, HYDRAULICALLY ELEVATING

DIMENSIONS

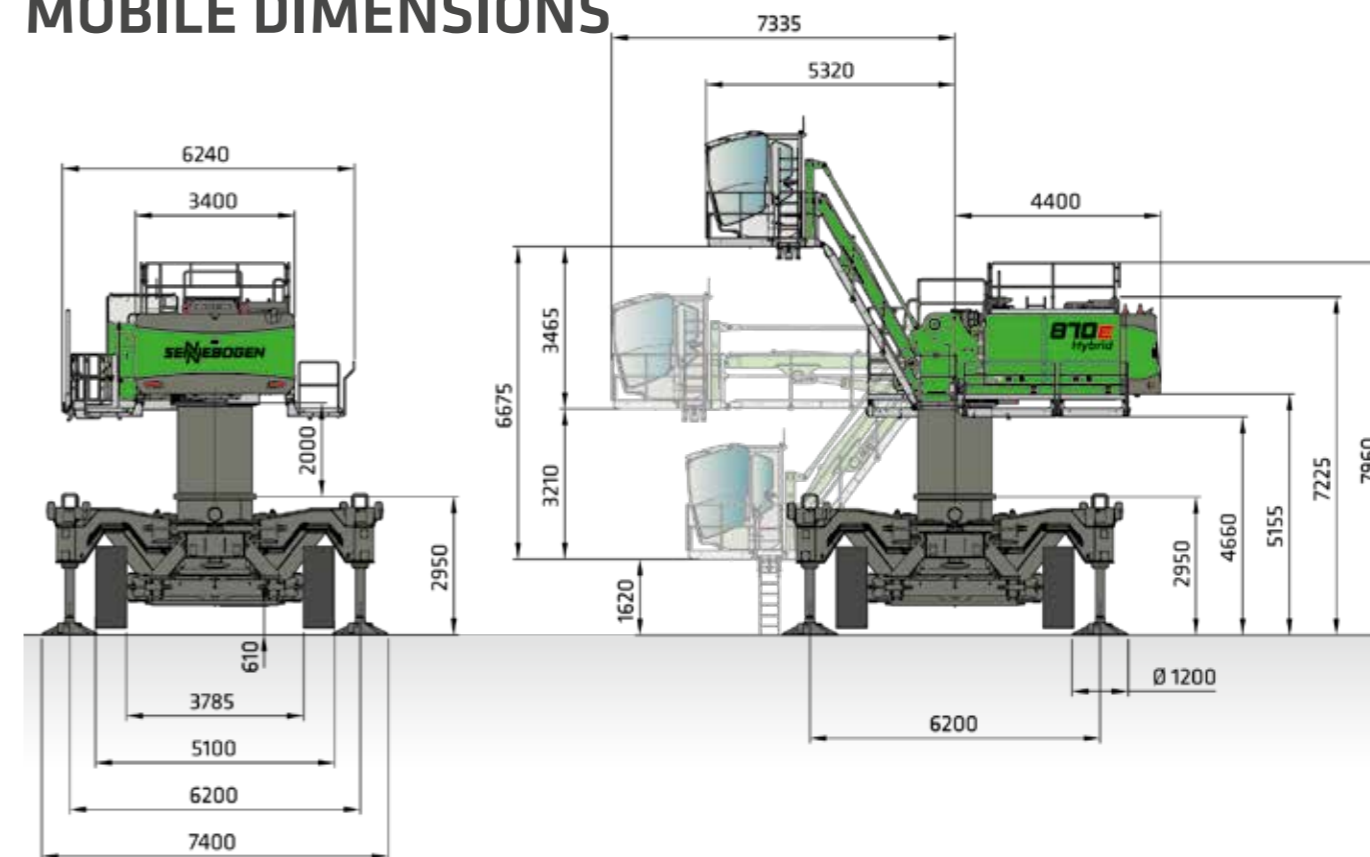
DIMENSIONS

MOBILE DIMENSIONS

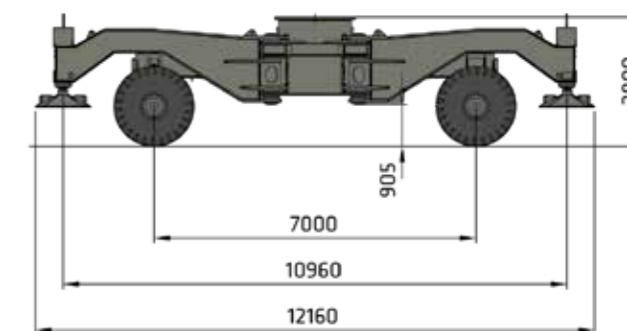
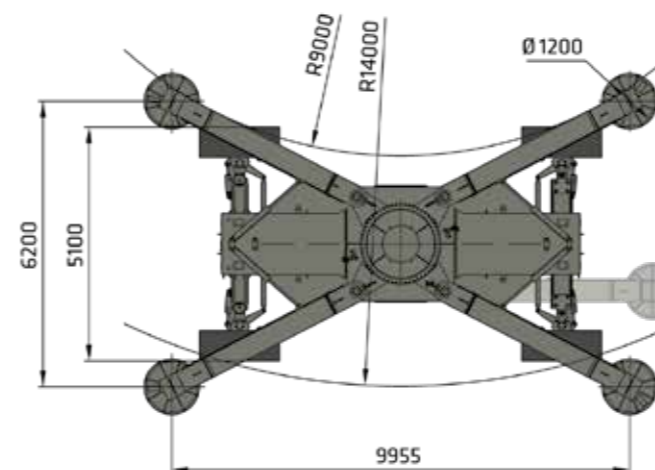


870 MOBILE WITH MP80 UNDERCARRIAGE AND E300/270 MAXCAB (SERIES) WHICH CAN BE ELEVATED AND MOVED FORWARD HYDRAULICALLY

MOBILE DIMENSIONS

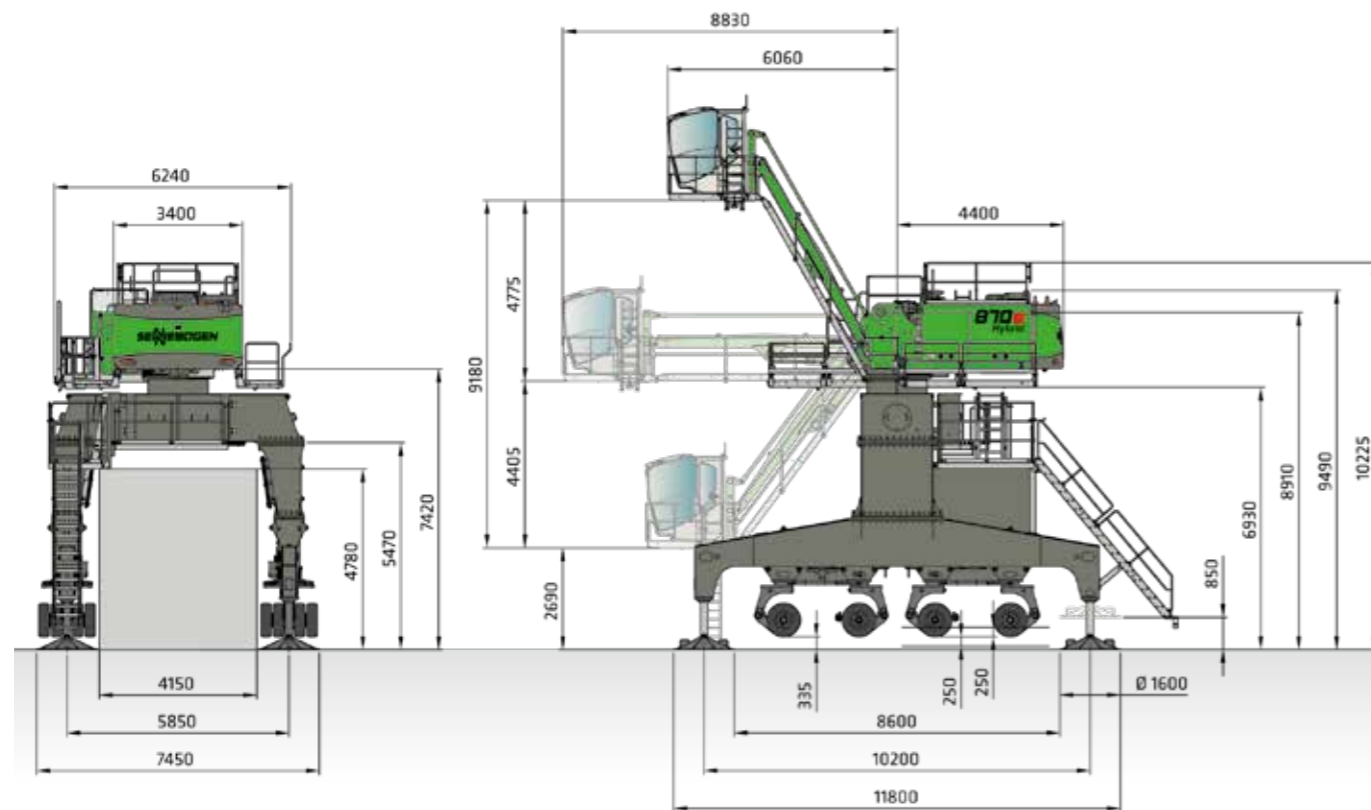


870 MOBILE WITH MS120 UNDERCARRIAGE AND HYDRAULICALLY ELEVATING SKYLIFT 700 CAB ELEVATION AND MASTERCAB

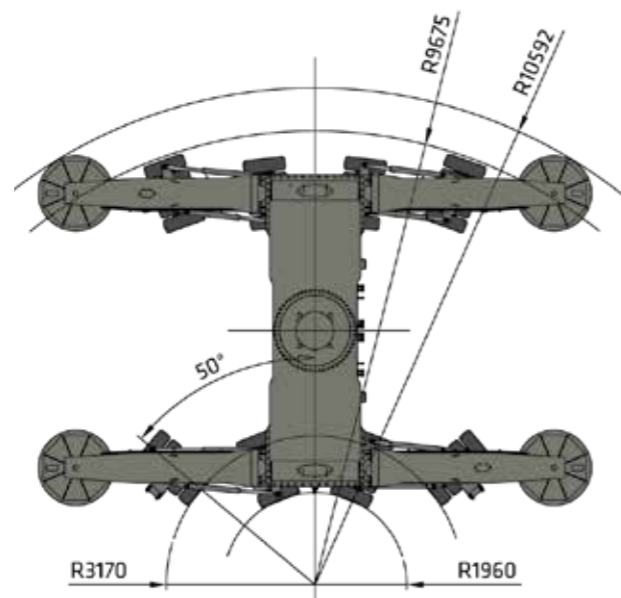


MOBILE UNDERCARRIAGE MS120 SOLID RUBBER TIRES 26.5-25

MOBILE GANTRY DIMENSIONS

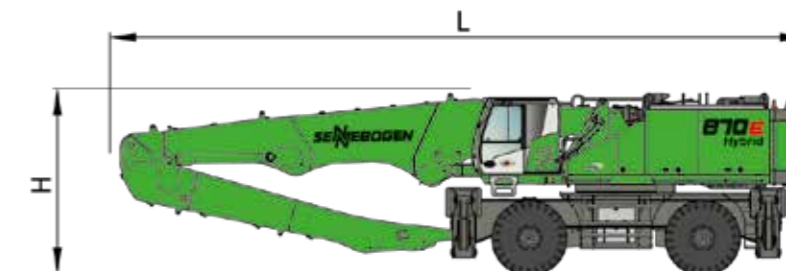


870 MOBILE GANTRY WITH PM130/585 UNDERCARRIAGE AND HYDRAULICALLY ELEVATING SKYLIFT 900 CAB ELEVATION AND MASTERCAB



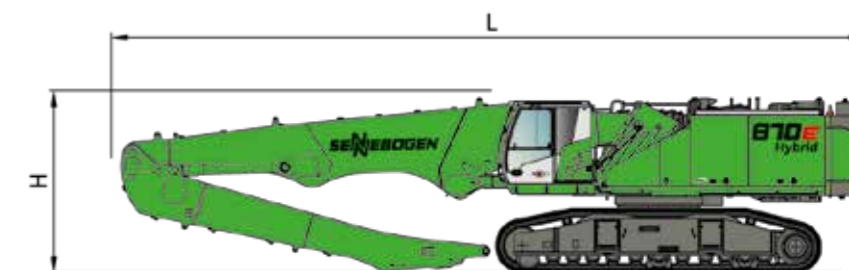
TURNING RADIUS PM130/585

TRANSPORT DIMENSIONS MOBILE/CRAWLER



870 E TRANSPORT DIMENSIONS MP80E E270				
	COMPACT BOOM	GRAB STICK	TRANSPORT LENGTH (L)	TRANSPORT HEIGHT (H)
K18	10.8 m	7.8 m	16.0 m	4.2 m
K20	11.8 m	8.8 m	17.0 m	4.2 m
B24 Port	13.5 m Banana	12.3 m Port	18.5 m	4.2 m*

* = stick removed



870 E TRANSPORT DIMENSIONS R83/450				
	COMPACT BOOM	GRAB STICK	TRANSPORT LENGTH (L)	TRANSPORT HEIGHT (H)
K18	10.8 m	7.8 m	16.0 m	4.1 m
K20	11.8 m	8.8 m	17.0 m	4.1 m
B21	13.5 m Banana	9.8 m	18.5 m	4.1 m*
K22	12.5 m	10.8 m	18 m	4.1 m

* = stick removed

870 E HYBRID
WITH K27 PORT
EQUIPMENT FOR
MAXIMUM RANGE
WITH HIGH LOAD
CAPACITY



870 E Hybrid with crawler pylon undercarriage; USA



SENNEBOGEN ACADEMY

Increase your knowledge because success is based on knowledge. In the SENNEBOGEN ACADEMY we place great importance on ensuring it flows powerfully.
 → www.sennebogen-academy.com



SERVICE AND MAINTENANCE

Comprehensive customer service. And supply of spare parts. Service is a TOP priority for us.
 → www.sennebogen.com/customer-service



SENtrack

Efficient fleet management with SENtrack: Use information that would otherwise stay hidden and increase your efficiency.
 → www.sennebogen.com/sentrack



RENTAL & USED

Discover the unique range of rental machines available from SENNEBOGEN Rental & Used. Find your rental machine here:
 → www.sennebogen-rental-used.com

JOIN OUR OPERATORS' CLUB

The spotlight is on you and your machine! We focus on exclusive information, sharing experiences with other SENNEBOGEN operators as well as fun and enthusiasm.

Find out about all the benefits here → www.sennebogen.com/operators club



MOVE BIG THINGS - WITH US!



over **71** years of experience

100% family company

over **2200** experienced specialists worldwide

5 production plants in Germany

over **180** sales and service partners worldwide

27 different material handlers



Telehandler 4-5.5 t	Balancer 130-300 t	Material handler 17-420 t	Duty cycle crane 13.5-300 t	Crawler crane 50-300 t	Telescopic crane 16-130 t	Port crane 300 t
------------------------	-----------------------	------------------------------	--------------------------------	---------------------------	------------------------------	---------------------

870E | Hybrid

Order no. 195295
870-E-082310

This catalog describes machine models, the scope of equipment of individual models, and configuration options (standard equipment and optional equipment) of the machines delivered by SENNEBOGEN Maschinenfabrik GmbH. Machine illustrations may contain optional and supplementary equipment. Actual equipment may vary depending on the country to which the machines are delivered, especially in regard to standard and optional equipment. All product designations used may be trademarks of SENNEBOGEN Maschinenfabrik GmbH or other supplying companies, and any use by third parties for their own purposes may violate the rights of the owners.

Please contact your local SENNEBOGEN sales partner for information concerning the equipment variants offered. Requested performance characteristics are only binding if they are expressly stipulated upon conclusion of the contract. Delivery options and technical features are subject to change. All information is supplied without liability. Equipment is subject to change, and rights of advancement are reserved. © SENNEBOGEN Maschinenfabrik GmbH, Straubing, Germany. Reproduction in whole or in part only with written consent of SENNEBOGEN Maschinenfabrik GmbH, Straubing, Germany.

SENNEBOGEN
Maschinenfabrik GmbH
Hebbelstraße 30
94315 Straubing, Germany

 www.sennebogen.com

MOVE BIG THINGS

SALES SENNEBOGEN

Green Line Sales

 +49 (0) 9421 / 540 - 146

 materialhandling@sennebogen.de

SPARE PARTS CENTER

Spare parts orders

 spareparts@sennebogen.de

AFTER SALES

Technical support

 service@sennebogen.de

