

MR-6

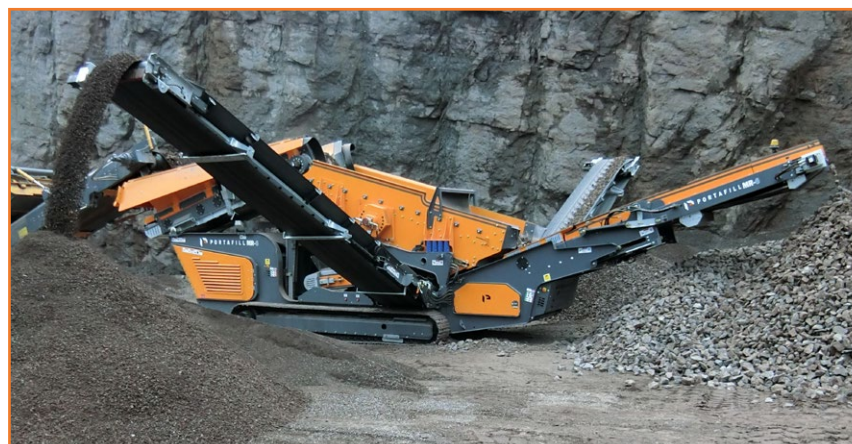
RECLAIMING SCREENS

- 1 Engine**
Deutz TD2.9L4
EU Stage IIIB, EPA Tier 4
EU Stage V
- 2 Under Screen Conveyor**
1000mm (40") Wide Belt
Variable Speed
- 3 Oversize Conveyor**
1000mm (40") Wide
Discharge Height
3200mm (10'6")
- 4 Wing Conveyors**
800mm (32") Wide
Discharge Height
3775mm (12'4")
- 5 Overall Screen Box**
Bolted 2 Bearing Screen
3900mm (12'10") x 1300mm (4'3")
Side or End Tensioned Top Deck
- 6 Feeder / Hopper**
1000mm (40") Wide Belt
Variable Speed
Volume 7 cubic meters (9.1 cu yards) Heaped
- 7 Feeder / Hopper**
Feed Length 4480mm (14'8")
Feed Height 3330mm (10'11")



FEATURES

- Hydraulic folding hopper sides for loading
- Side or end tensioned top deck for efficient screening
- Folding under screen conveyor for quick mesh changes
- Quick 2in1 oversize conveyor change
- Easy fold for compact transport dimensions
- Super accessible engine area for service and maintenance



TRANSPORT

Width	2.5m (8'4")
Length	10.6m (35")
Height	3m (9'9")

Weight	19,000kgs*
APPROX.	41,800lbs*

WORKING

Width	13.9m (45'9")
Length	12.9m (42'6")
Height	3.3m (10'11")

Patent Applied No. 18162051.9
& US 62/643,527