

PK 88002 EH

THE POWER LINK PLUS ENABLES OPERATIONS WITHIN CONFINED SPACES

LIFETIME EXCELLENCE



OPERATOR-FRIENDLY PRODUCT DESIGN

- High value retention due to coating technology
- Additional applications due to Power Link Plus
- Maximum utilisation of the working range due to HPSC
- More lifting power due to E-HPLS





FIRST-RATE IN DESIGN AND PERFORMANCE



Coating technology

Top quality surface protection at a glance

The KTL coating lays the foundation for a perfect surface protection. Afterwards the components are either coated in the powder-coating facility or are finished with a two-components-topcoat. High value retention and excellent corrosion protection for the whole life of a crane.



Power Link Plus

High variety of uses

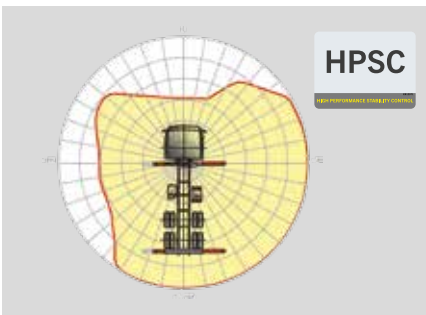
With the 15-degree reverse linkage system, you can reach through low door openings and also work inside buildings. Heavy crane work – even in difficult conditions.



Low-maintenance extension system

Reduces service time

With sliding elements made of synthetic material and the high-quality KTL coating, this boom system significantly simplifies service performed by the operator. This saves time and money – and protects the environment.



HPSC

Maximum utilisation of the working range

The variable stabiliser positioning of the High Performance Stability Control System makes it possible to utilise the lifting capacity to the maximum. It enables working within tight spaces.



High Speed Extension

For efficient assignments

The High Speed Extension speeds up the extension boom system. Crane works faster and more efficiently.



Radio remote control

Dialogue with the operator

PALFINGER radio remote controls are equipped with linear lever or cross lever and provide the greatest possible comfort for the operator. All EH models with LED-Display inform the crane operator about the different operating conditions.



Power Link cable winch

More comfort in cable winch operation

Characterised by low installation height, it is ideal for working inside buildings and transports with the crane boom unfolded. The Comfort Cable Routing reduces set-up times to a minimum.



Functional design

Practical and attractive

Robust plastic covers protect crane parts against dirt and damage. Better appearance and increased operational comfort – during the entire lifetime.



Continuous slewing system

Unrestricted movement

More efficient in operation due to faster loading cycles, since the crane can be slewed over a shorter distance. The crane works more efficiently and faster.

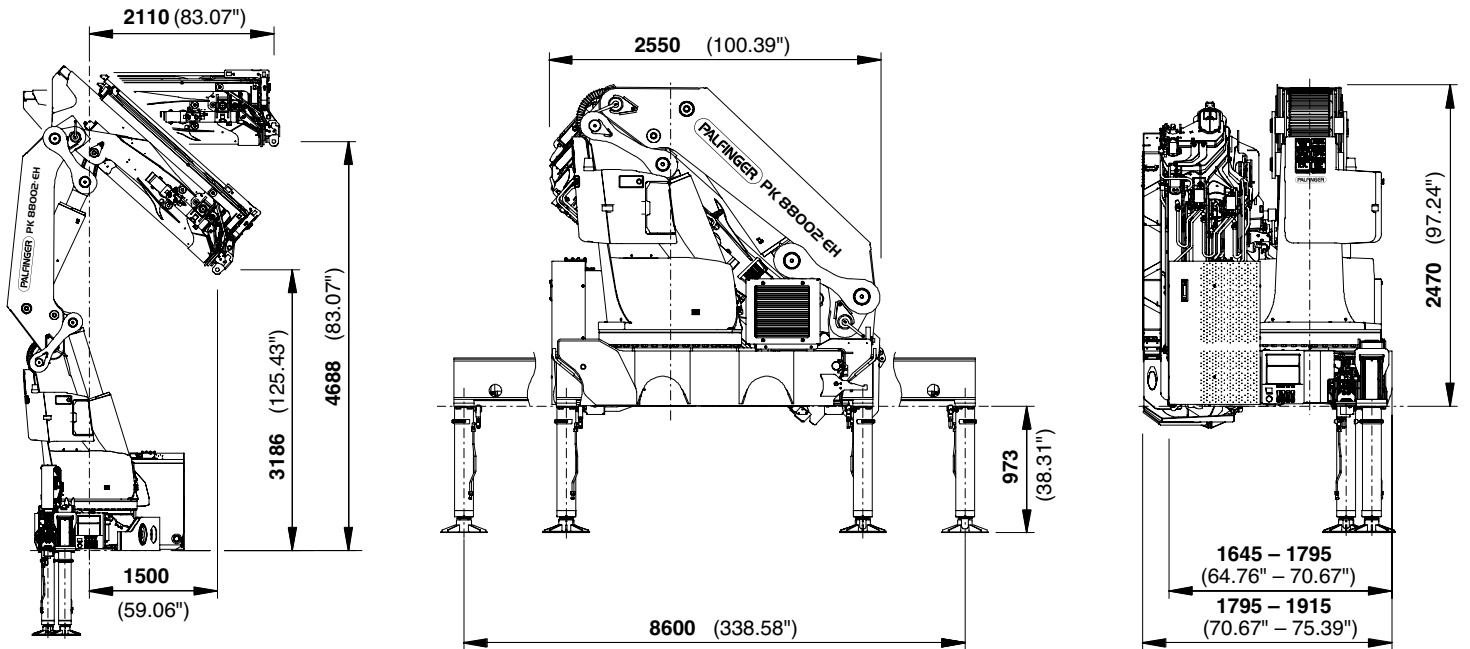
PERFECT DIMENSIONS

Technical specifications EN 12999 HC1 HD4/B3

Max. lifting moment	81,6 mt/800,7 kNm	590520 ft.lbs
Max. lifting capacity	30000 kg/294,3 kN	66200 lbs
Max. hydraulic outreach	22,5 m	73' 10"
Max. manual outreach	25,0 m	82' 0"
Max. outreach (with fly-jib)	32,4 m	106' 4"
Slewing angle	endless	
Slewing torque	7,7 mt/76,0 kNm	56050 ft.lbs
Stabiliser spread (std.)	8,6 m	28' 3"

Fitting space required (std.)	min. 1,65 m	5' 5"
	max. 1,92 m	6' 3"
Width folded	2,55 m	8' 4"
Max. operating pressure	365 bar	5293 psi
Recommended pump capacity	from 110 l/min	29,1 US gal./min
	to 130 l/min	34,3 US gal./min
Dead weight (std.)	6780 kg	14950 lbs

DIMENSIONS

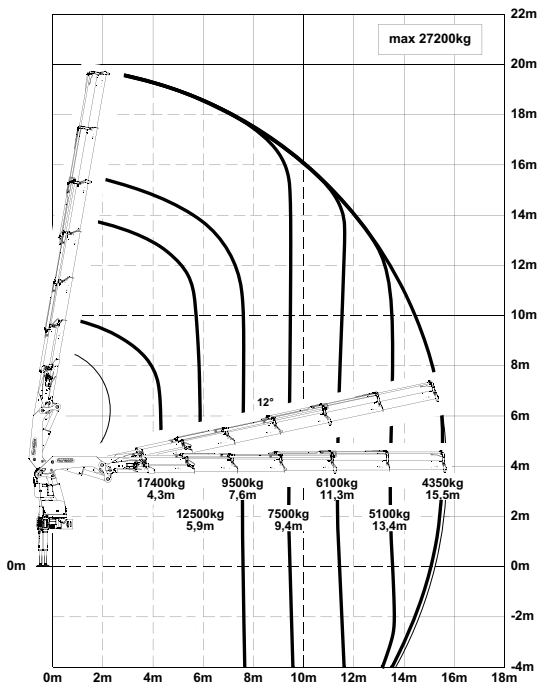


PK 88002 EH

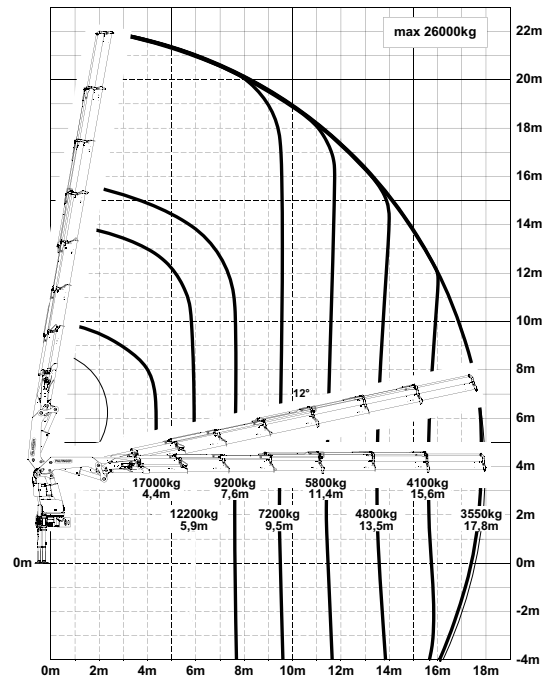
HIGH PERFORMANCE

Perfect for high outreaches.

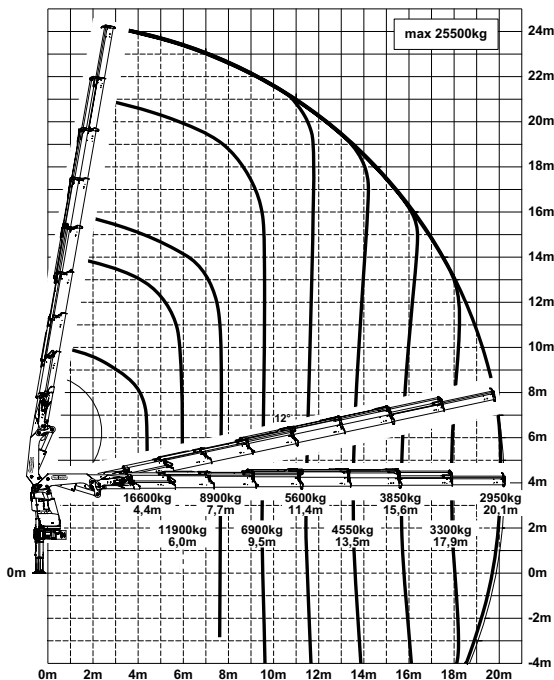
E



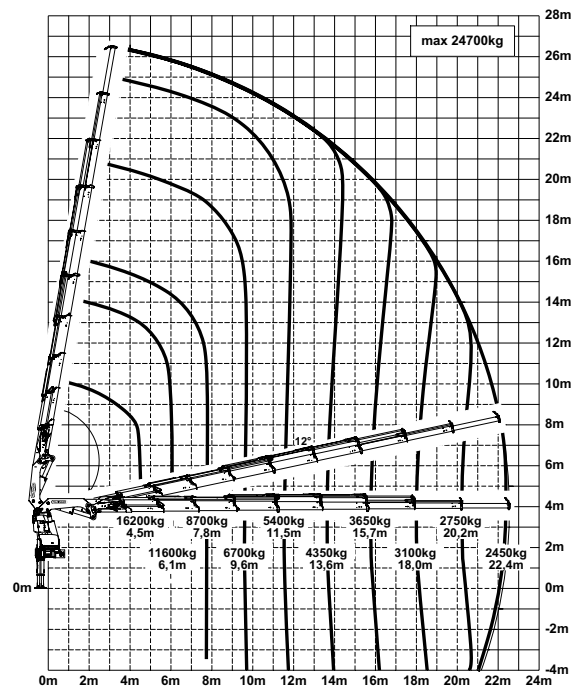
F



G



H



The outreaches stated are with a boom angle of 20° and are therefore not the maximum.

Lifting capacities

max.		30000 kg	66200 lbs	A
4.0 m	13 ft	19600 kg	43300 lbs	
5.6 m	18 ft	14300 kg	31600 lbs	
7.3 m	24 ft	11100 kg	24500 lbs	

max.		29800 kg	65700 lbs	B
4.1 m	13 ft	19200 kg	42300 lbs	
5.6 m	18 ft	13900 kg	30700 lbs	
7.3 m	24 ft	10700 kg	23700 lbs	
9.1 m	30 ft	8600 kg	19000 lbs	

max.		29000 kg	64,000 lbs	C
4.1 m	14 ft	18600 kg	40,900 lbs	
5.7 m	19 ft	13500 kg	29,600 lbs	
7.4 m	24 ft	10300 kg	22,700 lbs	
9.2 m	30 ft	8200 kg	18,100 lbs	
11.1 m	37 ft	6800 kg	15,000 lbs	

max.		27800 kg	61300 lbs	D
4.2 m	14 ft	17900 kg	39500 lbs	
5.8 m	19 ft	13000 kg	28600 lbs	
7.5 m	25 ft	9900 kg	21800 lbs	
9.3 m	31 ft	7900 kg	17300 lbs	
11.2 m	37 ft	6400 kg	14200 lbs	
13.3 m	44 ft	5400 kg	11900 lbs	

max.		27200 kg	60000 lbs	E
4.3 m	14 ft	17400 kg	38200 lbs	
5.9 m	19 ft	12500 kg	27600 lbs	
7.6 m	25 ft	9500 kg	20900 lbs	
9.4 m	31 ft	7500 kg	16500 lbs	
11.3 m	37 ft	6100 kg	13400 lbs	
13.4 m	44 ft	5100 kg	11200 lbs	
15.5 m	51 ft	4350 kg	9600 lbs	

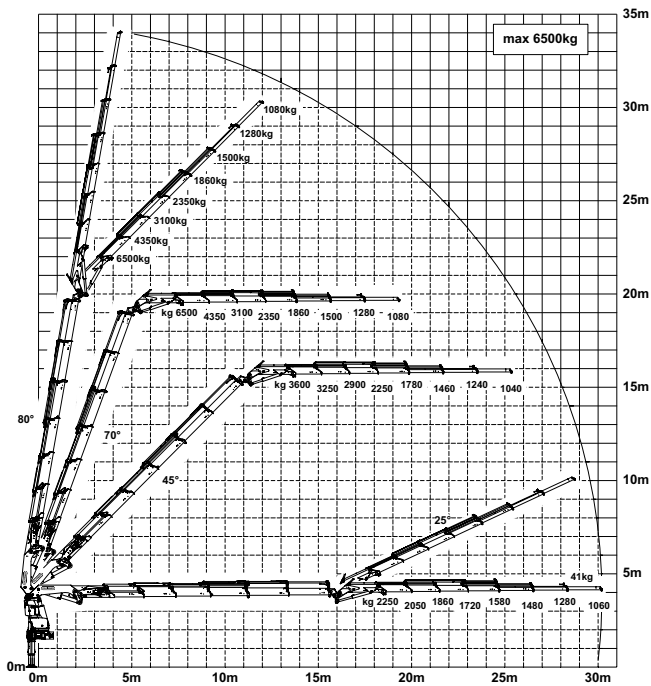
max.		26000 kg	57300 lbs	F
4.4 m	14 ft	17000 kg	37400 lbs	
5.9 m	19 ft	12200 kg	26900 lbs	
7.6 m	25 ft	9200 kg	20300 lbs	
9.5 m	31 ft	7200 kg	15800 lbs	
11.4 m	37 ft	5800 kg	12800 lbs	
13.5 m	44 ft	4800 kg	10600 lbs	
15.6 m	51 ft	4100 kg	9000 lbs	
17.8 m	58 ft	3550 kg	7800 lbs	

max.		25500 kg	56200 lbs	G
4.4 m	14 ft	16600 kg	36700 lbs	
6.0 m	20 ft	11900 kg	26200 lbs	
7.7 m	25 ft	8900 kg	19700 lbs	
9.5 m	31 ft	6900 kg	15300 lbs	
11.4 m	37 ft	5600 kg	12200 lbs	
13.5 m	44 ft	4550 kg	10000 lbs	
15.6 m	51 ft	3850 kg	8500 lbs	
17.9 m	59 ft	3300 kg	7300 lbs	
20.1 m	66 ft	2950 kg	6500 lbs	

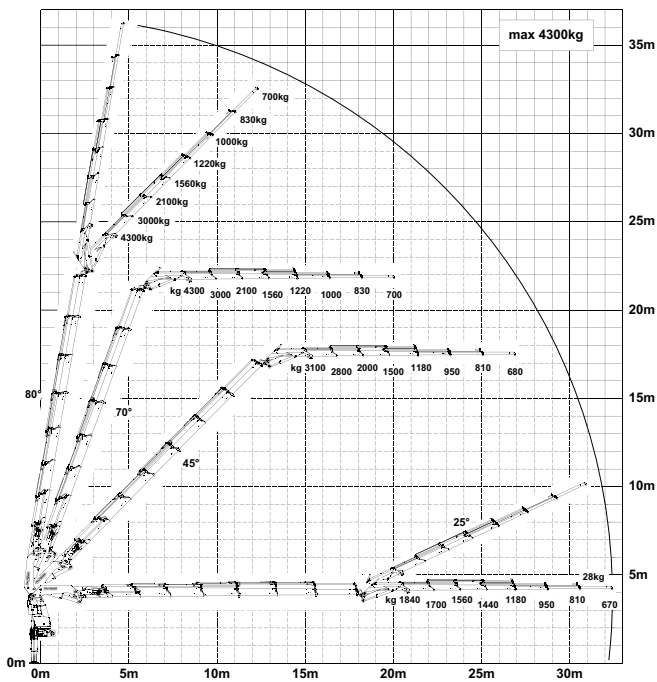
max.		24700 kg	54500 lbs	H
4.5 m	15 ft	16200 kg	35600 lbs	
6.1 m	20 ft	11600 kg	25500 lbs	
7.8 m	25 ft	8700 kg	19100 lbs	
9.6 m	31 ft	6700 kg	14800 lbs	
11.5 m	38 ft	5400 kg	11800 lbs	
13.6 m	45 ft	4350 kg	9600 lbs	
15.7 m	52 ft	3650 kg	8000 lbs	
18.0 m	59 ft	3100 kg	6900 lbs	
20.2 m	66 ft	2750 kg	6000 lbs	
22.4 m	73 ft	2450 kg	5400 lbs	
24.9 m*	82 ft	2100 kg	4650 lbs	

*mechanical extension

E PJ170E JV1



F PJ125E JV1





KP-HPK88002EHM2+EN

Cranes shown in the leaflet are partially optional equipped and do not always correspond to the standard version. Country-specific regulations must be observed. Dimensions may vary. Subject to technical changes, errors and translation mistakes.