

P 130 A LOW SMART

**RELIABILITY,
SAFETY AND HIGH
PERFORMANCE ON
ANY TERRAIN**

LIFETIME EXCELLENCE



STRENGTHS

- Installed on pick up 4x4 vehicle , make easy to reach difficult-to access areas.
- Convenience in driving even in rough terrain condition
- Availability on 2 different chassis 3,2 t and 3,5 t
- The version on 3,5 t allows to install more options and to transport more tools.
- Full hydraulic operation Easy to use and quickly to reach the maximum performance with the maximum rated load
- Ergonomic and compact design
- Optimized working mode in a circular working space

STANDARD

- 12V socket on the basket
- 230 V/16A or 110 V/16A socket on the basket
- Air/water line from the column to the basket
- Double access to the basket from the ground
- Electric hour meter (truck dashboard)
- Emergency hand pump
- Emergency stop buttons
- Engine on/off control from the basket
- Fittings for safety belts on basket
- Flanged lock valves on all cylinders
- Magnetic rotating lamp for the vehicle's cab
- Manual emergency descent controls
- Max. pressure valves on hydraulic system
- Outrigger/boom interlock
- Planarity check device
- Set of 4 spreader plates with proper housing on the chassis
- Test button for signal lights on panels

OPTION










- 12V emergency electric pump
- Brushes kit on telescopic boom
- Customized boom painting (1 colour)
- Cage rotation 90°+90°
- Fiberglass basket (replacement for aluminium cage)
- Flashing light at turntable
- Folding Side bordering h 200mm
- Inclinator with audio alarm signal and signal lights relating to aerial work conditions
- Insulation 1000V including fiberglass basket (replacement for aluminium cage)
- Set of 4 spreader plates with proper housing on the chassis
- Truck handling fee SMART
- Working light 60W for aluminium cage

CHASSIS

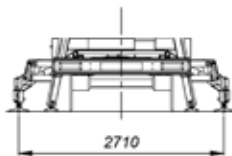
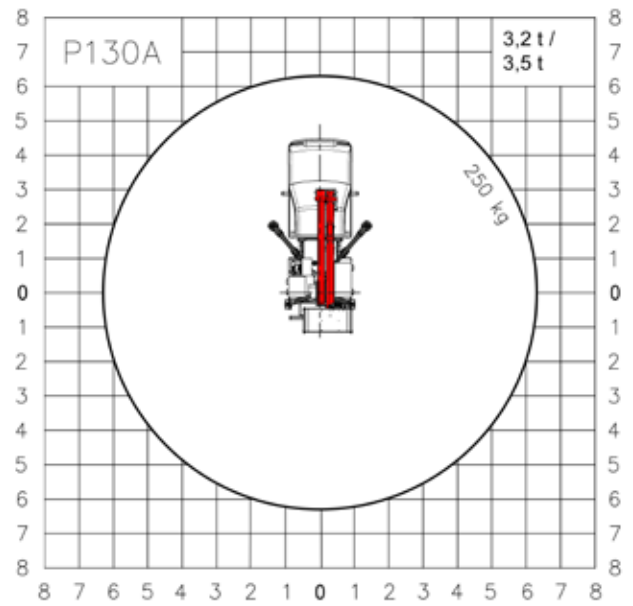
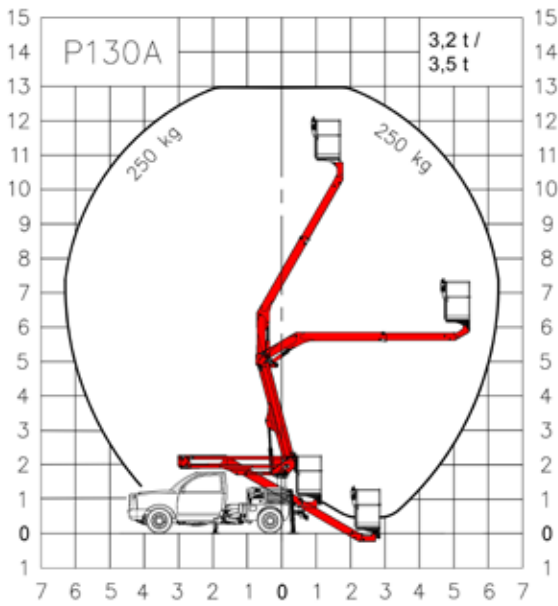
- Ford Ranger Cab XL 2.0 TDCi, 3,2 t
- Ford Ranger Cab XL 2.0 TDCi, 3,5 t



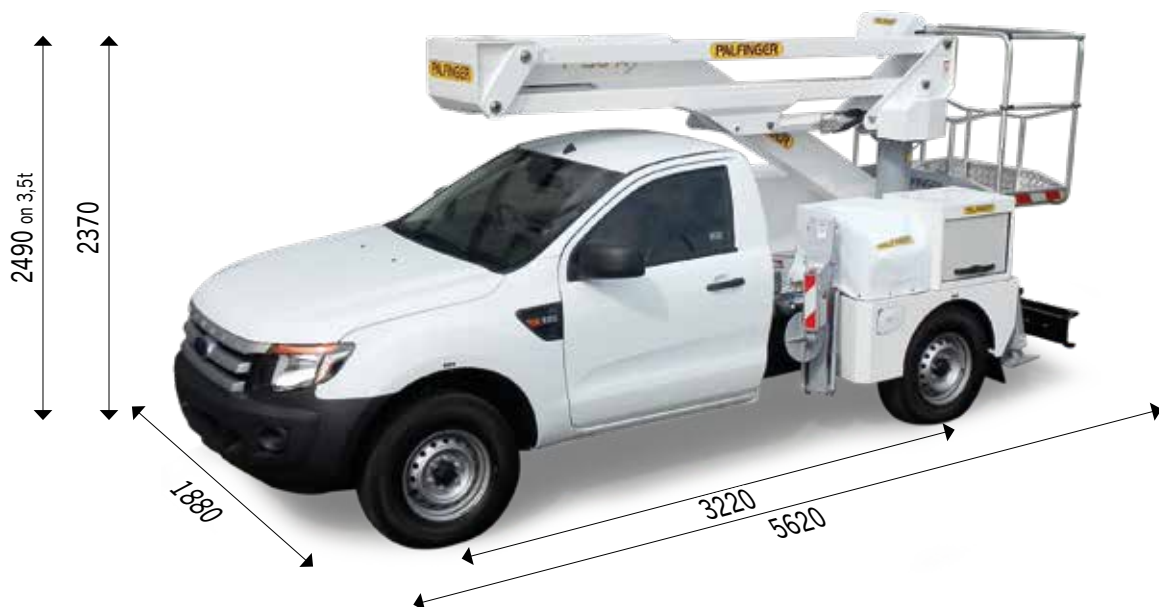
TECHNICAL DATA

	Max. working height	13 m		Turret rotation	360°
	Max. working height from platforms deck	11 m		Basket dimensions	m 1,4 x 0,7 x 1,1 h
	Smax. Working outreach	6,3 m		Max. load allowed per basket	250 kg - 230 kg VTR
	Outriggers width	2,7 m		Gross vehicle weight	3,2 t / 3,5 t
	Operating angle of main arm	-30°/+60°			

WORK AREA



DIMENSION



CONTACT DETAILS**PALFINGER PLATFORMS ITALY SRL**

Via Enrico De Nicola, 31
41122 Modena (MO) - Italy
TEL: +39 059 252426
EMAIL: info@palfingerplatformsitaly.it

KP-P130AM3+EN

The illustrations in the brochure may show units equipped with optional accessories and not always the standard version. National legislation must be complied with during construction/assembly. The dimensions stated are not binding. The company cannot be held responsible for any changes in technical information, inaccuracies, or translation errors.