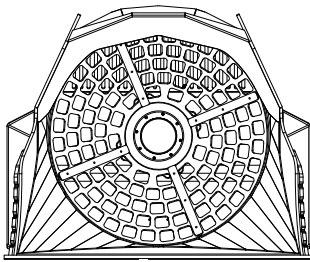
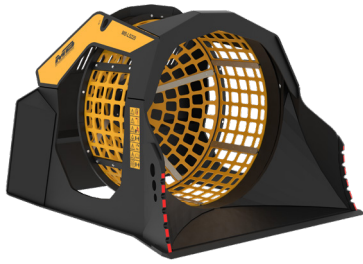
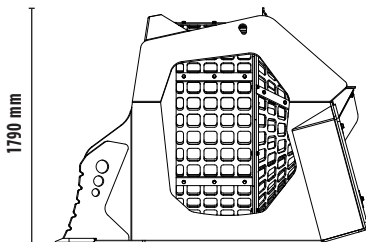


## SCREENING BUCKET

# MB-LS220 S2



2180 mm



1790 mm

2355 mm



## SPECIFICATIONS



Recommended loader*	ton	15 - 25
Weight	ton	2,80
Load capacity	m <sup>3</sup>	2,40
Pressure	bar	200 - 250
Back pressure	bar	< 20
Oil flow rate**	l/min	120 - 140
Basket diameter	mm	1600
Basket depth	mm	1225

\* Please verify machine's Rated Operating Capacity.

\*\* The minimum hydraulic flow rate value must be alongside the required operating pressure.

## ACCESSORIES

Hour meter

24 month warranty

## APPLICATION AREAS



ROAD WORKS



QUARRIES



MINES



TUNNELS



ENCLOSED SPACES



RECYCLING AGGREGATES



MAINTAINING LANDSCAPE  
AND AGRICULTURAL AREAS