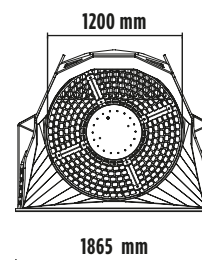
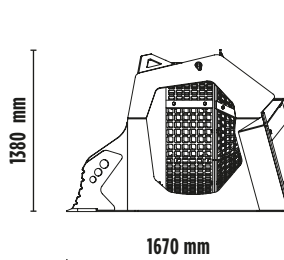
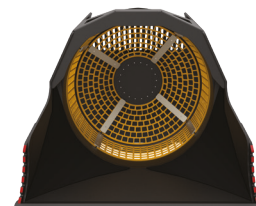
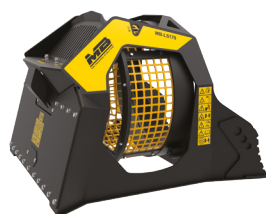
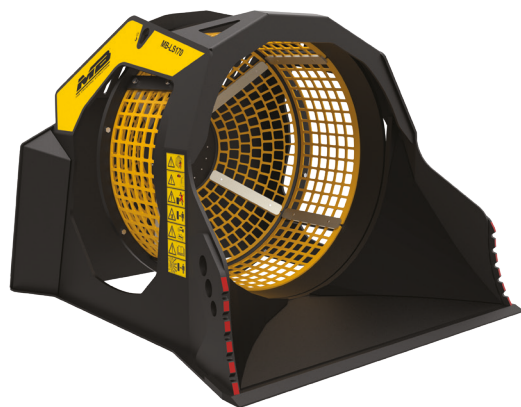


MB-LS170 S2



ACCESSORIES

- HOUR METER
- 24 MONTH WARRANTY

SPECIFICATIONS

RECOMMEND BACKHOE LOADER	≥ 8 ≤ 15 ton
RECOMMEND LOADER*	≥ 8 ≤ 15 ton

*Please verify machine's Rated Operating Capacity.

WEIGHT	1,45 ton
--------	----------

LOAD CAPACITY	1,10 m ³
---------------	---------------------

PRESSURE	> 160 bar
----------	-----------

BACK PRESSURE	< 40 bar
---------------	----------

OIL FLOW RATE*	80 l/min..
----------------	------------

*The hydraulic flow and pressure values must meet the required parameters.

BASKET DIAMETER	1200 mm
-----------------	---------

BASKET DEPTH	900 mm
--------------	--------

AREAS OF APPLICATION



RECYCLING
AGGREGATES



URBAN
CONSTRUCTION
SITES



ROAD WORKS



MAINTAINING
LANDSCAPE AND
AGRICULTURAL
AREAS



QUARRIES



MINES



TUNNELS



ENCLOSED
SPACES

The data provided above is not binding, as the manufacturer reserves the right to make improvements to its products at any time and without notice.

Rev. 2023/01



MBCRUSHER.COM