

PARTS LIST

VMX35ER

MULTIPLE USE CUTTER/CRUSHER



SUPPLY PERIOD OF SPARE PARTS

Thank you for purchasing a Furukawa Rock Drill product.

Please note that the supply of spare parts will be assured for 10 years after the termination of production. Although the supply of spare parts is terminated in principle at the maturity of the subject supply period, we may be able to supply them upon request even after the expiration of the supply period on condition that the delivery date and price are subject to negotiation.

Even if it is within the supply period, however, the delivery date, price, etc. may be subject to negotiation when it is difficult to keep stocks should the purchased parts, such as electronic parts, etc., be not available because the manufacturer does not produce them anymore.

If you have any questions about any particular model subject to the warranty as stated above and the time limit of spare parts supply, please contact your nearest FRD Europe B.V. distributor.

USING THE PARTS LIST

1. This parts list describes the components of a multiple use cutter/crusher.
2. When ordering a part, refer to the illustrations and lists in this parts list and then inform the FRD Europe B.V. distributor in your area of the following items.
 - (1) Model name
 - (2) Serial No.
 - (3) Part No.
 - (4) Part name
 - (5) Quantity
3. Use "Genuine Furukawa Rock Drill Parts" when replacing all parts.
4. The illustrations in this parts list show the positions and shapes of the parts so that a user can order a part without any problem.

Do not repair a cutter/crusher by using this parts list.
5. The parts in this list are subject to change for improvement without notice on the part of the manufacturer.

How to use the parts list

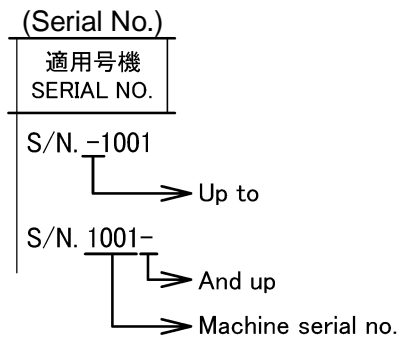
(1) Illustration

- ① Group Name.....It is the same as the Group Name on the CONTENTS.
- ② Fig. No.....It shows the illustration number and corresponds to Fig. No. of the parts breakdown.
- ③ Item.....It corresponds to Item on the parts breakdown.
- ④ Group Name.....It shows the group name in which the parts breakdown is covered on a separate page in this parts list.
- ⑤ PageThe left side of “–” (hyphen) shows consecutive numbers in each unit. The right side shows consecutive numbers of drawings/lists in each unit.

(2) Parts Breakdown

- ① Item.....It is shown by two figures and corresponds to the Item in the illustration. Item nos. are not always in sequence.
When a part has been changed in design and then the part number or quantity has been changed, a sub-number is added to Item in order to show the order of change.
- ② Part No.(a) Part number is shown.
(b) Indication of a no-service part
With parts which cannot be serviced as a single part, only the illustrations and part names are given and the mark ** is shown in the part number column. These parts are serviced as an assembly, a kit or a set.
- ③ Part NameIt shows the description of a part. When the following marks are put before the part name.
No mark Represents a single part or an assembly component.
* Represents a part or an assembled part of the assembly component. It is listed out after the assembly name.
**..... Represents a part of the assembled part of the assembly component.
- ④ Q' tyAs a rule, this column indicates the quantity of a part required for one crusher. In case of a part of an assembly component, however, it indicates the quantity of the part required for one assembly component. In this column, the following mark is also used besides the Arabic numerals to indicate the quantity of parts.
()Parenthesis This part is not included in an assembly.***Option etc.
AR As required.

⑤ Serial No.....Serial No. in which this part is used is as shown in the following example:



⑥ RemarksThe marks and part numbers in the Remarks column are described below.

A..... Replaceable common part and following part no.

B..... Represents that this part is not supplied as a single part; however, it is supplied as a set.

C Represents that this part is not supplied as a single part.

When an assembly including this part is supplied, the parts after this mark are supplied. When no parts are given after this mark, the components of this part are supplied.

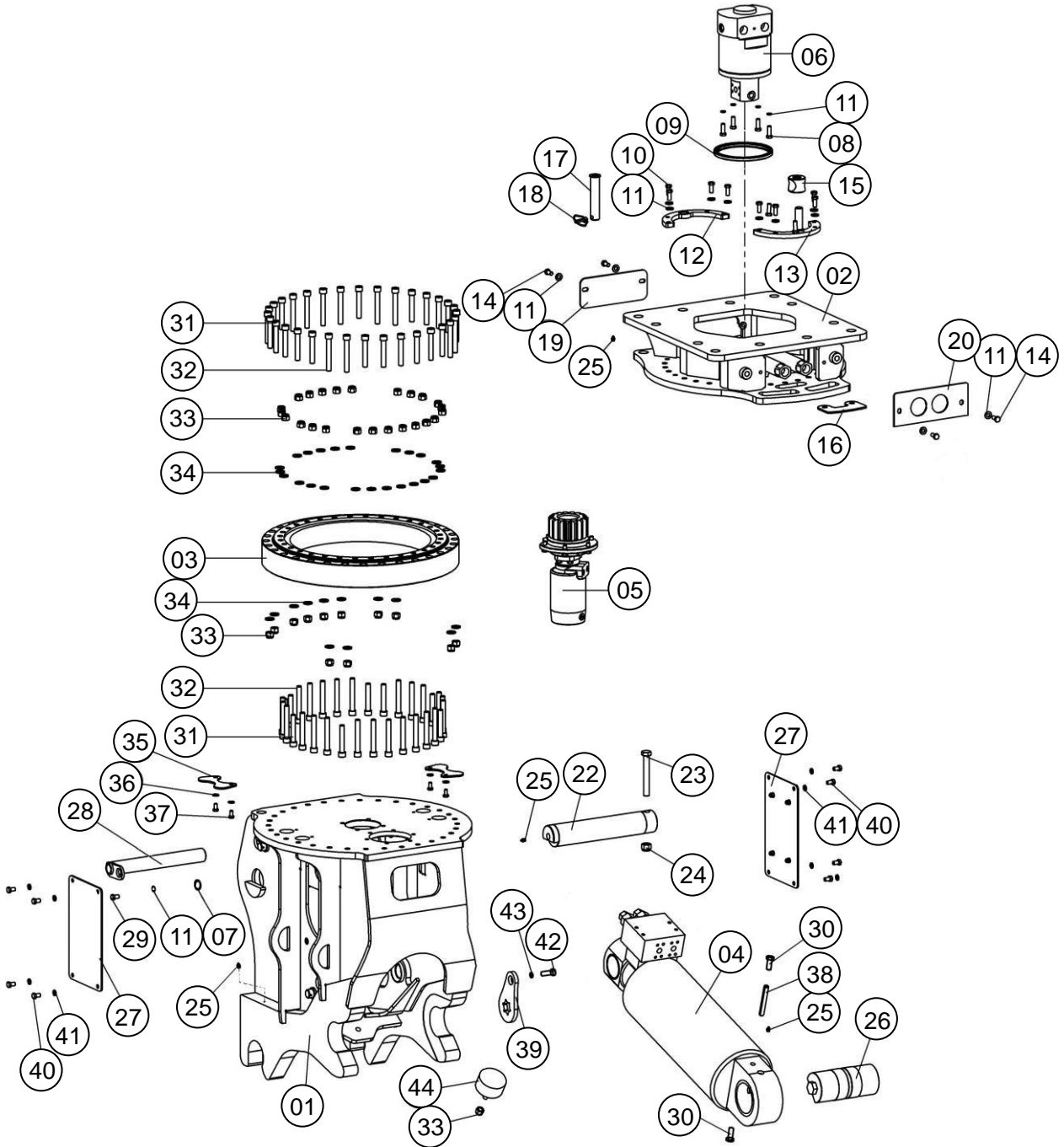
D This part is no longer manufactured due to an incorrect part number or a change and supplying this part is discontinued. When a substitute can be supplied, the part after this mark is supplied.

⑦ PageThe left side of “—” (hyphen) shows consecutive numbers in each unit. The right side shows consecutive numbers of drawings/lists in each unit.

CONTENTS

GROUP NAME	PAGE
CRUSHER FRAME ASSEMBLY	01-01
HYDRAULIC CYLINDER	02-01
ROTATION MOTOR ASSEMBLY	03-01
HYDRAULIC SYSTEM	04-01
PRIMARY (P) JAW ASSEMBLY	05-01
PULVERIZER (S) JAW ASSEMBLY	06-01
COMBI CUTTER/CRUSHER (M) JAW ASSEMBLY	07-01
STEEL CUTTER (C) JAW ASSEMBLY	08-01
SPECIAL CRUSHER (SW) JAW ASSEMBLY	09-01

CRUSHER FRAME ASSEMBLY



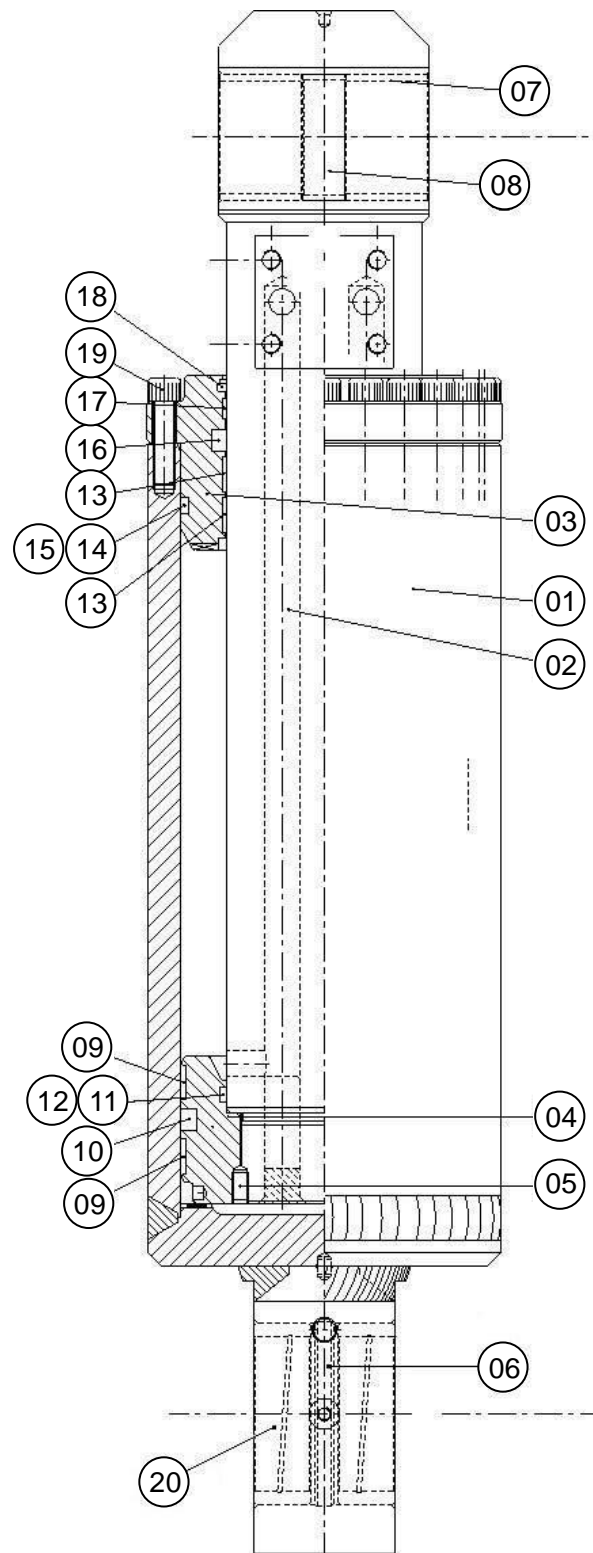
CRUSHER FRAME ASSEMBLY

ITEM	PART NO.	PART NAME	Q'TY	REMARKS
01	VMX35ER-02001	FRAME ASSEMBLY	1	
02	VMX35ER-02218	FLAT TOP BRACKET	1	
03	VM32ER-93003	SWIVEL BEARING	1	
04	VMX35ER-91001	HYDRAULIC CYLINDER	1	SEE PAGE 02-01
05	**	ROTATION MOTOR ASSEMBLY	1	SEE PAGE 03-01
06	VM19ER-94001	HYDRAULIC SWIVEL JOINT ASSEMBLY	1	
07	VMX25ER-02501	FLAT WASHER	1	M12
08	101032-12040	HEXAGON BOLT	4	M12 X 40 10.9
09	VM19ER-02508	SEAL	1	
10	101032-12035	HEXAGON BOLT	8	M12 X 35 10.9
11	NORDLOCK 12	DISC WASHER	18	M12
12	VM19ER-02510	SEMI CIRCULAR LOCKING RING	1	
13	VM19ER-02509	SEMI CIRCULAR LOCKING RING	1	
14	101022-12025	HEXAGON BOLT	4	M12 X 25 8.8
15	VM19ER-02511	ANTI ROTATION BLOCK	1	
16	VM32ER-02507	COVER PLATE	1	
17	VR26ER2-02505	SAFETY PIN	1	
18	VR26ER2-02506	COTTER PIN	1	
19	VM32ER-02505	COVER	1	
20	VM32ER-02518	DUST COVER	1	
22	VMX35ER-02501	CYLINDER ROD PIN	1	
23	RC22ER-02517	HEXAGON BOLT	1	
24	VR26ER2-02511	SELF LOCKING NUT	1	
25	VS30E-02508	GREASE NIPPLE	5	
26	VMX35ER-02502	CYLINDER PIN	1	
27	VMX30ER-02503	COVER	2	
28	VMX35ER-02503	SAFETY PIN	1	
29	101022-12020	HEXAGON BOLT	9	M12 X 20 8.8
30	101032-20055	HEXAGON BOLT	2	M20 X 55 10.9
31	102032-16100	HEXAGON SOCKET BOLT	18	
32	102032-16120	HEXAGON SOCKET BOLT	54	
33	VS30E-02506	SELF LOCKING NUT	55	
34	HB1R-81104E	DISC WASHER	54	M16
35	VM32ER-02506	COVER	2	
36	101022-10020	HEXAGON BOLT	4	M10 X 20 8.8
37	VR26ER2-08506	DISC WASHER	4	M10
38	VMX30ER-02505	SPRING PIN	1	

CRUSHER FRAME ASSEMBLY

ITEM	PART NO.	PART NAME	Q'TY	REMARKS
39	VMX35ER-02504	WRENCH	1	
40	VM19ER-08508	DISC WASHER	9	M12
41	VMX30ER-02507	DISC WASHER	2	M20
42	VMX30ER-02508	HEXAGON BOLT	1	M24
43	VX100ER-02509	DISC WASHER	1	M24
44	VMX25ER-02509	BUFFER	1	
**	VM19ER-94011	HYDRAULIC SWIVEL JOINT SEAL KIT	**	

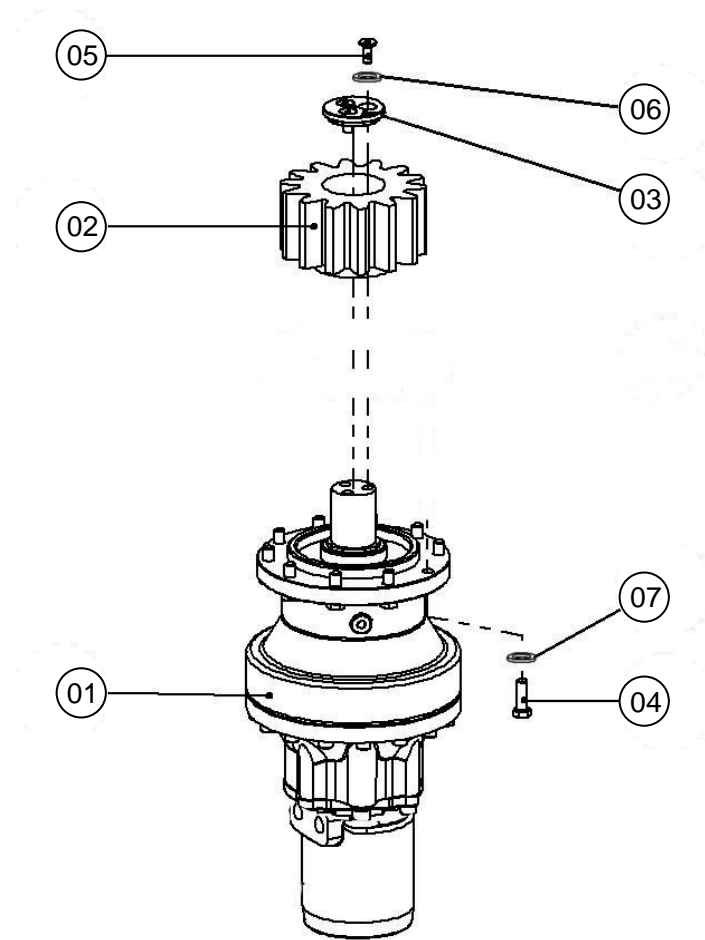
HYDRAULIC CYLINDER



HYDRAULIC CYLINDER

ITEM	PART NO.	PART NAME	Q'TY	REMARKS
	VMX35ER-91001	HYDRAULIC CYLINDER ASSEMBLY	1	(ITEMS 1 - 20)
01	VMX35ER-01501	* CYLINDER TUBE	1	
02	VMX35ER-01502	* PISTON ROD	1	
03	VMX35ER-01503	* PISTON HEAD	1	
04	VMX35ER-01504	* PISTON	1	
05	VMX35ER-01505	* SET SCREW	2	
06	VMX35ER-01506	* SPACER	1	
07	VMX35ER-01507	* BUSHING	2	
08	VMX35ER-01508	* SPACER	1	
09	VMX35ER-01509	* PISTON GUIDE RING	2	
10	VMX35ER-01510	* PISTON SEAL	1	
11	VMX35ER-01511	* PISTON SEAL	1	
12	VMX35ER-01512	* PISTON SEAL	1	
13	VMX35ER-01513	* ROD GUIDE RING	2	
14	VMX35ER-01514	* SEAL	1	
15	VMX35ER-01515	* SEAL	1	
16	VMX35ER-01516	* ROD SEAL	1	
17	VMX35ER-01517	* GUIDE RING	1	
18	VMX35ER-01518	* SCRAPER RING	1	
19	VMX35ER-01519	* HEXAGON SOCKET BOLT	28	
20	VMX35ER-01520	* BUSHING	2	
**	VMX35ER-91011	CYLINDER SEAL KIT	1	(ITEMS 9 - 18)

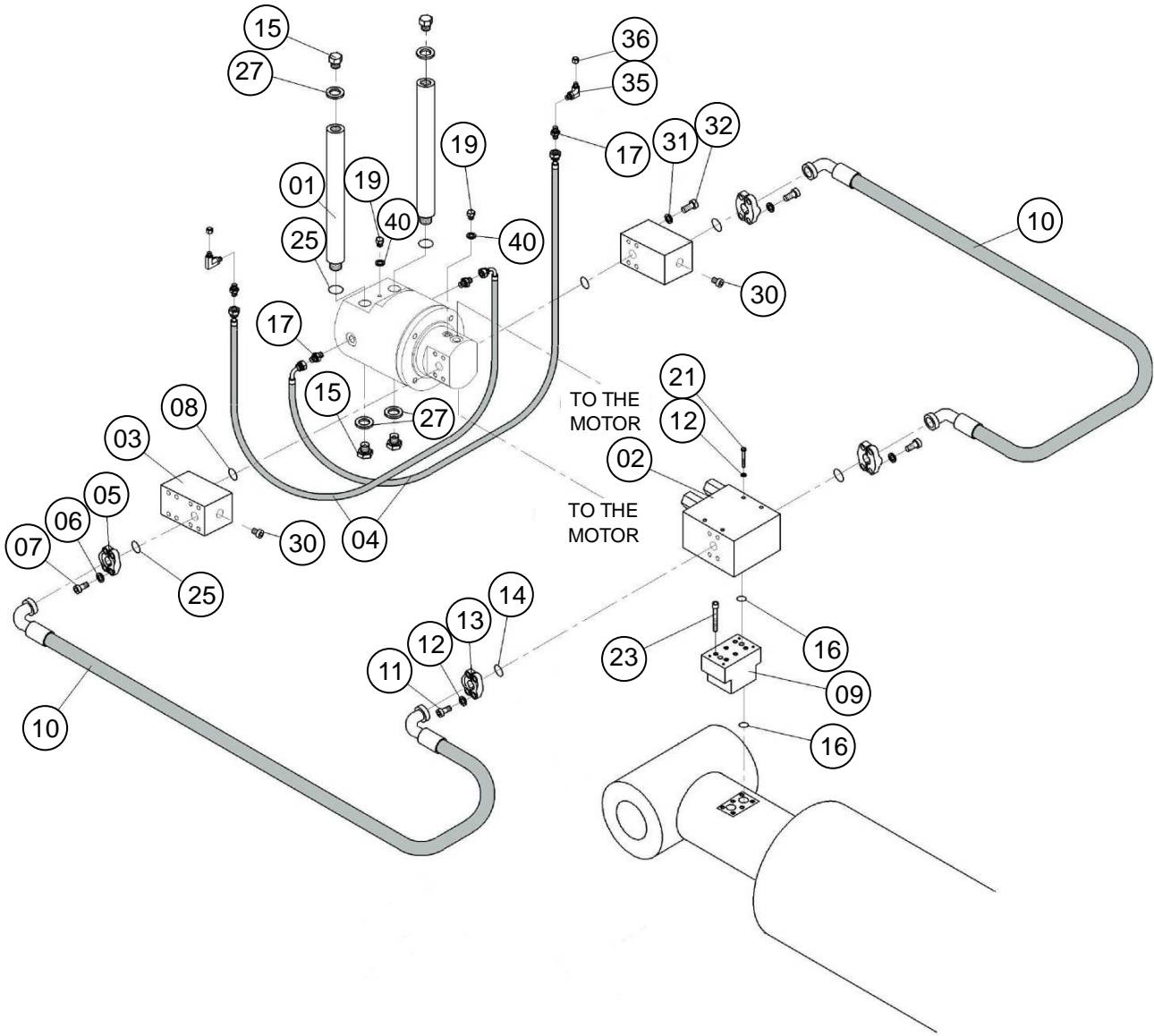
ROTATION MOTOR ASSEMBLY



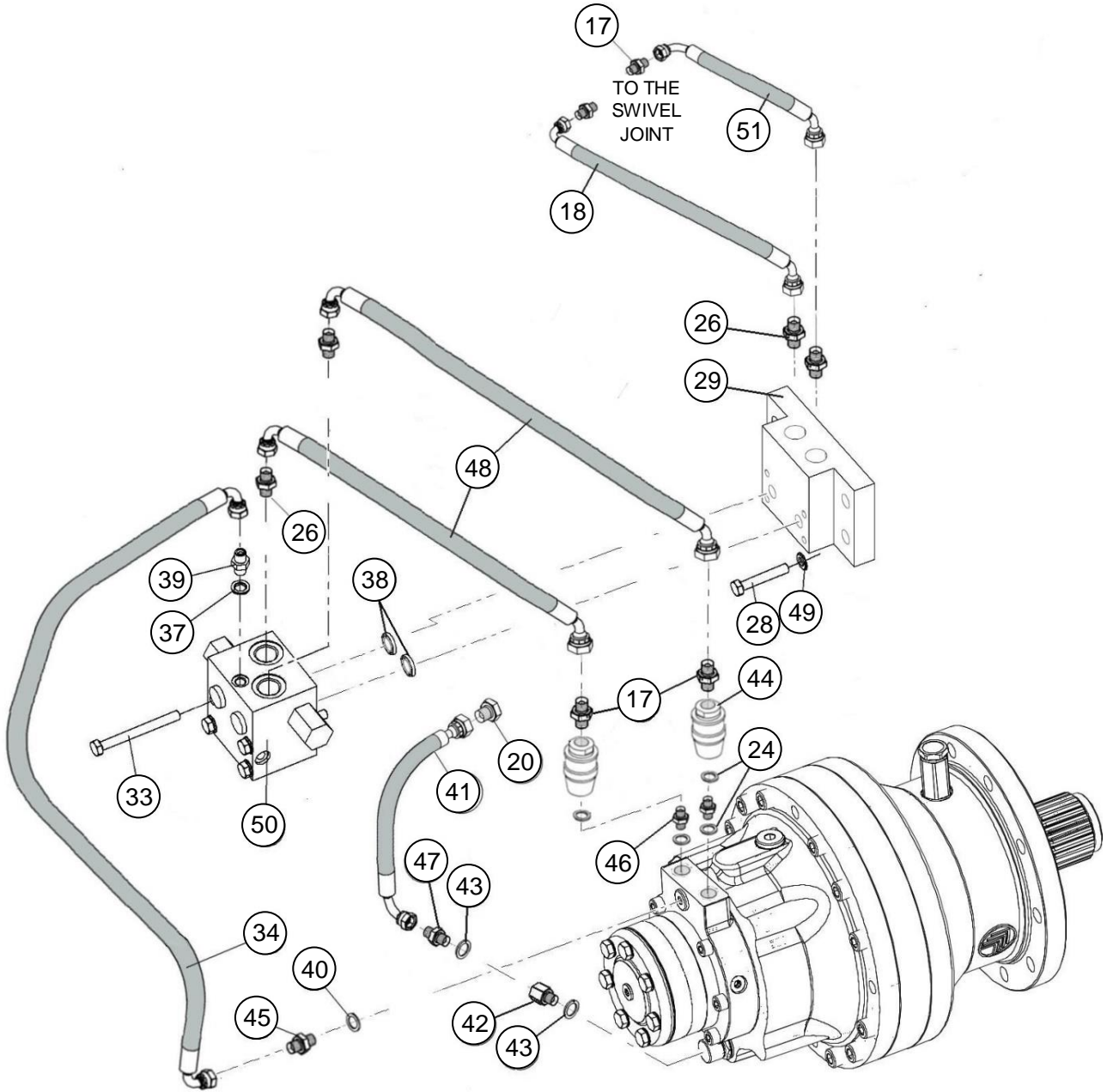
ROTATION MOTOR ASSEMBLY

ITEM	PART NO.	PART NAME	Q'TY	REMARKS
**	**	ROTATION ASSEMBLY	1	(ITEMS 1 - 7)
01	VMX30ER-98501	* ROTATION KIT	1	
02	VM32ER-08503	* GEAR	1	
03	VM32ER-08505	* FLANGE	1	
04	101032-12035	* HEXAGON BOLT	10	M12 X 35 10.9
05	101032-10025	* HEXAGON BOLT	3	M10 X 25 10.9
06	VMX25ER-03502	* DISC WASHER	3	
07	VM19ER-08508	* DISC WASHER	10	
**	VR26ER2-98011	ROTATION MOTOR SEAL KIT	1	
**	VMX30ER-98021	BRAKE SEAL KIT	1	
**	VMX30ER-98031	REDUCTION GEAR SEAL KIT	1	

HYDRAULIC SYSTEM



HYDRAULIC SYSTEM



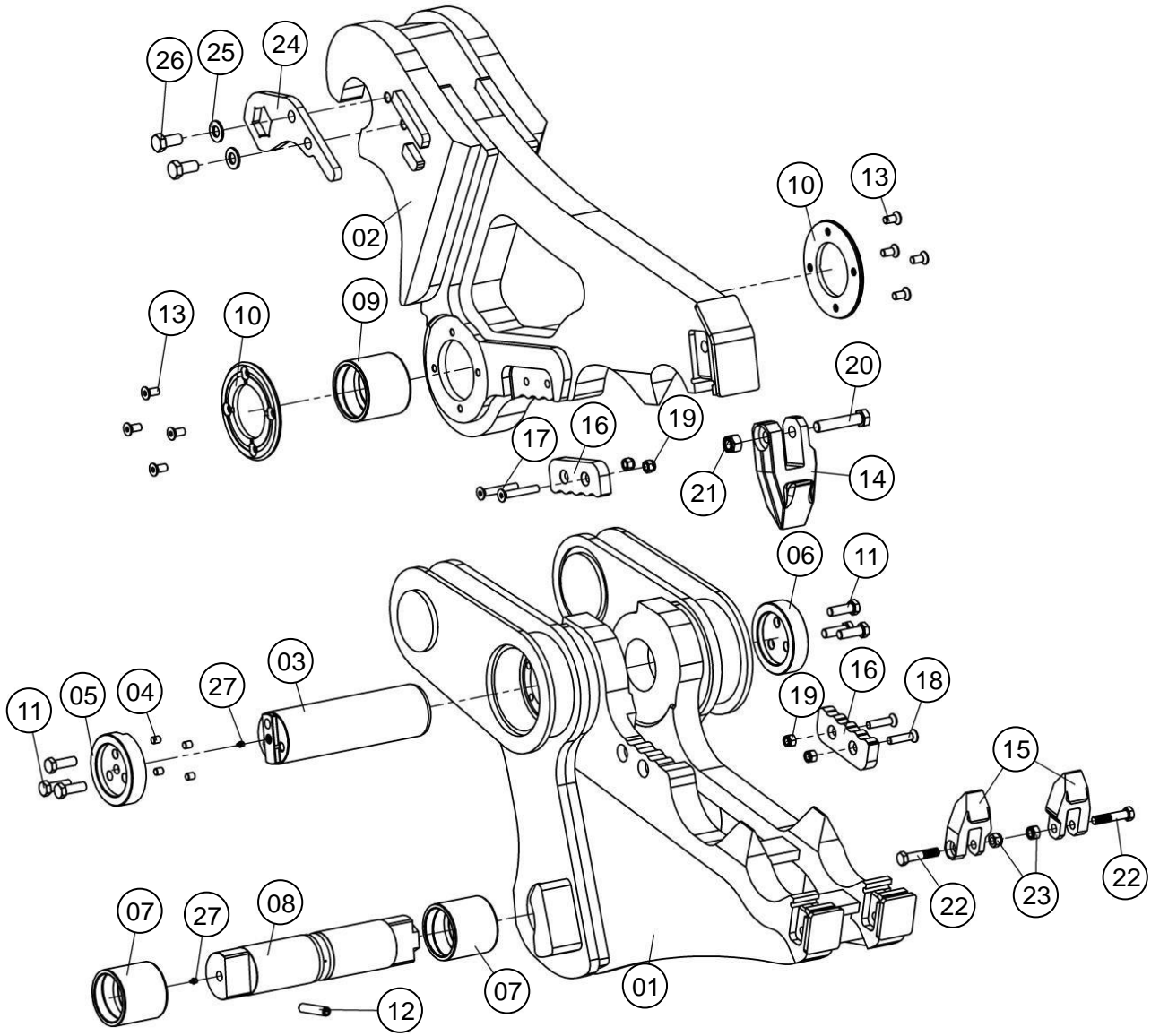
HYDRAULIC SYSTEM

ITEM	PART NO.	PART NAME	Q'TY	REMARKS
01	VM32ER-03501	EXTENSION TUBE	2	
02	VS22-94016	ACCELERATION VALVE ASSEMBLY	1	
03	VM32ER-03511	DISTRIBUTION BLOCK	2	
04	VM32ER-03504	HOSE ASSEMBLY	2	
05	VS30E-03504	SPLIT FLANGE	2	
06	VM19ER-08508	DISC WASHER	8	
07	102032-12040	HEXAGON SOCKET BOLT	8	M12 X 40 10.9
08	VM32ER-03508	O-RING	2	
09	VS30E-03501	DISTRIBUTION BLOCK	1	
10	VM32ER-03502	HOSE ASSEMBLY	2	
11	102032-14045	HEXAGON SOCKET BOLT	8	M14 X 45 10.9
12	VX100ER-03509	DISC WASHER	8	M14
13	VS30E-03509	SPLIT FLANGE	2	
14	161021-00038	O-RING	2	
15	VM19ER-03513	PLUG	4	
16	161021-00035	O-RING	4	
17	VM32ER-03510	CONNECTOR	8	
18	VMX35ER-03501	HOSE ASSEMBLY	1	
19	VM19ER-03515	PLUG	3	
20	VM19ER-03512	PLUG	1	
21	102032-14130	HEXAGON SOCKET BOLT	4	M14 X 130 10.9
23	102032-14070	HEXAGON SOCKET BOLT	6	M14 X 70 10.9
24	VM19ER-03520	SEAL	4	
25	VS30E-03503	O-RING	4	
26	VM32ER-03524	CONNECTOR	4	
27	VM19ER-03521	SEAL	4	
28	VR15ER-02622	HEXAGON BOLT	4	
29	VR26ER2-03510	VALVE MOUNTING BLOCK	1	
30	V22-03502	PLUG	2	
31	VMX25ER-03502	DISC WASHER	8	
32	101032-10080	HEXAGON BOLT	8	M10 X 80 10.9
33	VMX35ER-03502	HEXAGON BOLT	4	
34	VMX35ER-03503	HOSE ASSEMBLY	1	
35	VM32ER-03530	45° ELBOW FITTING	2	
36	VM32ER-03531	CAP	2	
37	VM32ER-03515	SEAL	1	
38	VMX35ER-03504	SEAL	2	

HYDRAULIC SYSTEM

ITEM	PART NO.	PART NAME	Q'TY	REMARKS
39	VM32ER-03514	CONNECTOR	1	
40	VM19ER-03516	SEAL	4	
41	VMX30ER-03506	HOSE ASSEMBLY	1	
42	VX100ER-03512	CONNECTOR	1	
43	VX100ER-03511	SEAL	2	
44	VM19ER-03503	VALVE ASSEMBLY	2	
45	VM32ER-03535	CONNECTOR	1	
46	VM32ER-03532	CONNECTOR	2	
47	VX100ER-03513	CONNECTOR	1	
48	VMX35ER-03505	HOSE ASSEMBLY	2	
49	NORDLOCK 12	DISC WASHER	4	M12
50	VR26ER2-03514	VALVE BLOCK	1	
51	VMX30ER-03503	HOSE ASSEMBLY	1	

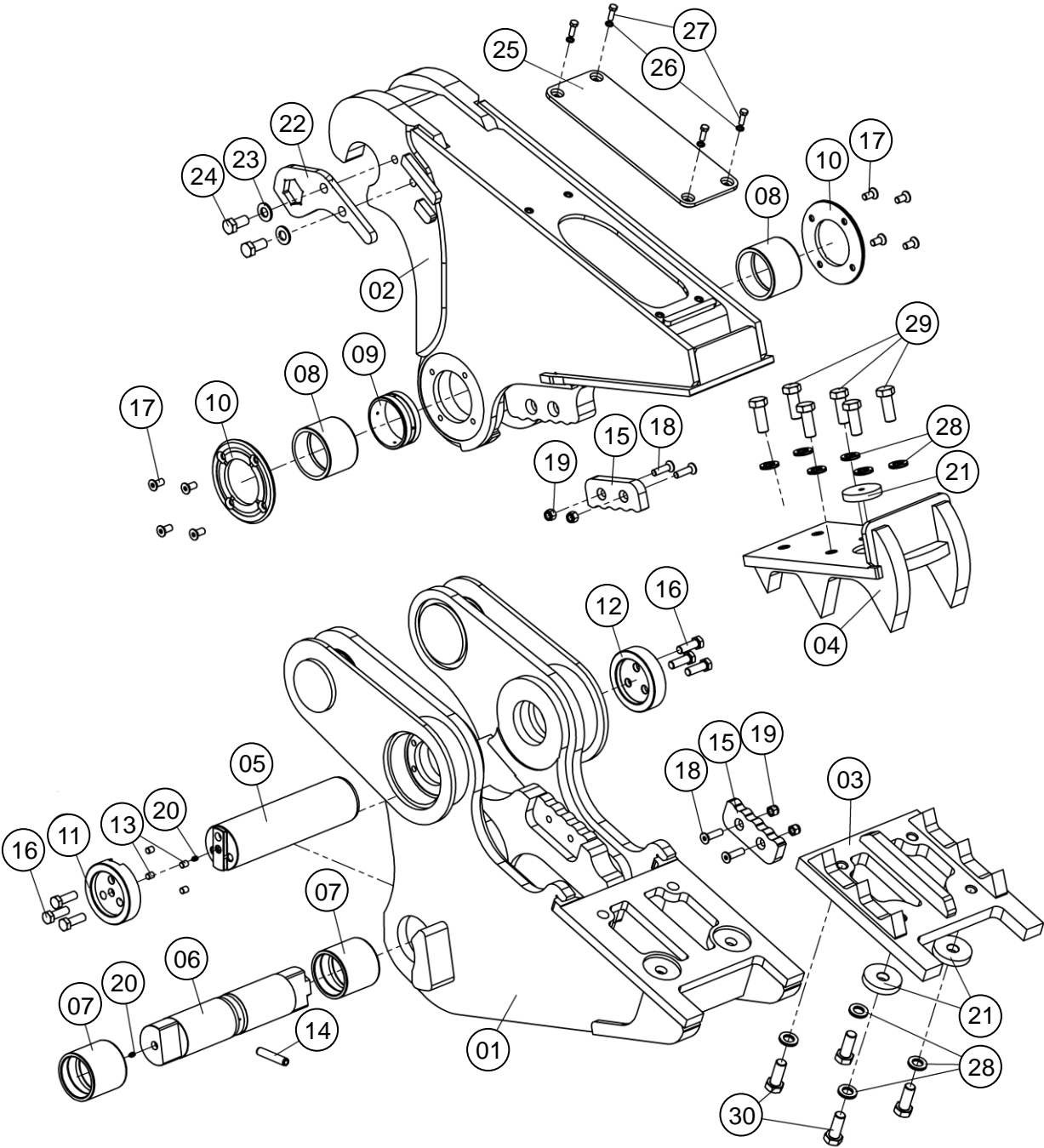
PRIMARY (P) JAW ASSEMBLY



PRIMARY (P) JAW ASSEMBLY

ITEM	PART NO.	PART NAME	Q'TY	REMARKS
01	VMX35ER-02701	JAW	1	
02	VMX35ER-02702	JAW	1	
03	VMX35ER-02703	PIN	1	
04	VMX35ER-02704	DOWEL PIN	6	
05	VMX35ER-02705	PIN COVER	1	
06	VMX35ER-02706	PIN COVER	1	
07	VS30E-02032	BUSHING	2	
08	VMX35ER-02707	CYLINDER PIN	1	
09	VR26ER-02601	BUSHING	1	
10	VMX35ER-02708	FLANGE	2	
11	101032-20065	HEXAGON BOLT	8	M20 X 65 10.9
12	VMX35ER-02709	SPRING PIN	1	
13	V22P-02806	COUNTERSUNK SCREW	8	
14	VMX25ER-02710	TOOTH	1	
15	VMX22ER-02856	TOOTH	2	
16	VM32ER-02024	CUTTER BLADE	2	
17	VMX35ER-02710	COUNTERSUNK SCREW	2	
18	V34P-02808	COUNTERSUNK SCREW	2	
19	VS30E-02506	SELF-LOCKING NUT	4	M16
20	VMX25ER-02711	HEXAGON BOLT	1	
21	VMX25ER-02709	SELF-LOCKING NUT	1	
22	VMX22ER-02857	HEXAGON BOLT	2	
23	VMX22ER-02855	SELF-LOCKING NUT	2	
24	VMX35ER-02711	WRENCH	1	
25	VX100ER-02509	DISC WASHER	2	M24
26	101032-24055	HEXAGON BOLT	2	M24 X 55 10.9
27	VS30E-02508	GREASE NIPPLE	2	

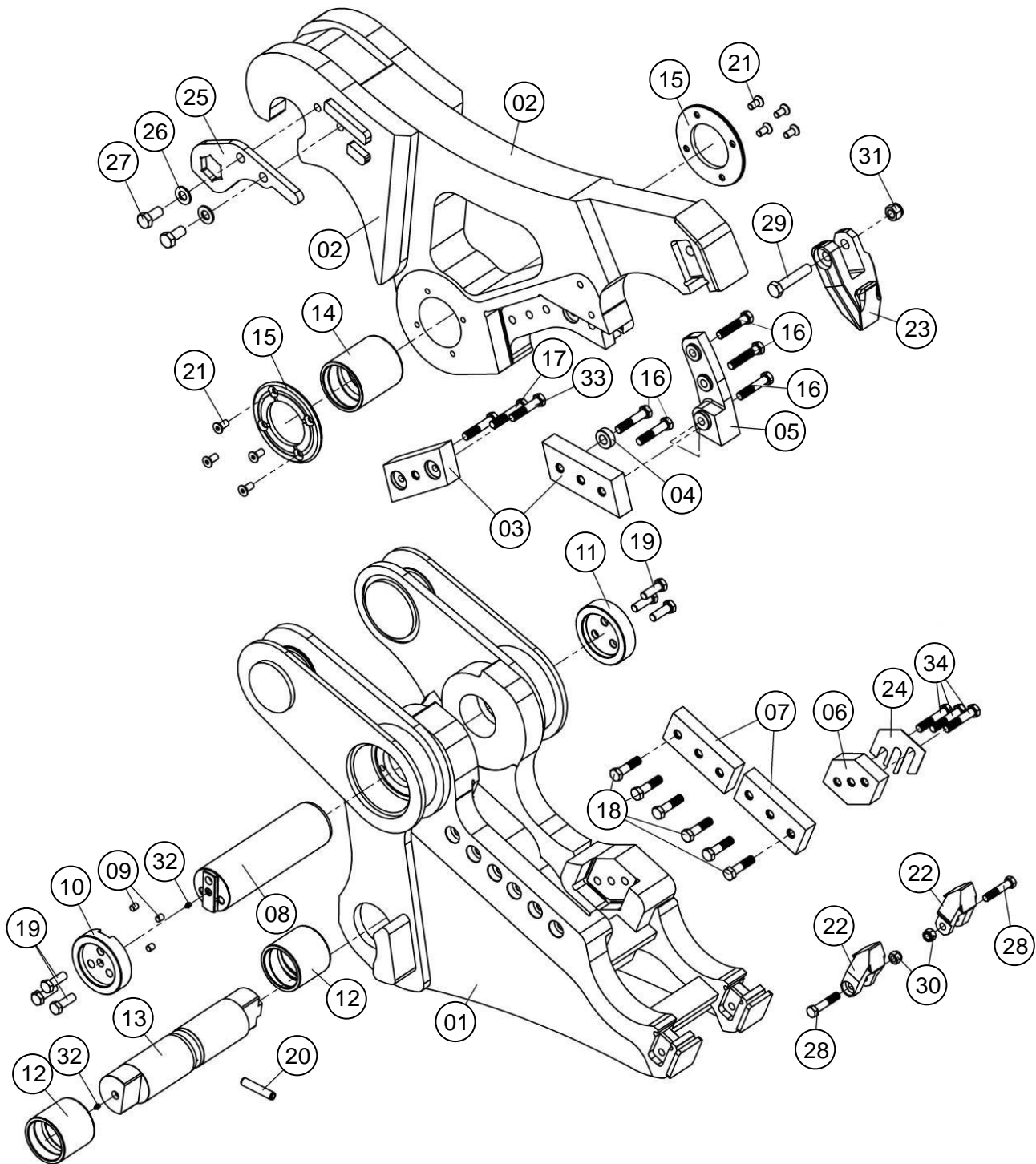
PULVERIZER (S) JAW ASSEMBLY



PULVERIZER (S) JAW ASSEMBLY

ITEM	PART NO.	PART NAME	Q'TY	REMARKS
01	VMX35ER-02801	JAW	1	
02	VMX35ER-02802	JAW	1	
03	VMX35ER-02803	REPLACEABLE TOOTH ASSEMBLY	1	
04	VMX35ER-02804	REPLACEABLE TOOTH ASSEMBLY	1	
05	VMX35ER-02703	PIN	1	
06	VMX35ER-02707	PIN	1	
07	VS30E-02032	BUSHING	2	
08	VX100ER-02504	BUSHING	2	
09	VMX35ER-02805	BUSHING	1	
10	VMX35ER-02708	FLANGE	2	
11	VMX35ER-02705	PIN COVER	1	
12	VMX35ER-02706	PIN COVER	1	
13	VMX35ER-02704	DOWEL PIN	6	
14	VMX35ER-02709	SPRING PIN	1	
15	VM32ER-02024	CUTTER BLADE	2	
16	101032-20065	HEXAGON BOLT	8	M20 X 65 10.9
17	V22P-02806	COUNTERSUNK SCREW	8	
18	VS30E-02507	COUNTERSUNK SCREW	4	M16 X 60 10.9
19	VS30E-02506	SELF-LOCKING NUT	4	M16
20	VS30E-02508	GREASE NIPPLE	2	
21	VMX30ER-02807	SPACER	4	
22	VMX35ER-02711	WRENCH	1	
23	VX100ER-02509	DISC WASHER	2	M24
24	101032-24055	HEXAGON BOLT	2	M24 X 55 10.9
25	VMX35ER-02806	COVER PLATE	1	
26	NORDLOCK 12	DISC WASHER	4	M12
27	101032-12020	HEXAGON BOLT	4	M12 X 20 10.9
28	HB5G-81114E	DISC WASHER	10	M27
29	VMX35ER-02807	HEXAGON BOLT	6	M27
30	101032-27080	HEXAGON BOLT	4	M27 X 80 10.9

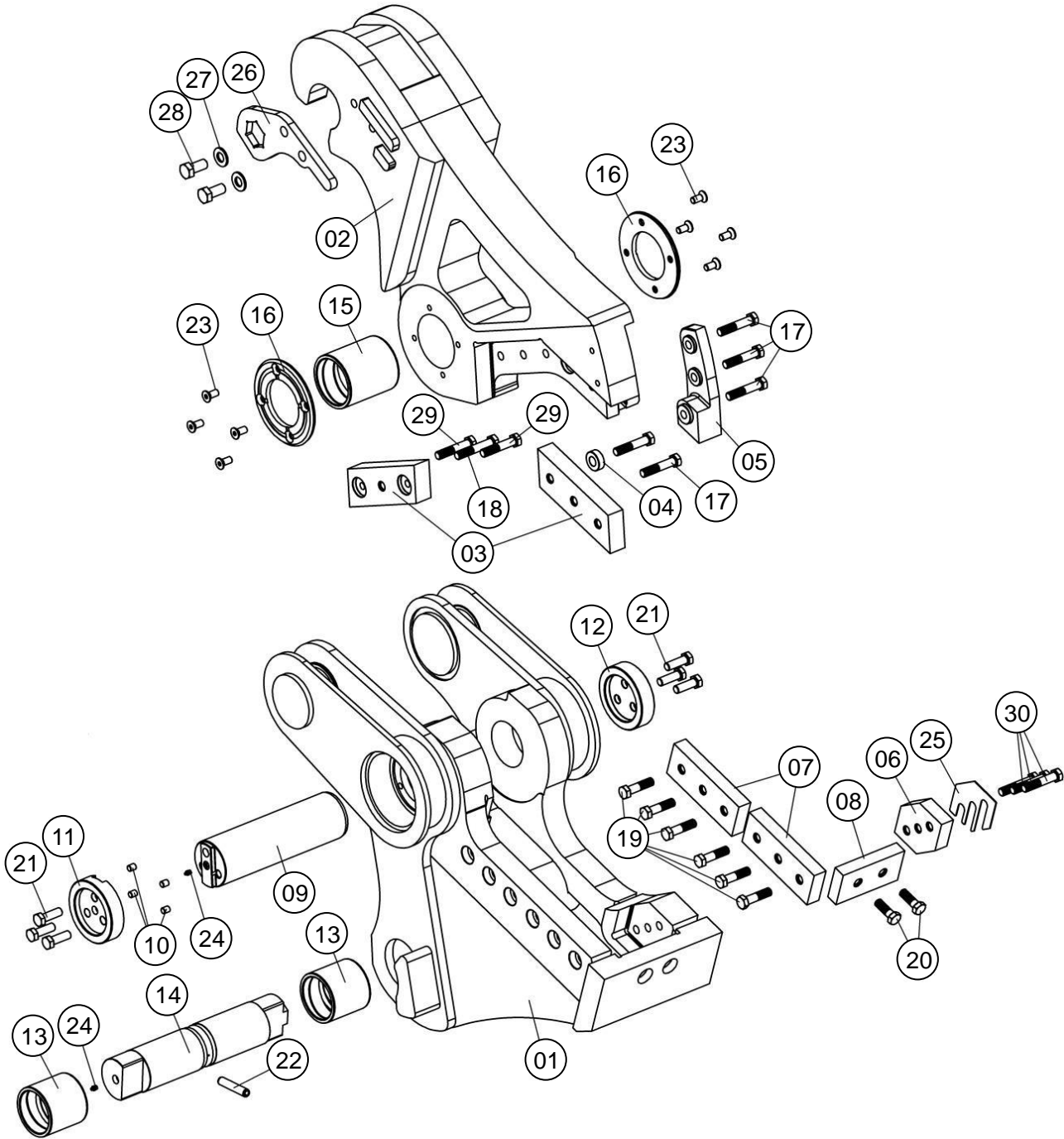
COMBI CUTTER/CRUSHER (M) JAW ASSEMBLY



COMBI CUTTER/CRUSHER (M) JAW ASSEMBLY

ITEM	PART NO.	PART NAME	Q'TY	REMARKS
01	VMX35ER-02851	JAW	1	
02	VMX35ER-02852	JAW	1	
03	VMX30ER-02853	CUTTER BLADE	2	
04	VR26ER-02634	SPACER	1	
05	VMX30ER-02854	CUTTER BLADE	1	
06	V34M-02807	CUTTER BLADE	1	
07	V34M-02808	CUTTER BLADE	2	
08	VMX35ER-02703	PIN	1	
09	VMX35ER-02704	DOWEL PIN	4	
10	VMX35ER-02705	PIN COVER	1	
11	VMX35ER-02706	PIN COVER	1	
12	VS30E-02032	BUSHING	2	
13	VMX35ER-02707	PIN	1	
14	VMX35ER-02853	BUSHING	1	
15	VMX35ER-02708	FLANGE	2	
16	VR26ER-02638	HEXAGON BOLT	5	
17	VMX35ER-02854	HEXAGON BOLT	1	
18	VR26ER-02631	HEXAGON BOLT	6	
19	101032-20065	HEXAGON BOLT	8	M20 X 65 10.9
20	VMX35ER-02709	SPRING PIN	1	
21	V22P-02806	COUNTERSUNK SCREW	8	
22	VMX22ER-02856	TOOTH	2	
23	VMX25ER-02710	TOOTH	1	
24	VMX30ER-02856	SHIM	1	
25	VMX35ER-02711	WRENCH	1	
26	VX100ER-02509	DISC WASHER	2	M24
27	101032-24055	HEXAGON BOLT	2	M24 X 55 10.9
28	VMX22ER-02857	HEXAGON BOLT	2	
29	VMX25ER-02711	HEXAGON BOLT	1	
30	VMX22ER-02855	SELF-LOCKING NUT	2	
31	VMX25ER-02709	SELF-LOCKING NUT	1	
32	VS30E-02508	GREASE NIPPLE	2	
33	VMX35ER-02855	HEXAGON BOLT	2	
34	VMX35ER-02856	HEXAGON BOLT	3	

STEEL CUTTER (C) JAW ASSEMBLY



STEEL CUTTER (C) JAW ASSEMBLY

ITEM	PART NO.	PART NAME	Q'TY	REMARKS
01	VMX35ER-02875	JAW	1	
02	VMX35ER-02876	JAW	1	
03	VMX35ER-02877	CUTTER BLADE	2	
04	VR26ER-02634	SPACER	1	
05	VMX30ER-02854	CUTTER BLADE	1	
06	V34M-02807	CUTTER BLADE	1	
07	VMX35ER-02878	CUTTER BLADE	2	
08	VMX30ER-02878	CUTTER BLADE	1	
09	VMX30ER-02703	PIN	1	
10	VMX35ER-02704	DOWEL PIN	6	
11	VMX35ER-02705	PIN COVER	1	
12	VMX35ER-02706	PIN COVER	1	
13	VS30E-02032	BUSHING	2	
14	VMX35ER-02707	PIN	1	
15	VMX35ER-02853	BUSHING	1	
16	VMX35ER-02708	FLANGE	2	
17	VR26ER-02638	HEXAGON BOLT	5	
18	VMX35ER-02854	HEXAGON BOLT	1	
19	VR26ER-02631	HEXAGON BOLT	6	
20	VR26ER-02629	HEXAGON BOLT	2	
21	101032-20065	HEXAGON BOLT	8	M20 X 65 10.9
22	VMX35ER-02709	SPRING PIN	1	
23	V22P-02806	COUNTERSUNK SCREW	8	
24	VS30E-02508	GREASE NIPPLE	2	
25	VMX30ER-02856	SHIM	1	
26	VMX35ER-02711	WRENCH	1	
27	VX100ER-02509	DISC WASHER	2	M24
28	101032-24055	HEXAGON BOLT	2	M24 X 55 10.9
29	VR42ER-02628	HEXAGON BOLT	2	
30	VR26ER-02632	HEXAGON BOLT	3	

SPECIAL CRUSHER (SW) JAW ASSEMBLY

ITEM	PART NO.	PART NAME	Q'TY	REMARKS
01	VMX35ER-02901	JAW	1	
02	VMX35ER-02902	JAW	1	
03	VMX35ER-02903	PIN	1	
04	VMX35ER-02707	PIN	1	
05	VS30E-02032	BUSHING	2	
06	VMX35ER-02709	SPRING PIN	1	
07	VMX35ER-02705	PIN COVER	1	
08	VMX35ER-02704	DOWEL PIN	4	
09	VS30E-02508	GREASE NIPPLE	2	
10	101032-20065	HEXAGON BOLT	8	M20 X 65 10.9
11	V22P-02806	COUNTERSUNK SCREW	8	
12	VMX35ER-02708	FLANGE	2	
13	VMX35ER-02706	PIN COVER	1	
14	VMX35ER-02711	WRENCH	1	
15	101032-24055	HEXAGON BOLT	2	M24 X 55 10.9
16	VX100ER-02504	BUSHING	2	
17	VMX35ER-02904	BUSHING	1	
18	VMX25ER-02709	SELF-LOCKING NUT	1	
19	VMX25ER-02710	TOOTH	1	
20	VMX25ER-02711	HEXAGON BOLT	1	
21	VS30E-02506	SELF-LOCKING NUT	40	M16
22	VMX35ER-02857	HEXAGON BOLT	2	
23	VMX35ER-02855	SELF-LOCKING NUT	2	
24	VMX35ER-02856	TOOTH	2	
25	VX100ER-02509	DISC WASHER	2	M24
26	V34P-02808	COUNTERSUNK SCREW	38	
27	VM19ER-02527	COUNTERSUNK SCREW	2	
28	VMX35ER-02905	CUTTER BLADE	1	
29	V22P-02807	COUNTERSUNK SCREW	2	
30	VMX35ER-02906	SHIM	4	
31	VMX35ER-02907	CUTTER BLADE	4	
32	VMX35ER-02908	CUTTER BLADE	1	
33	VMX35ER-02909	CUTTER BLADE	4	
34	VMX35ER-02910	CUTTER BLADE	4	
35	VMX35ER-02911	SHIM	2	



FURUKAWA ROCK DRILL EUROPE B.V.

Proostwetering 29

3543 AB Utrecht, The Netherlands

Tel.: +31-(0)30-2475160 Fax: +31-(0)30-2412305

Book No. : VMX35ER-K101E
Date of Issue : April 2021